



ELHAM NEWSLETTER

FREE to you, paid for
by Elham Village Hall
advertisers.

JANUARY 2026



Published by the Elham Village Hall Association, Charity No 1024757

Also available on the EVHA website, www.elhamvillagehall.co.uk.

Events and News available to read on Facebook, Elham Village Hall, and on
www.visitelham.co.uk.



What's On, In and Around ELHAM

Date	Event	Time	Location	Contact	Page
Tuesday 6/13/20/27 Jan	Elham Community Shed Coffee Morning	10.30 - 12.00	The Shed, Elham Village Hall	elhamshed@gmail.com	22
Wednesday 7 Jan	Social Snacks and Cinema	19.00 for 19.30	Peggy Pike Room Elham Village Hall	Jan Stanyon 01303 840820	5

Published by EVHA elhamnews1tter@gmail.com . Printed by The Sustainable Printworks.CT2 8ER hello@thesustainableprintworks.co.uk2

What's On, In and Around ELHAM

Date	Event	Time	Location	Contact	Page
Saturday 10 January	Elham Community Shed 1st Anniversary Party	19.00	Peggy Pike Room Elham Village Hall	See poster	22
Thursday 15 January	Ballroom and Latin Dancing Classes start	19.30	Etchingham Village Hall	Lyn 077924 79973	14
Thursday 15 Jan	Elham Gardening Society Pollinator Friendly Gardening	19.30	Peggy Pike Room EVH	See website	15
Thursday 15 / 22 / 29 Jan	Elham Community Shed	10.00 - 16.00	The Shed, Elham Village Hall	elhamshed@gmail.com	22
Saturday 17/24 /31 Jan	Elham Community Shed	10.00 - 12.00	The Shed, Elham Village Hall	elhamshed@gmail.com	22
Sunday 18 January	Elham Valley Walkers	10.00	Folkestone Harbour	Andy Cornford 07761 034407	18
Thursday 22 January	EVHA Annual General Meeting	19.30 for 20.00	Elham Village Hall	n/a	5 /40
Saturday 24 January	EVHA Volunteers' Day	10.00-15.00	Elham Village Hall	See blurb	6
Friday 13 February	Wellbeing Group Music for MInd	19.00	Elham Village Hall	See poster	6 / 20
Friday 20 February	Barn Dance	19.30	Elham Village Hall	See poster	14
Friday 27 February	Elham Historical Society	19.00 for 19.30	Elham Village Hall	See poster	15

Welcome to the Elham Newsletter - January 2026

There has not been a January Newsletter since who knows when. Written records exist describing the first mention of a newsletter in the Elham Village Hall minutes of 23rd February 1965. In 1970 there was a regular monthly expenditure of £5.16.6d to pay for printing and in 1973 it was decided that advertising would become a regular feature in the monthly news sheet, a charge of 5p per advert was to be made. Twenty years later there was a team of volunteers who produced the Newsletter: Anna Clayton, Andree Sladden, Heather Loader, Leslie Lainson, Jill Perkins and Dick Hatfield. How times change!

For the past six years there has been me, the editor, and the cost of printing is over £7000 a year! The newsletter has never run at a loss and has grown in number, size and content. All our current commercial advertisers have now paid for their adverts and the Parish Council have kindly given a contribution of £600 towards their regular 4 plus pages of content each month. We are grateful to all our advertisers as their support enables us to offer free space in the newsletter for all local groups and organisations to advertise and report their recent events. e.g. Elham Gardening Society, Elham Historical Society, Elham Primary School, the church, etc. Elham Village Hall Association is not a business, it is a charity and this newsletter is produced to provide an informative, interesting, accurate, entertaining read for our community by volunteers within our community. Elham is truly enriched by the volunteers who live here.

The picture on the front cover was taken recently at dawn by Jim Clements... he felt a dawn picture was appropriate at the dawn of 2026.

If you know of an event or activity in February 2026 please send details before January 13 to me at elhamnewsletter@gmail.com. A happy and healthy New Year to all our readers and especially to all those who contribute to the production, cost and delivery of this Newsletter!

Renee Bull Editor



Contents

Pages 2 / 3	Who's who and what's where / EVHA BACS details / Editor's note / what's on in Elham / Contents
Pages 4 / 5 / 6	Elham Village Hall Association News / Social Snacks and Cinema / AGM Agenda/ Volunteers 'Day / Play for Elham
Pages 7 / 8 -12	KCC report / Parish Council Minutes for November and December.
Pages 13 / 14 /15	Know Your Neighbour / Local events / Village Forum / Elham Gardening Society
Pages 16/17 / 18	Church Pages / Sporting Activities
Page 19	Light Up Elham / Rev Wonderings
Pages 20 /21 /22	Friendship Lunch / Elham Christmas Food and Craft Festival / Community Shed
Pages 23 / 24	Elham Primary School / Age UK / January Wordsearch
Pages 25 - 39	Looking After You and Your Family's Wellbeing / Looking After Your Home and Your Garden / Elham Services
Page 40	EVH Event Posters

Elham Village Hall Association

Annual General Meeting

Thursday 22 January

7.30 for 8.00 at the Village Hall

Free drinks and nibbles

All welcome.

Put the date in your diary!

Come and find out what we do. Agenda on page 5.

Maggie Tappenden.



Maggie has been the bookings co-ordinator at Elham Village Hall for the past 11 years. She retired at the end of December 2025. During that time, she also acted as our cleaner, hall ambassador, wedding coordinator and much, much more. At her final committee meeting on 15th December, she was presented with flowers, fizz and theatre tickets as a token of our appreciation for all her hard work over the years. She will be sorely missed.

How do you replace someone who is irreplaceable? Find another Maggie....

In the last few months Maggie has been training our new bookings co-ordinator, Olga Bychuk, who will take over in the new year.

There is a saying: 'No one notices what I do until I don't do it'. That is our fear for the next few weeks but we are sure that Olga will soon be confident in her new role.

On behalf of the Elham Village Hall committee, we would like to wish Maggie a very happy retirement and welcome Olga into the village hall team.

The bookings telephone number will remain unchanged, but our booking email will change to booking@elhamvillagehall.co.uk so please update your records.



The perfect venue for every occasion

ELHAM VILLAGE HALL



Situated in the beautiful Elham Valley, our modern village hall offers convenient and flexible facilities. Ideal for small or large occasions, happy or sad, from business meetings to christenings, wakes, birthday parties and weddings.

Approved by Kent County Council as a venue for the solemnisation of civil marriages and the formation of civil partnerships.

Take a look at our website: www.elhamvillagehall.co.uk

Contact **Olga Bychuk** mob 0774 6790 618 for further information.

booking@elhamvillagehall.co.uk
All hiring at competitive rates



SOCIAL, SNACKS AND CINEMA

Wednesday 7th January 2026. 7 for 7.30pm

You are cordially invited to the first SSC of 2026 and it's a free entry event!

Come along to the Peggy Pike Room at Elham Village Hall and enjoy some social interaction with others. The **B**ar will be **O**pen from 7pm. Jan Stanyon, Chair.

Due to the terms of our licence, we are unable to print the name of the film but we hope **Y**ou will be able to de-
te**C**t w**H**at it is. Our SSC events take place **O**n the f**I**rst Wednesday of each month. We do hope to see you.

ELHAM VILLAGE HALL ASSOCIATION LTD

NOTIFICATION OF AGM

The Elham Village Hall Association Ltd will be holding their AGM on Thursday 22nd January 2026 in the Peggy Pike Room at Elham Village Hall. The bar will be open at 7.30 for an 8pm meeting. All drinks and refreshments will be free. There will be copies of our accounts and the President and Treasurer's reports available for your perusal both prior to the meeting and at the meeting as well as committee members on hand to answer any questions.

If you would like to view the accounts prior to the AGM or have any questions regarding the Village Hall please contact the Village Hall President Jan Stanyon: [07771 922120/stanyonjan@aol.com](mailto:07771922120/stanyonjan@aol.com).

The agenda is as follows:

- 1. Apologies for absence**
- 2. Minutes of the Annual General Meeting held on 23rd January 2025**
- 3. Matters arising**
- 4. The President's Report**
- 5. Treasurer's Report**
- 6. Elham Community Shed**
- 7. Appointment of Independent Examiner of Accounts**
- 8. Election of Members of the Council**
- 9. Hall Activities 2024**
- 10. Any Other Business**

MANY HANDS MAKE ELHAM VILLAGE HALL WORK BETTER.....

On you are invited to the **Volunteers Day** at the Village Hall on

Saturday 24 January 10.00 – 14.00.

Many different jobs need to be done in order that your village hall stays the attractive facility that it is. Please join us for all or part of the day. Coffee, cake and lunch is provided. Whatever your skills, your contribution of time will be most welcome. Just turn up at the hall... dress strictly 'working gear'.

Elham Village Hall Committee



Register Charity: 1129105

To refresh everyone's memories, Play for Elham, is a registered charity, founded in 2008, and is responsible for providing and maintaining the KGV playfield and The Gore.

In the past, we've been self-sufficient by renting the Pavilion to Badgers Bridge Pre-school during term time though this is no longer the case as the facilities at the Pavilion are no longer fit for purpose as advised by Ofsted and so that source of income ceased as of January 2024.

Those funds raised have allowed us to continue to maintain the King George V play park to a high standard for the children of this village and surrounding villages. This year following our annual ROSPA report we revamped the existing play equipment to ensure we comply with the necessary Health & Safety standards for playground equipment. Much of the equipment is now over 15 years old and so the repair and replacement costs to existing equipment came to almost £4k and plans are in place to provide a new piece of equipment in 2026. Our charity has been prudent over the last 3 years and ring-fenced funds to allow for these repairs along with insurance costs and general maintenance.

Play for Elham, whilst supported by Elham Parish Council is expected to be an independent fund-raiser, and so we will be looking at improving our revenue stream and fundraising. The Gore continues to be the home of Elham Valley Football Club, established in 2022 and the Pavillon & adjoining containers are in the process of being refurbished, which will allow us to once more to rent the facilities, with this in mind we have also made a contribution towards this refurbishment.

We are still partnering the Environmental group in the KGV with the flourishing herb garden providing fresh herbs to one and all, along with a wildflower area. The KGV is also home to the Jubilee tree which was planted there as part of the Queen's Green canopy.

We are looking forward to being more proactive at the KGV in 2026 and giving the young community of Elham a play park to be proud of, along with more sporting activities at The Gore

Music for Mind

Elham Parish Council in conjunction with Mind invite you to an evening of delicious bites and soulful beats from local musicians all in support of Mind

When and where?

Friday 13th February 2026

Elham Village Hall 7pm

Tickets £15 include lite bites
Bar available



Tickets will be available from January at selected locations

WATCH THIS SPACE |

mind.org.uk

Registered Charity No. 210830



Report from Chris Hespe, Kent County Councillor for Elham Valley

12 December 2025



Kent and Medway Local Nature Recovery Strategy Launched

DEFRA appointed KCC to lead in the production and management of the Strategy in 2023. The Strategy has been launched and sets out priorities for nature recovery and, through an interactive mapping portal, identifies actions and locations where the greatest contribution can be made. It is designed to help any organisation or individual take forward nature recovery in their area by providing the information and advice needed. Key priorities include tree planting to enhance air quality and protecting Kent's coastline with measures such as seagrass restoration, which has created habitats for seahorses and wintering Brent Geese.

Committee Restructuring

In order to reduce bureaucracy, duplication and costs, KCC is reducing its number of committees. The administration believes there are too many meetings, taking valuable time of Members and Officers. The changes to the committees will improve efficiency and make financial savings, whilst ensuring compliance with statutory requirements. Further savings from committees will be found in forthcoming months as efforts to reduce bureaucracy continue.

Spatial Planning

In the government's English Devolution White Paper of December 2024, it set out the intention to introduce a new duty for all areas, regardless of the pace of devolution or local government reorganisation, to prepare a Spatial Development Strategy. This would transform the delivery of housing and economic growth, coordinating with the necessary infrastructure provision relating to transport, energy and water. From Spring 2026, the preparation of a Kent and Medway Spatial Development Strategy will be led by a new Strategic Planning Board. This will provide the strategic planning framework that has been missing in Kent since the demise of County Structure Plans in 2011, enabling development prioritisation and investment in the County.

Playground Festival

A new festival designed to encourage play, imagination and creativity is launching in Kent in 2026, taking place between 22 and 31 May. The Playground Festival has been created for babies, young children and their families, involving immersive installations, workshops and playground sessions at 20 venues. There will be 150 events showcasing some of the most inspiring national and international work created for young audiences. Tickets can be booked via playgroundkent.co.uk/playground-festival.

New Highways Contract

KCC has signed a new long-term contract with Ringway to maintain and improve Kent's roads, worth £50 million.

The new contract will mean that residents will benefit from faster, more efficient repairs and maintenance, including potholes and drainage issues. The contract covers gritting, maintaining bridges and responding to emergencies. A key benefit of the new contract is that value for money for Kent taxpayers is sought, as the contract is designed to ensure efficiency, be transparent and provide visible results that Kent residents will see.

Moving Traffic Offences

KCC is inviting residents, businesses and road users to share their views on proposals to enforce moving traffic offences at certain key locations across the County. Yellow box junctions will be enforced via camera at one location in each of Ashford, Canterbury and Dover, in addition to a number in Maidstone. Comments should be sent to www.kent.gov.uk/mteconsultations

Finally, I would like to wish all residents of Elham Valley a peaceful Christmas and a wonderful New Year.

Christopher Hespe Kent County Councillor for Elham Valley

Full minutes can be seen on the Parish Council website and on the notice board by the Rose and Crown bus stop. Editor



ELHAM PARISH COUNCIL
cgreenwood@elhampc.co.uk



Your Parish Council



Kevin Lamb
Chair of PC
01303 840215



Christeen Chapman
Deputy Chair of PC,
Planning lead
07973765056



Geoff Clements
Tree warden
01303 840255



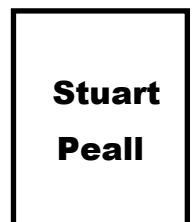
Brian Swan
Member of PC
01303 840006



Kevin Allen
Member of PC
Highways lead
01303 862087



Chris Francis
Member of PC
01303 840502



Member of PC
07956110887

Unratified Minutes of the Ordinary meeting of the Parish Council 3rd November 2025

Those Present: Councillors: K Lamb (Chair), C Chapman (Vice Chair) B Swan, G Clements, C Francis, the Clerk, and 18 members of the public. Apologies: K Allen and S Peall – apologies received and accepted.

To declare any disclosable pecuniary interests (DPI), other significant Interests (SI's) or a voluntary interest (VI) relating to items on the agenda. Cllr Francis declared an interest in agenda item 219.25 –25/1813/FH - 4-6 High Street planning application.

The meeting was adjourned for the public contribution.

The meeting reconvened.

Minutes of meeting.

The minutes of the Ordinary meeting of the Parish Council held on 6th October 2025 were approved and were signed as a true record by the Chair of meeting.

The minutes of the Ordinary (Budget) meeting of the Parish Council held on 20th October 2025 were approved and were signed as a true record by the Chair of the meeting.

Chairmans Report – We are in need of Volunteers to assist with the road closures for Remembrance Sunday. MOP volunteered and it was advised that the Clerk would email all relevant information.

Finance

The Accounts from October 2025 were agreed as true record and were signed by the Chairman of the meeting.

The Bank Reconciliation from October 2025 was agreed as true record and was signed by the Chairman of the meeting.

The following grant applications were considered and agreed:

EVHA - £230.00 towards the Christmas lights and The Friendship Lunch - £135.90 towards their Public Liability Insurance.

The virement of £25707.00 from ringfenced Churchyard to Churchyard budget provision was agreed.

The October 25 invoices were agreed and payments were approved.

Planning

1. Applications received were noted and comments agreed:

Planning Application	Address	Description	Comments / Views
25/1815/FH	2 Fairfield, Elham, Canterbury, Kent CT4 6UT	Variation of Condition 2 of planning permission 22/1324/FH to allow for the alignment of new retaining wall to be modified to increase patio area.	No Objection
25/1813/FH	4-6 High Street, Elham, Canterbury, Kent CT4 6TD	Variation of condition 3 (opening times) of planning permission Y09/0511/SH to vary hours of operation.	There were a large number of residents present both for and against the application. Two district councillors were present, Stephen Scoffham & James Butcher. Cllr Scoffham advised that at present none of the three District Councillors were minded to call in the application and that once they had heard the PC recommendations, they would be happy to leave to planning officers under delegated powers. ...cont

Planning Application	Address	Description	Comments / Views
			<p>A very detailed discussion was had. The applicant outlined the pressing need to extend hours, particularly with Sunday opening to ensure the viability of the business.</p> <p>The need for compromise and working together was emphasised and this was agreed by all parties. An area of concern was that if opening hours were extended it could lead to extensive preparation and housekeeping being carried out beyond these hours. It was accepted that there is always a need for preparation and then cleaning up both before and after opening.</p> <p>In a spirit of cooperation and to minimise the impact on surrounding domestic properties the applicant stated that they would endeavour to limit these preparation times as far as is practicable, given the needs of the business.</p> <p>The parish council, after discussion with the applicants and other interested parties including residents of the same building put forward the following hours : Monday to Friday - 8am -5pm - during winter hours (when British Summer time ends) Monday to Friday - 8am - 6pm - during British Summer time Saturday 9am - 5pm Sunday and Bank holiday Mondays - 10am - 4pm</p> <p>Both the applicant and the residents were agreeable with this compromise and were happy that this would be the basis for the parish council submission to FHDC.</p>
25/1861/FH	6 Lime Villas, High Street, Elham, Canterbury, Kent CT4 6TA	Erection of a carport to the rear and installation of a roof line window within the rear roof slope of the main house.	No Objection
25/1896/FH	Beldene, Park Lane, Elham CT4 6UU	Single storey rear extension and replacement flat roof over rear additions.	No Objection
25/1955/FH/TCA	1 New Inn Cottages, High Street, Elham CT4 6TD	Works to trees in a Conservation Area T1 Acer Pseudoplatanus (Sycamore) crown reduce by the selective removal of 3.5 - 4 metres from the branch tips, radial spread to be reduced from 7m to 5m and height from 16m to 12m.	No Objection
25/1950/FH/TCA	The Old House, High Street, Elham CT4 6TB	Works to trees in a conservation area G1 4 x Lime's 1 x Sycamore re-pollard to previous points, reducing height of trees by approx 4metres. T1 Sycamore re-pollard to previous point reducing height of trees by approx 4 metres.	No Objection

2. No Applications have been received since the agenda was published.
3. The following decisions were received from Folkestone and Hythe District Council:

Planning Application	Address	Description	Decision Received
25/1495/FH	Old Mount Farm, Mount Hill, Rhodes Minnis, Canterbury, Kent CT4 6YD	Detached dwelling house following demolition of redundant farmhouse	Refused
25/1325/FH	Mayfield, Cherry Gardens, Elham, CT4 6SZ	Works to trees the subject of TPO No. 16 of 1994 1 Sycamore pollard to previous point approx. 6 metres from ground level	Approved with conditions

The Gore – It was agreed to defer this agenda item until a future Ordinary meeting.

Churchwall – Planning condition 25/1736/FH/CON has now received approval. The Clerk is arranging pre-start meetings with the contractor and the residents with the aim of starting the works week commencing 17th November 2025.

Twinning – Elham Primary School have a delegation from Ambleteuse school visiting in November. They have requested a contribution towards their catering cost of £50.00, this was agreed.

Play for Elham – The ROSPA report has highlighted works required to trees and bushes in the King George V. It was agreed to accept the quotation of £680.00 for the works required in the ROSPA report.

Newsletter– Request for funding:

It was reported by the Editor of the Newsletter that the newsletter was running at a loss. The annual printing cost is approximately £7,000 and the income to date is approximately £5,888.

The Editor explained that she was having trouble collecting money from some of the commercial advertisers. Cllr Swan enquired as to why the Village Hall announcements also occupy all of the full colour space that is usually premium advertising space, while there were local businesses that had been turned down from buying these spots? The Council noted that whilst the newsletter is a valuable asset for the village it will be difficult to justify use of precept funds to subsidise commercial entities appearing in the newsletter for free. The Council agreed to help towards the shortfall through a monthly contribution of £55. This agreement was made on the understanding that the advertising strategy, including the problem of non-payment by businesses would be actively addressed by the newsletter with some urgency and that the Councils contribution will be reviewed in November 2026.

Remembrance Sunday – The Road Closure Notice has been received and is now in place. The Village Hall has confirmed that their PA system may be used for both the school service on the preceding Friday and the Remembrance Sunday service. Cllr Swan will act as Lead Marshal and will meet the volunteers in the Square on 9th November.

Correspondence - The receipt of correspondence was noted, and any required actions agreed. Please see full Minutes on Elham Parish Council website for full correspondence list.

Date of next meeting and Close - The next meeting will be the Ordinary meeting of the Parish Council on Monday 1st December 2025 at 7.30pm. There being no further business the meeting closed at 9.21pm.



Unratified Minutes of the Ordinary meeting of the Parish Council 1st December 2025

Those Present: Councillors: K Lamb (Chair), C Chapman (Vice Chair) B Swan, G Clements, S Peall, the Clerk, and 2 members of the public. Apologies: K Allen and C Francis – apologies received and accepted.

Minutes of meeting-As the Clerk was absent due to illness in November, approval of the minutes from the Ordinary Parish Council meeting of 3rd November 2025 was deferred to the Ordinary meeting in January.

Chairmans Report – The Chairman explained to the meeting that Parish Council meetings are not public meetings, they are a meeting for the Parish Council to conduct official council business and to make decisions. The public are allowed to attend but only to observe and listen to proceedings, the public have no legal right to speak unless they are
...cont

specifically asked by the Chair or other Parish Councillors to do so. People who take the time to come regularly to a meeting know that they're very frequently given the opportunity to discuss items on the agenda and other subjects they may want to air, it would be shame if this opportunity was lost or curtailed.

Generally we allocate 15 minutes at the beginning of each meeting to allow members of the public to speak, we have a very busy agenda this evening and therefore no time for public contribution, if there is something you wish to say that cannot wait until the Ordinary meeting in January please put it in writing to the Clerk for the Councillors consideration.

The Kings Arms and Elham Valley Football Club have organised a charity football match on the 28th December, between Elham Valley Football Club and Elham All Stars. The Kings Arms will be serving refreshments pitch side. There will be a raffle along with an auction of sporting memorabilia at the Kings Arms afterwards. All proceeds are going to the Pilgrims Hospice.

Finance

- 1)The Accounts from November 2025 were agreed as true record and were signed by the Chairman of the meeting.
- 2)The Bank Reconciliation from November 2025 was agreed as true record and was signed by the Chairman of the meeting.
- 3)The draft budget, with amendments discussed at the Ordinary meeting 20th October, was approved in principle; it was agreed to defer signing off the 2026/27 budget until the Ordinary meeting in January.
- 4)The precept was approved in principle; it was agreed that signing off the precept request would be deferred until the Ordinary meeting in January once the Tax Base information was received from FHDC. It was noted that the precept request must be received by FHDC no later than 9th January 26.
- 5)The November 25 invoices were agreed, and payments were approved.

Planning

1. Applications received were noted and comments agreed:

Planning Application	Address	Description	Comments / Views
25/2071/FH	Vale View, High Street, Elham CT4 6SX	Works to tree in a conservation area comprising of T1 Yew reduction of 1.5 metres in all directions.	No Objection.
25/2097/FH	1 Hunters Bank, Old Road, Elham CT4 6SS	Works to a tree subject to TPO 25 of 1996 comprising of T1 Sycamore, pollard 6 - 8 metres from ground level.	No Objection,

2. No Applications have been received since the agenda was published.

3. The following decisions were received from Folkestone and Hythe District Council:

Planning Application	Address	Description	Decision Received
25/1950/FH/TCA	The Old House, High Street, Elham CT4 6TB	Works to trees in a conservation area G1 4 x Lime's 1 x Sycamore re-pollard to previous points, reducing height of trees by approx 4 metres. T1 Sycamore re-pollard to previous point reducing height of trees by approx 4 metres.	No objections.
25/1813/FH	4-6 High Street, Elham, Canterbury, Kent CT4 6TD	Variation of condition 3 (opening times) of planning permission Y09/0511/SH to vary hours of operation.	Approved with conditions.
25/1896/FH	Beldene, Park Lane, Elham CT4 6UU	Single storey rear extension and replacement flat roof over rear additions.	Approved with conditions.
25/1955/FH/TCA	1 New Inn Cottages, High Street, Elham	Works to trees in a Conservation Area T1 Acer Pseudoplatanus (Sycamore) crown reduce by the selective removal of 3.5 - 4 metres from the branch tips, radial spread to be reduced from 7m to 5m and height from 16m to 12m.	No Objections.

The Gore – A group of local people, including local building firms, The Kings Arms, together with members of Elham Valley Football Club, intend to commence refurbishment of the containers, including the cladding to the exterior, very shortly.

Members of the football team and two members of the parish are keen to start football for young people. The chair has mentioned this to Mr Magliocco, the newly appointed Headteacher of Elham Primary School, and he has expressed a strong interest in the school becoming involved with football at the Gore.

Churchwall – Works to the section of wall have commenced. During the cleaning of the flints, it has become apparent that various sections were repaired previously using inappropriate mortar, and as a result a lot of the flints cannot now be salvaged and are unusable. The contractor has been asked to submit a quotation for the purchase of replacement flints, which will be considered upon receipt. When the Diocese granted the faculty, it was agreed that the disturbed soil from the excavations would be laid in the churchyard. It was agreed that the Clerk will contact Rev Carol to confirm where the builders will be placing the soil.

The planning application for the buttresses has been submitted. It was agreed that the Clerk will revisit the tenders for the rolling maintenance programme, with the intention of commencing works in early spring.

LOCAL NEWS

Note: Elham Historical Society - To the side of the Church there was formerly a memorial for a Flying Corps member who had lived in the Parish prior to the First World War. He was killed in action in France in 1916 and buried in a mass cemetery. After the war, his parents travelled to France to retrieve the roundel cross marking his grave site and this was subsequently erected in St Mary's Churchyard. Due to deterioration over the years, the memorial was moved inside the Church. The Historical Society has asked whether the Council would be willing to help financially towards the refurbishment of the memorial and its installation as a permanent feature within the Church. The Historical Society has been asked that once they have agreed the location and design with the Church, they put a proposal together for the Council to consider.

Play for Elham – It was agreed in principle that Play for Elham may replace a piece of equipment in the King George V play park. Play for Elham will liaise with the Council regarding which item they would like to replace and the proposed alternative.

It was noted that Play for Elham considered it appropriate to contribute towards the refurbishment of the pavilion/containers, given that the main tranche of their income had been generated from the rental of the facilities at the Gore.

Remembrance Day – The Council extends its thanks to Harmers for preparing the surrounding area of the War Memorial; to the anonymous donor of the Tommy statues; to Toby Dingle for leading the procession on horseback; to Rev. Dougal for conducting the service; to the volunteers who assisted with the road closures; and to Doug Martin and Gerry Newman for stepping in to operate the PA system. The Remembrance Service was well attended this year.

Jan Stanyon from EVHA has kindly spoken to the Chair regarding her assistance with applying for National Lottery grant available for War Memorials. The Chair has spoken to the R.B.L to ask for their input to the possible works to the platform. With this in mind, the surface and kerbs around the War Memorial have been reviewed, and quotations are currently being obtained to remove the existing broken concrete, level the area, and replace it with sandstone slabs that will be more in keeping with the Memorial itself. A planning application will need to be submitted once scope of works is agreed.

Meeting Calendar – The proposed calendar of meetings was considered and agreed.

Correspondence - The receipt of correspondence was noted, and any required actions agreed. Please see full Minutes on Elham Parish Council website for full correspondence list.

Date of next meeting and Close - The next meeting will be the Ordinary meeting of the Parish Council on Monday 5th January 2025 at 7.30pm. There being no further business the meeting closed at 9.04pm.



This scanned copy of a sketch was sent by Dr Stephen Scoffham, District Councillor. The sketch comes from 'Highways and Byeways in Kent' by Walter Jerrold with illustrations by Hugh Thomson (Macmillan 1908).

KNOW YOUR NEIGHBOUR

PAUL WILKIN is better known as Wilco Plumbing, the man who has been into many houses in the village, sorting out their plumbing. He agreed to feature as the neighbour we can get to know this month.



How long have you been part of the Elham Community?	Linda and I moved here in 2002 from South London, the best move we ever made. We had been in Catford for 25 years and we were looking for a better quality of life. When in the area we sat in front of the fire at the Rose and Crown and decided Elham was the place.
What do you consider your greatest achievement to date?	My greatest achievement is 52 years of marriage to Linda. We met in Rugby when I was on leave from the Royal Navy and it was love at first sight. We courted via letters and occasional visits and married in 1973.
When were you happiest?	I know I am happy now because Linda told me so. I am reminded that I was happy when our two children, Mark and Claire were born. I am always happy when I am out at sea.
What did you want to be when you were growing up?	I always wanted to be in the Royal Navy because my dad had served during the war. I had joined the sea cadets and then the Navy at 15 and served for 9 years.
What keeps you awake at night?	I am not a worrier, but I have a lot of pain with M.S. Multiple Sclerosis is a neurological illness and each day is different, you never know your a... from your elbow one day to the next. I was diagnosed 10 years ago and did manage to carry on working for a while.
What is the most important lesson life has taught you?	When the going gets tough the tough get going. I have always been tough being brought up on a London council estate.
Which village event do you most look forward to?	We like the markets in The Square. It is such a social event and you always get to chat to people.
Tell us three activities that keep you busy?	-I can no longer dive, but I skipper a dive boat out at Dover -I enjoy researching shipwrecks, I have done a talk for the Historical Society about the wreck of the Josephine Willis which is now listed by Historic England. I was part of the team that found her. -Doing small jobs around the house
What one change in the village would improve your life?	For the last three years I would have said getting the streetlight repaired at the Ottinge crossroads, but that is now fixed following the visit of 7 men and 5 vehicles two weeks ago, So now a speed reduction between Lyminge and Elham would be good.
Cat, dog or goldfish?	We do a lot of doggy day care for our daughter's dog, Gilbert. He is my best mate. He understands every word I say, We tried being dog owners when we moved here, but we chose the wrong dog, too clever for us so we gave him to friends who have 4 other dogs and he was trained as a gun dog.
What is the worst job you have ever done?	When I was in the Royal Navy as part of the firefighting team we boarded a Spanish tanker in the Mediterranean which had a fire in the engine room. The heat was so intense, it melted my nylon socks in my boots and I was reprimanded for not wearing regulation woollen socks. But we did put the fire out after many hours.
Tell us a joke.	After years in the Navy and on building sites, the jokes I know are not for publication.
What would the people of Elham not know about you?	I have run 5 London marathons, I have done four 'Tough Guys' (google it), and numerous half marathons and cycled London to Brighton 3 times. I climbed Kili-manjaro and trekked across Costa Rica raising funds for Macmillan Cancer Relief.
Last thoughts, final word.	From Rudyard Kipling's If : If you can fill the unforgiving minute with sixty seconds' worth of distance run, yours is the Earth and everything in it.

Editor



Barn Dance

Friday 20th February 2026
at 7.30pm

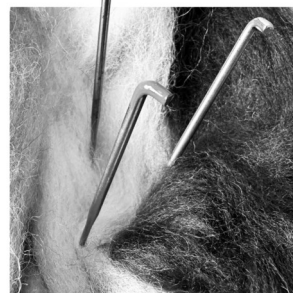
In Aid Of Pat and Geoff's Grandson, Callum's
Trip to Tanzania with Camps International

- Raffle on the night! £1 a strip
- Live Music with
Abbey Capers Barn Dance Band
- Tickets Available from
Pat and Geoff Webb
07792479973
Email patgeoffelham@gmail.com

**Bring your own
food and drink**

TICKETS: £10 each
Elham Village Hall, High St. Elham,
CT4 6SX

Needle felting for Beginners



Are you interested in a introductory needle felt session in Elham?

If you think this is something you may be interested in
please email me your contact details

Pip Hope - artist

enquiries hairyfairyland@gmail.com



BALLROOM & LATIN DANCING

Cha Cha Cha ~Waltz ~ Jive ~ Quickstep ~ Rumba ~ Foxtrot
and more

Etchinghill Village Hall

Join us from 15 January 2026

Beginner Class
Thursdays 7.30 - 8.30pm

Improver Class
Thursdays 8.30 - 9.30 pm

£7 per person per hour

Bring your two left feet and your sense of humour.
Get FIT, get HEALTHY, have FUN & get DANCING.
Partners not necessary

To join any of the classes
and for further details, or information about private lessons

please contact Lynn on 07967979610
lynn.chapman0127@btinternet.com
IDTA (AB), (AL), (SalDip)

'Isms'

Most isms are either unlawful or not to be used (eg age-ism, sex-ism, race-ism etc).

However, there is one which is alive and well-snob-ism.

This is clearly illustrated by the case of Michelle Mone. The media has crucified her for apparently making £29m from a covid PPE contract.

Mone has a working-class background and used to parade around in a bra being sold by her company.

Compare this with a company given a £252m PPE contract. The company's owner made £20.2m out of that company's profits (paid to him via a tax efficient (for him) offshore company. A 'middle man' picked up £32.4m commission. A third was paid £11.6m again via a tax efficient offshore company. These three are respectable city-types, 'chaps', the right sort of people. Compare Mone's £29m with the above total of £64.2m. Is it time the we rose up against snob-ism?

Keith Mortimer'

ELHAM VALLEY STORES

**We are looking for more volunteers to work, on
an occasional basis, in the Village Store.**

Full training will be given.

**Please contact Martin Turner (01303 840804
or jgt867@aol.com)**

if you would be interested have any questions.



Presents

“The Changing Face of Elham Talk 6”

In this talk we will continue our journey around the parish-taking in Ladwood, Standard Hill, Shuttlesfield and round to Lower Court at Ottinge.



There will also be a selection of historical items and maps for you to view from the EHS archives.

Refreshments available as usual from our pay bar.

Friday 27th February 2026

7.00 for 7.30p.m.

Entry for EHS Members £3 Non Members £5

Elham Village Hall

elhamhistorical@outlook.com

elhamhistorical.org



On behalf of the Royal British Legion

I wish to thank everyone who supported the 2025 Poppy Appeal.

Our district total so far is an amazing

£15,769.87

Thank you to everyone – house-to-house collectors, shops and businesses, Elham Village Hall Association, Elham CE Primary School, Elham Parish Council, St Mary’s Church and, most particularly, everyone who gave so generously.

Susan Foster, Poppy Appeal Organiser, Elham Valley District

Tel: 07734 383691

December again and so far, stormy and impressive in many ways but also wonderfully mild. Long may it last! It's a quiet time garden wise. - cutting back, bonfires and a lot of closing one's eyes to the surviving weeds.

The speaker at the meeting on 20th November, which was a combined Zoom and hall event, was Katherine the Tea Break Gardener who talked about what could be grown in the greenhouse. She showed an amazing collection of mainly tropical plants, needing different levels of heat. Many of the beautiful plants shown were very rare and unheard-of but very tempting. Surprisingly, she showed a most attractive ginger plant which can be grown outside in this country, with a bit of protection in winter. An informative and very enjoyable evening.

There will be a report on the A.G.M. and Christmas party in the January newsletter.

Our speaker at the meeting on 15th January will be Donna Truwhyte who will talk about Pollinator Friendly Gardening.

The last Newsletter entry of 2025 - a busy year. We do wish all our members and friends a very happy Christmas and a peaceful, healthy New Gardening Year.

Frances Horton. - 840550.



OTTINGE HAS BEEN IN THE DARK FOR THREE YEARS

Ottinge has been without our street lamp on the crossroads for almost three years. People have had to wait for the bus in the dark. A dangerous cross road has been unlit.

Finally this week a new one was fitted. Claire Greenwood clerk of the Parish Council has been chasing the various departments for the last 18 months, before that I did the same for 18 months

Paul Wilkin

Please visit our website for information about our churches, services & events www.elhamvalleygroupofchurches.co.uk

NOTICES for January



Every Tuesday at St. Mary's...

Traditional Morning Prayer at 8.30am in the Jesus Chapel. Download the free Church of England app or use the red book. A good way to begin the day. <https://play.google>.

Every Monday at the Methodist Hall ...

Coffee and cake, a warm welcome and friendship, 10.30am – 12pm



Churches Together in Elham Valley January

There are no meetings in January. They will resume in February. Please note the times may change. Contact : Ruth Collie (01303 840773)

4th January – 2nd Sunday of Christmas

08:00 Said Eucharist 09.30 Service of the Word

Lectionary readings:

Jeremiah 31.7-14; Psalm 147.13-21; Ephesians 1.3-14; John 1.[1-9]10-18

11th January – 1st Sunday of Epiphany

09.30 Service of the Word

Lectionary readings:

Isaiah 42.1-9 ; Psalm 29 ; Acts 10.34-43; Matthew 3.13-17

18th January – 2nd Sunday of Epiphany

09:30 Sung Eucharist

Lectionary readings:

Isaiah 49.1-7; Psalm 40.1-12; 1 Corinthians 1.1-9; John 1.29-42

25th January – 3rd Sunday of Epiphany

09:30 Service of the Word

Lectionary readings:

Isaiah 9.1-4; Psalm 27.1,4-12*; 1 Corinthians 1.10-18; Matthew 4.12-23

Events for the February Notice sheet Please send to Margaret Keeble by 5th of each preceding month. m.keeble@outlook.com

Elham Methodist Church

(all at 9.30am unless otherwise stated)

Services for JANUARY

4th Circuit Covenant Service at St Andrew's

11th Valley United Service at Lyminge 10.15am

18th Revd Gill Songer United Service with St Mary's at Methodist Church

25th Local Arrangement



Donations

We would greatly appreciate your help to continue our work for God in the village of Elham and surrounding areas. If you can, please consider making a donation. This is our QR code for St Mary's Elham. To donate using this code, open up the camera on a mobile phone - point the camera at the QR code – follow the instructions.

The offertory plate will go round in the service, during one of the hymns. There is also the opportunity to donate by card using the PAYAZ machine by the North door.

Safeguarding / 'A Safe Church':

If you ever have any concerns, contact our Parish Safeguarding Officer:

Susannah Pallot : susannahpallot@gmail.com

Paper Copies of Notices

Some copies are available on back table in church. Please take a copy to give to those unable to access the internet.



2025 was a successful year for the Friends of St Mary's. We completed the project to improve the western entrance to the church. That involved substantial refurbishment of the double doors to not only improve their appearance but also ensure that they are weatherproof. At the same time, we replaced the utilitarian railings on the steps leading to the doors with fine wrought iron handrails. These two schemes were funded by FoSM at a cost of £6500.

We also had the very successful fundraiser "Jazz and Strawberries on the Lawn" at the Old Vicarage. With tremendous support from the Kings Arms we raised nearly £3000. We were blessed with a glorious summer evening which at this time of year seems a long way away!

We have several new projects which we are exploring but are committed to two to start 2026. Having, several years ago, significantly improved the northern entrance to the church and churchyard and last year enhanced the western entrance, this year we are turning our attention to the south side. Work to repair and restore the gateway from Vicarage Lane will commence soon, subject to the approval of the Parish Council, and hopefully that will be followed by new lighting at the gate itself and along the path to the church.

We also will be repairing the small doorway in the southern wall of the chancel which has been unloved for many years.

We have plans to hold another major fundraising event later in the year. More details will be included in future News-letters.

We always welcome sponsors who make annual, occasional or one-off donations to FoSM. If these can be backed up by Gift Aid that represents a significant increase to our funds. If you would like to contribute to the continued improvement of St Mary's for the benefit of the whole community and to preserve the future of this historic landmark in the centre of our village please do contact our Treasurer, David Kincaid [davidkincaid@btinternet.com].

Thank you to everybody who supports FoSM financially and practically, and we wish everybody in Elham a peaceful and healthy new year.

TG

ST MARY THE VIRGIN ELHAM

URGENTLY NEEDED!

TOWER CAPTAIN

ESSENTIAL

- Must be competent and experienced Bell Ringer, confident in teaching others to ring church bells.

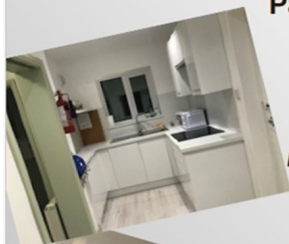
contact: iandodd8888@outlook.com




St Mary's Church Hall Elham



Hire St Mary's Church Hall for Meetings, Clubs, Functions and Parties



Morning and Afternoon sessions
£15 for hall
£10 for kitchen

Evenings (6-9pm) and Saturdays
£15 for hall
£10 for kitchen



All Day, including weekends
£45 for hall
£20 for kitchen

Bookings: Lynda Vincent
01303 840593

St Mary's Church Elham

Treasurer

Our beautiful church is looking for a new treasurer to take charge of the finances assisted by the deputy treasurer. Familiarity with Excel/Google Sheets will be needed. This role is voluntary.

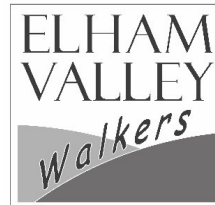
Treasurer's tasks

- Making payments, recording receipts, and agreeing bank statements.
- Liaising with the deputy treasurer who handles cash and banking.
- Managing the account signatories and regulatory compliance.
- Recording fees for weddings and funerals and reporting to the diocese.
- Recording gift aid on donations.
- Attending about five Parochial Church Council meetings and presenting a cash flow report.
- Prepare annual financial statements for approval of the PCC and submission to the Annual Parochial Church Meeting, ensuring they comply with current Charity Commission requirements.
- The annual financial statements need to be independently examined | each year and sent to the diocese.

If you can [help please contact Anthony](#) on 07742 142106

Elham Valley Walkers Autumn Programme

Please check <https://elhamvalleywalkers.co.uk/our-next-walk/> prior to joining a walk, for any last minute changes, or phone the walk leader if you are unable to access the internet.



Sunday 18th January. Walk starting at Folkestone harbour, meet 10am outside the old fish market adjacent to the Rocksalt restaurant. We walk towards Hythe, along the Leas into Saltwood then return via the promenade to the harbour. About 4 miles, an easy mud free walk, fresh air and plenty of coffee shops as well. Andy Cornford leads 07761034407.

ELHAM SPORTS CLUB

ESC offers Tennis, Pickleball and Badminton - new members always welcome – tennis and pickleball members can either book and play or join the friendly club sessions



Tennis -

Mondays - 7 pm

Contact: Clive Stanyon - 01303 840820 or stanyonc@aol.com

Tuesdays and Thursdays - 10 am

Fridays - 6 pm

Contact: Maureen Alexander - 07714 415651 or

maureentalexander@gmail.com



Pickleball - Indoor (spaces limited) and Outdoor Sessions –

Mondays - 3.30 pm and 6 pm (Indoor/Outdoor if weather allows)

Wednesdays - 3.30 pm (Indoor/Outdoor if weather allows)

Fridays - 9.30 am - Open Club Session (Outdoor if weather allows)

Contact: Abby Bourn - 07754 085866 or abby.bourn@hotmail.co.uk



Badminton - Indoor

Wednesdays - 6.30 pm

Contact: Clive Stanyon - 01303 840820 or stanyonc@aol.com

For more information visit our website: <https://clubspark.lta.org.uk/ElhamSportsClub>



Elham
Historical
Society

Interested in local Elham History?

Then come and join us at the

Elham Historical Society

for:

- Interesting local historical talks
- Trips & outings
- Social events

Contact us via email: elhamhistorical@outlook.com

Visit our website: <http://www.elhamhistorical.org>



Elham Valley Football club have continued their fine form into this month will another full month of fixtures with a 100% record. Elham are now top of the Ashford Premier Division with brilliant reading with 7 wins from 8 games. The last two league games were fantastic performances with wins over Lydd Town 7-1 and Smarden 3-2. Elham have also progressed to the next round of the Weald Of Kent Competition by knocking out higher level Charing 3-2. It's a big month of fixtures coming up which could play a pivotal part into the season's league positioning.

Anonymous

Any adults or youngsters for Table Tennis?

The table tennis sessions on Monday evenings in the Anna Clayton room have been going well - long may they continue. There is a session from 6:35 to 7:15 for children, in school Year 5, 6, 7 or 8 (adult accompanied) in the Anna Clayton room. Please contact me if you intend to come at 6.35.

The adult session continue starts again on Monday 12th January 2026 nights at 7.15 Elham Village Hall, upstairs as usual. Equipment provided; we just need your enthusiasm.

If you would like further details please contact Jim Clements 07850072108 or ajcjm1904@gmail.com.



Light Up Elham
and the
Christmas Singalong

December 7

A large happy crowd gathered at The Triangle on December 7 for the tree switch on despite the weather trying to put a dampener on proceedings! Father Christmas and his trusty elf then led everyone to the St Mary's Church where



mince pies and mulled wine awaited. We were entertained by Anthony Trinkwon on the organ and by the ukulele band led by Janice Cooper.

After the music, wine and pies the journey home was enhanced by the sight of so many trees lit up throughout the village.

Thank you to all those who worked so hard to make the proceedings seamless. Happy New Year Elham!



The Rector's wonderings

I wonder if you had any surprises last year.

The beginning of a New Year is often a time when we look over the past year, take stock and consider how we might make some improvement to our lives. New Year's resolutions become very popular.

For Christians it's a time for us to consider our gifts and talents, and what we can give to God and the church in terms of our service.

We are asked to think about our vocation (calling) like the magi, are you being called to something new?

There were a record number of baptisms in some benefice churches last year, including 3 adult baptisms - these were lovely surprises to all those concerned.

Encountering Jesus in the waters of our baptism, we are called to be children of God. It's something which doesn't leave us, no matter what happens to us in life.

You are never too old to come to Christ, please get in touch with your local church or priest if you want to explore your journey further. I would love to baptise even more adults this year!

Whether we would call ourselves Christians or not, the prayer of St Teresa of Avila (1515- 1582) reminds us of our calling;

*Christ has no body but yours,
No hands, no feet on earth but yours,
Yours are the eyes with which he looks
Compassion on this world,
Yours are the feet with which he walks to do good,
Yours are the hands, with which he blesses all the world.
Yours are the hands, yours are the feet,
Yours are the eyes, you are his body.
Christ has no body now but yours,
No hands, no feet on earth but yours,
Yours are the eyes with which he looks
compassion on this world.
Christ has no body now on earth but yours. Revd Carol*





School Children Entertain the Elham Friendship Lunch Club

The Kings Arms was the venue for the Elham Friendship Lunch Club Christmas celebration at the end of November.

More than 30 members attended in a joyful atmosphere, made all the more festive by the attendance of

the singing group from Elham Primary School. The children sang a selection of Christmas songs and were warmly applauded by the appreciative audience. They all looked forward to dipping into the box of chocolates given to them as a little thank you!

The organisers of the Elham Friendship Lunch Club will now get busy organising speakers for the meetings next year. The club meets on the first Thursday of the month at 12.30 in St Mary's Church Hall. Reminders are sent out, and it is always helpful to receive confirmation of attendance so that catering is not wasted. Home-made soup, cheese, bread, and cake are the regular fare.



ELHAM CHURCH OF ENGLAND PRIMARY SCHOOL



Music for Mind

Elham Parish Council in conjunction with Mind invite you to an evening of delicious bites and soulful beats from local musicians all in support of Mind

When and where?

Friday 13th February 2026

Elham Village Hall 7pm

Tickets £15 include lite bites
Bar available



Tickets will be available from January at selected locations

WATCH THIS SPACE

mind.org.uk

Registered Charity No. 210810





Christmas 2025 Food and Craft Festival

The weather was kind to us, and we had a packed square and church and a classic

"Elham occasion". Meanwhile Father Christmas was busy in his grotto! The raffle tent was also very active and as a result, and with once more a generous donation from the Park Lane Chestnutters, we will be able to give the Motor Neurone Disease Association more than £750.

Thank you to everybody who supported the Festival, whether selling or buying, and to all our wonderful volunteers without whom the market just would not happen.

Particular thanks must go to Elham Tea House, The Dog at Wingham, Big Jig Toys, and Soulmates Spirits who donated raffle prizes. We must also thank Will at the Kings Arms who funded and provided a booster for the Kings Arms Wi-Fi so that stalls on the northern side of the Square who are out of range of our own extension to the church Wi-Fi can now easily take card payments.

We look forward to the two 2026 Food and Craft Festivals which are on **Sunday 14 June** [alongside the Open Gardens] and **Sunday 13 December**. Put these dates in your new 2026 diaries!

Meanwhile we wish everyone a peaceful and healthy new year.

TG



ELHAM ENVIRONMENTAL GROUP

On our Elham Environment Group stall, we exhibited the products of our birdbox project aimed at creating habitat for birds in and around the village - bijou accommodation for garden birds, swifts and owls. Made during the Autumn at the community shed, we sold most of the boxes and orders were taken for more which we plan to make in the New Year.



WINTER ACTIVITY AT THE COMMUNITY SHED

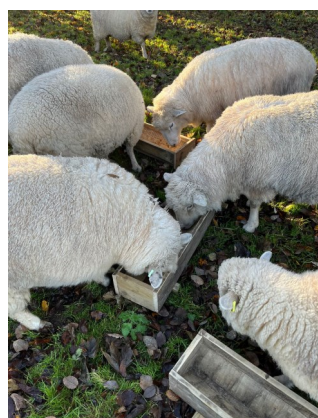
With the skill and ingenuity of John Tebbs, the members of the Elham Community Shed were able to enjoy a small but effective fire using the discarded expansion vessel from the heating system that had to be replaced.



Saturday morning sessions have been well attended. Candle making was very popular, with thanks to Roger and Julia Newman. Our pictures show the wreathmaking participants. We believe everyone one went home pleased and proud with what they had achieved.

You may have seen the bird boxes that have been made by members of the Environmental Group in Elham Community Shed. See their picture on the next page. There are plans for further workshop sessions including using the lathe so look out for information in the newsletter and on the Elham Community Shed Facebook page.

The picture below shows a shed member making feeders for her sheep, after hers were stolen from the field. The sheep seem to really appreciate her efforts!



Join us in the Elham Community SHED

**to celebrate our
1st anniversary
on Saturday 10 January**

**7.00pm in the Peggy Pike room
at the Village Hall. Come and meet the team,
renew your membership or join the Shed,
share ideas, meet new people.
There will be a paying bar. A very social event to
kick start the New Year.**

We look forward to meeting our existing members and any other interested folk at our anniversary social on January 10 at Elham Village Hall. It is the time to renew your membership for 2026, enjoy live music and socialise.

See you there!

The Shed Team

**ELHAM CHURCH OF ENGLAND
PRIMARY SCHOOL**

Most Wonderful Time of the Year

Hello everyone,



The first term of the school year is now over, and what a start it has been. There have been loads of changes at Elham CEP School this Autumn. We have welcomed new children and families, recruited some wonderful volunteers to run our revamped library, had Tolman Homes renovate our outdoor area, and started all new teaching approaches. It is only the beginning and we are so excited about the journey we are embarking on. If you, or someone you know, would like to visit and see what we are doing, please get in touch with the office. We have places across Key Stage 1 and Early Years. Christmas festivities have also been in full-swing. We attended the performance of Snow White at The Marlowe, and the children's behaviour was exceptional. Seeing us alongside other local schools made me even more proud to be leading Elham CEP School. The Christmas Fair, run by our wonderful and hard-working PTA, was a great success, with all money raised going back to the school. Key Stage 1 and Early Years teachers did a fabulous Nativity play, watched by our local Age UK group, and members of the Parish. Our final Christmas plans are for the Christingle ceremony at St. Mary's church on Friday December 19th. It really has been a magical month!

We would also like to champion some of our sporting prowess and success of recent times. Elham has always been a keen competitor in local school sports, and this has continued to be the case this term. Our team claimed victory in the Key Stage 1 Multisports event at Three Hills recently, and our Year 5 and 6 Basketball teams managed third place too. If sports and clubs are something you are looking for from a school, you need look no further.

Finally, an invitation to all local businesses, clubs and organisations to get in touch with us for the use of our school hall. We have already had some interest in using it, with discussions underway with two local businesses keen to run classes after school during the week. If this is something you would like to explore with us, please contact us via the school office or on email secretary@elham.kent.sch.uk We have competitive rates, a large space, and a central location in the village.

With warm wishes, Merry Christmas and a Happy New Year,

Mr Magliocco
Headteacher

The kindness of people...

People do kind things, unbeknown to others, quietly, without fuss, and so they never get any thanks.

Such people in Elham are a couple who, for the past 20 years, have looked after the piece of ground at the entrance to Fairfield. It's just an island of grass, with large planters. It always looks immaculate, mown regularly, planters filled.

No-one has asked them to do it. If not for them, it would probably be an added responsibility for the Parish Council.

So, to this couple, and to other kind people around the village who quietly get things done for the benefit of the whole community, this is a great big THANK YOU.

Anne Leva



***130 CLUB Winners
December DRAW***

1st Prize (£32) Number 37 KL Holmes

2nd Prize (£20) Number 115 Max Laker

3rd Prize (£13) Number 140 John Terry

please contact Martin Turner

01303 840804 /jgt867@aol.com

***Jackanory – read
a story***

Elham Primary School 's library is lacking a chair for a storyteller.

Do you have a chair that you no longer need that you could donate to the school? IT MUST HAVE A FIRE SAFETY LABEL to be used in a school.

Please contact elhamnewsletter@gmail.com to arrange collection.

Editor





**Singing
FOR ALL**

Funded by the National Lottery, everyone is welcome - no matter your experience!

FREE and booking is not required.
For further information call us on 01303 269602

DATES FOR YOUR DIARY

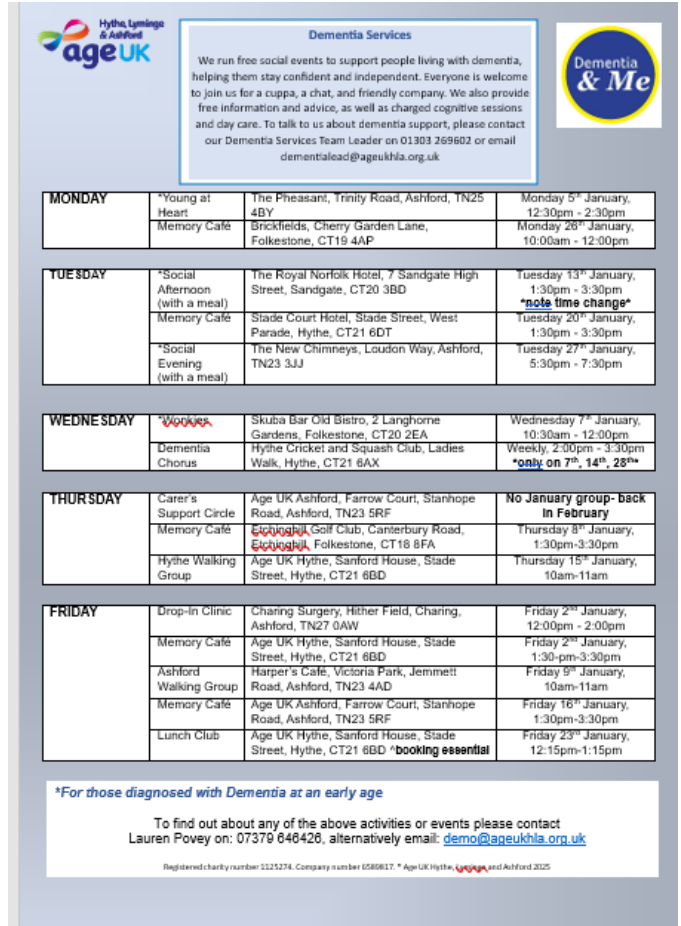
We are back every Wednesday of the month from
14th, 21st and 28th January 2026 :
11:15AM - 12:15PM
at the Methodist Church.

The Methodist Church, Church Rd,
Lyminge, CT18 8JA

Hythe, Lyminge & Ashford
ageUK

Registered charity number 1125274.
Company number 6589817.
* Age UK Hythe, Lyminge and Ashford 2025.

THE NATIONAL LOTTERY



Dementia Services

We run free social events to support people living with dementia, helping them stay confident and independent. Everyone is welcome to join us for a cuppa, a chat, and friendly company. We also provide free information and advice, as well as changed cognitive sessions and day care. To talk to us about dementia support, please contact our Dementia Services Team Leader on 01303 269602 or email dementialead@ageukhla.org.uk

MONDAY	*Young at Heart Memory Cafe	The Pheasant, Trinity Road, Ashford, TN25 4BY Brockfields, Cherry Garden Lane, Folkestone, CT19 4AP	Monday 5 th January, 12:30pm - 2:30pm Monday 26 th January, 10:00am - 12:00pm
TUESDAY	*Social Afternoon (with a meal) Memory Cafe *Social Evening (with a meal)	The Royal Norfolk Hotel, 7 Sandgate High Street, Sandgate, CT20 3BD Stade Court Hotel, Stade Street, West Parade, Hythe, CT21 6DT The New Chimneys, Loudon Way, Ashford, TN23 3JJ	Tuesday 13 th January, 1:30pm - 3:30pm *note time change* Tuesday 20 th January, 1:30pm - 3:30pm Tuesday 27 th January, 5:30pm - 7:30pm
WEDNESDAY	*Bookers* Dementia Chorus	Skuba Bar Old Bistro, 2 Langhorne Gardens, Folkestone, CT20 2EA Hythe Cricket and Squash Club, Ladies Walk, Hythe, CT21 6AX	Wednesday 7 th January, 10:30am - 12:00pm Weekly, 2:00pm - 3:30pm *only on 7th, 14th, 28th*
THURSDAY	Carer's Support Circle Memory Cafe Hythe Walking Group	Age UK Ashford, Farrow Court, Stanhope Road, Ashford, TN23 5RF Exchough Golf Club, Canterbury Road, Exchough , Folkestone, CT18 8FA Age UK Hythe, Sanford House, Stade Street, Hythe, CT21 6BD	No January group- back in February Thursday 8 th January, 1:30pm - 3:30pm Thursday 15 th January, 10am-11am
FRIDAY	Drop-In Clinic Memory Cafe Ashford Walking Group Memory Cafe Lunch Club	Charing Surgery, Hither Field, Charing, Ashford, TN27 0AW Age UK Hythe, Sanford House, Stade Street, Hythe, CT21 6BD Harper's Cafe, Victoria Park, Jemmett Road, Ashford, TN23 4AD Age UK Ashford, Farrow Court, Stanhope Road, Ashford, TN23 5RF Age UK Hythe, Sanford House, Stade Street, Hythe, CT21 6BD *booking essential	Friday 2 nd January, 12:00pm - 2:00pm Friday 2 nd January, 1:30pm-3:30pm Friday 9 th January, 10am-11am Friday 16 th January, 1:30pm-3:30pm Friday 23 rd January, 12:15pm-1:15pm

**For those diagnosed with Dementia at an early age*

To find out about any of the above activities or events please contact
Lauren Povey on: 07379 646426, alternatively email: demo@ageukhla.org.uk

Registered charity number: 1125274. Company number 6589817. * Age UK Hythe, Lyminge and Ashford 2025

JANUARY WORDSEARCH

The Roman god of beginnings, Janus (famously depicting two faces, looking in opposite directions - one to the past and the other to the future) symbolises the beginning of the New Year, January.

P O S E I D O N A V Z N N O L V O L L K
J S K O D S E W T R A B E J O R E L U C
Y Z P K U Y U M H P Q G P N M L Z N C A
X Z Z E M A R S E N M L T Z A Y L A U I
O H Z Q J F K L N T Z I U W I C P O O S
J U P I T E R W A U E B N N U H L J P W
D Z A P W W V E F H B R E E R A C U O A
I P S U S Y N O I D A V H O R F T E V A
T H U B X D P D O Z L A D F C V O N W T
H Y K Z Q T D C G K T I Y X N J A Z U S
J G V H N D K R K I T X C C Y V T C Y E
C A W G S F X S H E C K M P S L L J P V
K A D E O Y H K P N D N M D A T J T G Z
U C S C R N S F M Q V O J N T M D R P T
V G I T E N O V A J L S V K U N J Z W L
V K N B V T D Y R U C R E M R L J P V P
K Z R I U I B O V Z L Q W J N R I P Z I
L Y Y L A C W C X L E Q Q B O A U P N C
G U P N M O T Z R E K O P C M N Z U Q O
B X A Z T W T D B C K F C G J S B T T D

Can you find more Greek and Roman gods in our January wordsearch.?

APHRODITE APOLLO

ATHENA DEMETER

DIANA DIONYSUS

EROS JUPITER MARS


MERCURY MINERVA

NEPTUNE PAN

POSEIDON

PLUTO SATURN VENUS

VESTA VULCAN ZEUS



incorporating

colebrooksturrock.com





Sell or Let your home in 2026 with Colebrook Sturrock

Market your home ready for 2026 and take advantage of our Special New Year Promotion!

1%^{+VAT} Sales Fee*

*To receive our promotional offer of 1% +VAT sales fee please quote "New Year" when arranging your free valuation before the 31st January 2025.

Covering Hawkinge & Elham plus all surrounding villages 01303 892000

Tel: 01303 892000/01303 840422
www.colebrooksturrock.com

Email: hawkinge@colebrooksturrock.com
Email: Elham@colebrooksturrock.com

Information & Advice: Drop In Sessions

Every Monday
Drop In Sessions are open from 10AM - 1PM



Lyminge Library, 7-9 Station Rd, Lyminge, Folkestone CT18 8HS

Need support with benefits, available services or other issues affecting later life? Our Information & Advice Drop-In offers free, confidential guidance on a range of topics, including:

- ✓ **Benefit checks to see what you may be entitled to**
- ✓ **Blue Badge applications**
- ✓ **Local community resources**
- ✓ **Health & wellbeing services**

No appointment needed—just drop in and speak with our friendly team!

Call 01303 269602 for more information



Registered charity number 1125274.
Company number 6589817.
* Age UK Hythe, Lyminge and Ashford 2025.



Community Meals

Our Home Meal Delivery Service brings you a freshly cooked hot meal and dessert, delivered straight to your door — hot, tasty, and ready to eat. We're here for you 365 days a year, making sure you never have to worry about missing a meal. In addition to your main meal, a Tea-Time Bag is also available, providing a light and convenient option for later in the day.



Fun, friendship, and activities for everyone

At Age UK Hythe, our Day Services are all about bringing people together to enjoy stimulating, engaging and enjoyable activities in a welcoming and supportive environment. We offer a wide range of activities to suit every interest, from singing, art and painting, to cooking sessions and craft projects. For those who enjoy being active, we also provide opportunities for gentle physical activities such as New Age Curling and chair-based exercises.



Dementia Day Care Services

Our Dementia Day Care service provides a warm, supportive environment where people living with dementia can enjoy stimulating activities, companionship, and care tailored to their needs. From music, art, and gentle physical activities to reminiscence sessions and sensory experiences, our programmes are designed to help maintain skills, build confidence, and create moments of joy. Families can feel reassured knowing their loved one is supported by our experienced team.





Hythe, Lyminge & Ashford

For more details please contact:
Age UK Hythe, Lyminge & Ashford
01303 269602
www.ageuk.org.uk/hythelymingeashford/

Age UK Hythe: The Community Support Hub, Sanford House, Stade Street, Hythe, CT21 6BD.
 Registered charity number 1125274. Company number 6589817. © Age UK Hythe, Lyminge and Ashford 2025.



**WELCOME TO
COCKPIT COTTAGE**

Cockpit Cottage is a 5 bedroom cottage set just off the village square of Elham. The whole cottage has been styled and furnished using Neptune, Canterbury and the bathrooms have been finished in both Burlington & Booth & Co.

Ideal for...

Family Getaways | Staycations | Visiting Guests
Bridal Parties | Date Nights

T: 01303 316600 | E: info@cockpitcottageelham.com
W: cockpitcottageelham.com | Insta: [@cockpitcottageelham](https://www.instagram.com/cockpitcottageelham)



THE KING'S ARMS

WHAT'S ON AT YOUR COUNTRY PUB...

QUIZ NIGHTS

JOIN US ON THE 2ND MONDAY OF EVERY MONTH FOR A QUIZ NIGHT FULL OF TRIVIA, THEMED ROUNDS AND PRIZES! TEAMS OF UP TO 6 PEOPLE

MUSIC

SATURDAYS

JOIN US EVERY SATURDAY 4-6PM FOR LIVE MUSIC! BRING YOUR FRIENDS, ENJOY THE MUSIC AND MAKE SATURDAY AFTERNOONS YOUR NEW FAVOURITE TIME OF THE WEEK!

KITCHEN OPENING HOURS

Our Winter Menu -	Friday & Saturday -	Golden Years Menu (65+)
Monday - Thursday	Lunch 12-3pm	Monday - Friday
Lunch 12-3pm	Dinner 5.30-9pm	12-3pm
Dinner 5.30-8.30pm	Sunday	BAR MENU
Lunch 12-6pm	Lunch 12-6pm	MONDAY - SATURDAY
		12-5PM

FOR RESERVATIONS & ENQUIRIES PLEASE CALL US ON 01303 840242

Email: info@thekingsarmselham.com
Address: The Square, St Mary's Rd, Elham
Canterbury, CT4 6TJ



A charming and characterful micropub located on our working farm in Acrise.

Open Friday 16:00 – 22:30

(drinks and bar snacks)

Saturday 12:00 – 22:30

(with food and live music)

Sunday 12:00 – 18:00

(drinks and bar snacks)

**Blandred Farm, Reece Lane, Acrise
CT18 8LW**



Established 1988

DOMESTIC CLEANING SERVICES LTD

Regular or One-off Cleaning

Homes and Holiday Lets

End of Tenancy

Moving Cleans

Spring Cleans

Professional, Friendly, Reliable Service

CALL US NOW FOR A FREE QUOTATION

Tel: 01227 277033 | www.supermaids.co.uk

info@supermaids.co.uk



Now offering additional clinic appointments - book today

- Nail Cutting
- General Foot Health
- Diabetic Foot Care
- Callous Removal
- Fungal Nail
- Verruca Treatments
- Ingrown Toenail

4 Station Road, Lyminge. CT18 8HP
07832797341
jayne@solelyfootcare.co.uk
www.solelyfootcare.co.uk



**Guided Safaris
Self-Drive Adventures
Tailor Made Holidays**



Contact Your Elham Safari Specialist

www.yoursafari.co.uk
kathryn@yoursafari.co.uk
01233 510269

Jeff's Computer Services for all your computer needs

£30 per hour

Fifteen years experience
Based in Elham

Services include:

Phones, TVs, Tablets, Laptops and PC set up. Data & Virus services. Hardware & Software upgrades. PC and Laptop repair. Cyber security. General and technical advice. Small group and individual tuition.

Friendly & local service
Contact Jeff Martin BSc (Hons) MBSC
on:

01303 840838/07761 299895 or
jeff@jeffmartin.co.uk

For website building and hosting visit
www.jeffmartin.co.uk



foot fine care

Setting your feet free

We provide care and treatment for foot and nail conditions, as well as micro-suction ear wax removal, in the comfort and privacy of your own home. Based in Canterbury, serving South East Kent.

- EAR WAX REMOVAL • NAIL CLIP AND FILE
- CORN + CALLUS REMOVAL • CRACKED HEELS
- INGROWN NAIL • FUNGAL NAIL INFECTION
- THICK NAIL REDUCTION • DIABETIC FOOT CARE • VERRUCA



WWW.FOOTFINECARE.COM **MON-FRI 9AM-5PM**

07526 355488 - footfinecare@gmail.com



**East Kent
Foot Care**

Clinics in Ashford, Dover, New Romney Home visits on request

07745 532075

Podiatry, Chiropody, Foot Health.

Treating and managing foot and nail conditions, corns, callus, insoles, ingrown nails, diabetic foot care

www.eastkentfootcare.co.uk

Sara's Fruits

Apple and Pear Juice - 1 Litre Bottles
Frozen Fruits 500g Freezer Bags

FRESH BERRIES NOW ALSO FOR SALE

Raspberries Blueberries

Littlegate House, Park Gate, Elham CT4 6NE

Email sara@littlegatehouse.com

07980911589

Do you need a helping hand?

Garden and Domestic Work
House and Pet Sitting
Small Animal Care



Then please 'phone

Fiona Johnson

01303 840507

(working locally for 30 years)

NACS Registered
HETAS Qualified
Fully Insured
Chimney Lining Over 10 Years' Experience
Pots & Cows
Fireplaces Fitted
Stoves Installed & Serviced

P J Sweeps
Phillip Joiner
Chimney Engineer





01227 700 909 pjsweeps@hotmail.co.uk

RALPH ALLARD CHIMNEY SWEEP

Brush and Vacuum
All Chimneys, Boilers and Stoves Swept
Woodburning Stoves and Fireplaces Fitted,
Chimneys Lined
Certificates Issued
HETAS and NACS Registered, Fully Insured
Member of the
National Association of Chimney Sweeps
Tel: 01303 844465 - Mob: 07813 716654

SNIPPERS & CLIPPERS UNISEX HAIR SALON

✂ APPOINTMENT NOT ALWAYS NEEDED

✂ WEDDING & SPECIAL OCCASION

✂ GENTS WELCOME

✂ FREE WIFI

✂ SHELLAC NAILS

4 Station Rd, Lyminge,
Folkestone,
Kent, CT18 8HP

☎ 01303 647 222

✉ info@snippersandclippers.co.uk



PENNYPOT DENTAL

CREATING CONFIDENT SMILES

New Patients Welcome

General and Cosmetic Dentists

- Tooth Whitening
- Hygienist Services
- Adult Brace Systems
- Convenient Opening Hours
(early mornings, late evening & Saturdays)

and much more...



90 Canterbury Road, Hawkinge, CT18 7BN

hawkinge@pennypotdental.co.uk

01303 760149

www.pennypotdental.co.uk

JP'S BARBER BUS

A UNIQUE BARBER & HAIRDRESSING EXPERIENCE

EST. 2020

BARHAM

VILLAGE HALL CAR PARK

EVERY THURSDAY AND SATURDAY

8:00 am - 1:00 pm

CASH OR CARD ACCEPTED

BOOK FOR THE FUTURE



Scan me!

☎ 07500 504788

📍 Jp's Barber Bus

📱 [jpsbarberbus](https://www.instagram.com/jpsbarberbus)



www.iane Brennanfitness.co.uk / iane Brennanfitness@gmail.com

Pilates, Skeletal alignment exercises and Stretch
Tuesday Morning 08.30-09.25 and 9.30-10.25
Elham Village Hall CT4 6SX

Thursday morning
Pilates, Mobility exercises and Stretch
08.30- 09.25 and 09.30- 10.25
Elham Village Hall CT4 6SX

Bring your own mat, towel and water.

PAYMENTS MONTHLY IN ADVANCE:

£30.00 = 1 CLASS A WEEK. £60.00 = 2 CLASSES A WEEK.

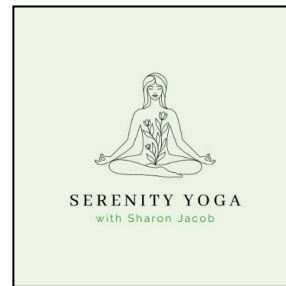
Rehabilitation

Do you need help with?

- Stroke Recovery
- Post Operative
- Balance
- Posture and skeletal movements
- Motor Skills
- General Rehabilitation
- Joint Replacement Rehabilitation
- Cardio rehabilitation

In the comfort of your own home.

Please call 07710747499 Jane To Pre Book or more Information



**Hatha, Zen and Yin Yoga
Mindfulness Meditation
Trauma Informed Yoga
Pre and Post Natal Yoga
1:1 and group classes**

Gentle Evening Yoga, Wednesdays 7-8 PM

Morning Yoga, Fridays 10-11 AM

Currently at St Mary's Church Hall, Elham

serenityyoga20@gmail.com

www.serenityyoga20.com

@serenityyoga



AK Healthcare



Osteopaths Adam and Katie are here to help you minimise your pain, optimise your mobility, and enhance your health and wellbeing.

We believe that everyone deserves to live a life free from the limitations of pain, and we're here to support you on your journey to a healthier, more active lifestyle.

Whether you are searching for help managing a chronic condition such as arthritis or circulatory problems, or you have a painful frozen shoulder, back pain, sciatica or recent injury.....we are here to support you.

Book online via our website or give us a call for more information.

**AK Healthcare
Garden Suite
4 Station Road, Lyminge**

Tel; 07904311554 / 07980897382
www.akhealthcare.org.uk

Essential Beauty


janenemoat@gmail.com



Essential beauty-Beauty therapy - aromatherapy -
reflexology - reiki

Non surgical lift facial, collagen facial, manicures,
pedicures, eyelash lift and tinting, eyebrow
tinting and waxing.

Experienced therapist Janene Moat
Call Janene 01303 840052

Find essential beauty on 
Gift vouchers available



Hawkinge
Veterinary Surgery

An independently owned veterinary surgery for all types of small animals.

Separate waiting, consultation and recovery rooms for cats, small pets and dogs.

Opening hours:

Monday to Friday 08:00-19:00

Saturday 08:30-13:00

24hour emergency service

Hawkinge Veterinary Surgery 9b Defiant

Close Hawkinge CT18 7SU

TEL: 01303 764190

www.hawkingevetsurgery.co.uk

email hawkingevetsurgery@gmail.com

Mutts Appreciated

Professional
Dog Grooming Services



Based in Newingreen
Fully qualified and insured
All breeds welcome
Tel: 07927335947
Instagram: @muttsappreciated

BARKING BEAUTIES

01303 840456 / 07866 463660

Unit 11, Barham Business Park

Valley Road, Barham CT4 6DQ

Fully qualified City and Guilds grooming:

Bathing, drying, nail clipping. De-matting. Hand stripping and de-shedding.

Fully qualified City and Guilds Master Diploma and K9 First Aid qualified.

£16 for simple wash and blow dry.

www.affinityandbarkingbeauties.co.uk



Elham

Dog Training Club

Elham Village Hall

Kennel Club Good Citizen Dog Scheme

All Levels Training

Puppy Training

Talking Dog's Rally Training

**Kennel Club Accredited Instructor and
Kennel Club Good Citizens Scheme
Assessors**

Please call Sue Coulstock to book a space
07747598383 or

email: elhamdtdc@gmail.com

Visit **www.elhamdogtrainingclub.com** for more information

Anna's Animal Physiotherapy

RVN, Dip. A. Physio, IAAT.



Offering physiotherapy assessment and treatment of dogs, cats and small animals.



Physiotherapy helps with osteoarthritis and the ageing pet, post operative orthopaedic surgery, neurological and spinal conditions, as well as unexplained lameness and many more conditions.

I use a combination of manual therapy, electrotherapies and targeted exercises to rehabilitate your pet depending on your their needs. I also address environmental and exercise factors that can help your pet with their condition and we construct a home treatment plan that works for you and your pet.

I have over 19 yrs experience working with animals, I am fully insured and am a member of the International Association of Animal Therapists (IAAT).

For more information please visit my website:

annasanimalphysio.co.uk

or feel free to contact me on 07944 606453

or email me at: **anna@annasanimalphysio.co.uk**

Instagram: [@annas_animal_physiotherapy](https://www.instagram.com/annas_animal_physiotherapy),
Facebook [@annasanimalphysiotherapy](https://www.facebook.com/annasanimalphysiotherapy)



Nicki's Garden Design and Maintenance

Hadlow College Trained and Qualified
Bespoke planting designs from whole garden projects to re-designing old tired borders. Plants can be supplied.

General Maintenance

Weeding, pruning, lawn mowing, hedge cutting, planting.
Gardening can be provided on a weekly, fortnightly or seasonal basis.
Nicki 07748 628993 Email: nickisgardendesign@gmail.com



Pratt & Co.

Home & Garden
Makeovers to Maintenance

07711 756187

lancepratt@hotmail.co.uk

R.B.W.

**KENT'S WATER FEATURE SPECIALISTS
AND POND BUILDING EXPERTS**

- Garden/Pond Design, Building and Refurbishments
- Pond Cleaning/Maintenance/Maintenance Contracts
- Child Safe Pond Covers
- Filtration Specialists
- Patios-Decking-Fencing-Brickwork-Arbours



Tel. 07563 212858
FREE ESTIMATES and CONSULTATIONS

www.reflectionbywater.com
Email: andrewlongrbw@hotmail.com



**Tree Work-Hedge Cutting
Lawn Mowing - Pruning
Garden Maintenance
Garden Waste Clearance**



and so much more!

Thoughtful garden care, local to you.

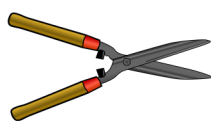
hello@foxandoak.co.uk

www.foxandoak.co.uk

07793 061380

KJB

Garden Services



**Mowing Pruning
Weeding
Hedge cutting
General garden
maintenance**

**Over 35 years
experience**

Contact Kevin
01303 862181
Mobile 07704989402
Email kbaldock06@gmail.com



**Hythe Garden
Landscapes**

Established in 2001, award winning Hythe Garden Landscapes have been delivering the highest level of service to both domestic and commercial clients for a number of years.

We are fully insured members of the Association for Professional Landscapers (APL) and encompass every aspect of gardening including:

- One-off garden tidy
- Garden maintenance packages
- Complete garden builds
- Pruning
- Planting
- Tree surgery
- Turfing
- Lawn Treatment
- Winter garden services

Please take a look at our website

www.hythegardenlandscapes.co.uk

to see some of the projects that our professional, reliable team have completed, or call us on

01303 770610

R.J.Mills & Son
BUILDING CONTRACTORS

New builds, extensions and restoration
Loft conversions and renovations
Groundwork, drainage and patios

35+ years experience
Free estimates and advice



Mobile: 07899 883925 Email: rj.mills@btinternet.com

SID MOFFATT

Carpenter Builder
Painter and
Decorator
Tel 01303 840630
07812 638693



Carpentry, Joinery & Handyman services including:
Shelving - Cupboards - Wooden Floors - Door Hanging
Door Furniture - Bespoke Woodwork - Shed Repairs
Garden Maintenance - Concrete Bases

RELIABLE - LOCAL - FULLY INSURED

01303 844 409 / 07808 731 118
www.julesharrison.co



Your Local Electrician
For all your electrical needs

- ❶ Qualified, experienced & professional electricians
- ❷ Fully Insured
- ❸ All electrical work carried out - to include full re-wires, garden/outdoor lighting, Electric Vehicle Charging points...
- ❹ Call us today to discuss your requirements.

Mobile: 07878 457018
Office: 01303 814372
Email: info@hughes-electrical.co.uk



www.hughes-electrical.co.uk



C M Carpentry & Building Services

Work undertaken -

- : Carpentry work
- : Extensions
- : Refurbishments
- : Garage Conversions
- : Patios
- : Fully Qualified installers of Resin paths & drives
- : Fully Qualified "Tuffstuff" fibreglass roof installers with a 25 year product guarantee.
- : General building maintenance
- : Fully insured, friendly and local professionals carry out all works.
- : Free Quotations.
- : References available.

Contact Charlie Mills on -

M: 0789 003 8645

E: cmcarpentry@hotmail.com




Facebook Instagram NIEL
**APPROVED
CONTRACTOR**

**If you wish to
advertise here, the
cost is £55 per annum.**

**Please contact
elhamnewsletter@gmail.com**



Helping people live safer, more enjoyable lives

Your local electrical and smart home contractor

-  **Electrician**
-  **Smart Home & WIFI**
-  **Security Systems**
-  **EV Charging**

Looking for a local electrical and smart home contractor you can trust?

"Nathan has been super helpful in troubleshooting a couple of problems in our home. If you're looking for an electrician whose professionalism matches the quality of his work don't hesitate to give him a call!"

- Five star service and reviews. NICEIC domestic installer with full insurance.
- Family owned & operated, local company, no call out fee.
- Contact us today for a free electrical safety inspection.

Tel: 01303 647340
Mob: 07971 857475

help@inspiredsmartliving.com
www.inspiredsmartliving.com



INSPIRED
SMART LIVING LTD

JACKSON PLUMBING

Domestic plumbing and property maintenance

No job too small

Special Rates for O.A.P.s

Free estimates

Home/evening: 01303 270691

or daytime direct line to the proprietor

07773 089398 or 07864 929826

Email: jackson.mark20@gmail.com



OIL BOILER SERVICE

- * Established 1987
- * Friendly family business
- * Prompt professional service
- * Sensible prices
- * Fully qualified and insured



For routine service or emergency breakdowns

Call 01227 760428 or 07768 594147

www.oilboilerskent.co.uk



Swanson Plumbing and Heating

Local Elham Valley

experienced plumber

Reliable and on time

From taps to bathrooms
to complete heating systems

24hr emergency service

Call 07971090018 / 01303 840177

Email FBS_LTD@Yahoo.co.uk



Here to make a difference

FINCHAM

PLUMBING and HEATING

We specialise in
bathroom remodelling,
including all tiling and pipework.
Natural gas boiler servicing.
Installation, Maintenance, Repairs
and Replacement.
All your plumbing requirements.
Martin is a qualified Plumber
Gas Engineer

Gas Safe registered.

Rosemary and Martin Fincham

07835 851 706

martinfincham@sky.com

Luxury German Kitchens at Internet Prices



Contemporary and traditional styles
Family run local business with the most
experienced design team in the area

Built-in appliances from Neff, Bosch, Siemens and Mele

Visit our showroom at: Units 8-10 Kingsmead, Park Farm Ind. Est.
Folkestone CT19 5EU

01303 223322

info@tradexltd.co.uk

www.tradexltd.co.uk

CAROL CREES CLEARANCES

**HOUSE CLEARANCE IN SOUTH EAST
KENT**

Based in Folkestone

Full/Part House Clearance

Est. over 30 years – Fair Prices Paid

Antique/Vintage/Retro/Modern

Registered Rubbish Carrier

Contact **SIMON CULLEN** 07745 421680

sijnzo@aol.com



CEDAR HOME MAINTENANCE
General Builders and Roofing Specialist

Roofing.-PVC.-.windows/doors.-.Kitchens/
Bathrooms.-.Plastering.-.Electrical-
Installations - Plumbing

CALL NOW FOR A FREE
NO OBLIGATION QUOTATION
All Work carried out by Qualified Tradesmen
(Fully insured – all areas of Kent covered)
Mobile: 07968197613 Office: 01303 230787
Email: cedarhm@hotmail.co.uk
www.cedarhomemaintenance.co.uk

Air Link Cars

(You pack up, We pick up)



**Airport, Seaport and Long Distance
Travel Specialist**

The family run business
where service really counts.
Estate cars and people carriers.
Fixed price 24 hrs a day. No extras.
Written confirmation of booking.

Established 10 years.

For the Easy Airport Link, Think Air Link!
01303 670370 / 07766824474
airlinkcars@yahoo.com

D.M.B. Plastering

All aspects undertaken

*Interior, Exterior, Plastering, Rendering,
Coving, Ceilings, Walls, Floors*

Finest quality assured, CSCS Certified

28 years experience

**Free estimates - Reliable service - Fully
insured**

Call David on 07818 607209

Need a Van? Then I'm your Man!

**For all light removals, furniture, domestic
items including house clearances**

- Avoid expensive deposits, pick-ups and drop-offs
- Remove, dispose of or recycle all household items, including electrical appliances
- Based in Barham
- Reasonable and fair rates
- Free estimates and quotations



Call Christian on 07771 728080

Email christianmanandvan@gmail.com

ANDY MANNERING FLOORING

SPECIALISING IN AMTICO AND KARNDUAN
LUXURY VINYL TILES

Also Safety Flooring, Rubber Flooring etc
Commercial and Domestic Work Undertaken
No Job Too Small

Free Estimates and Advice Given
Over 35 years experience
Fully Insured

Telephone: 0797 434 7248 or 01303 863095
info@andymanneringflooring.com

Please visit my website for further information and to view
my Feedback
www.andymanneringflooring.com

SARAH de ROUGEMONT

UPHOLSTERY

Established 1990

Loose Covers - Fabrics -

Roman Blinds

All commissions considered

Tel: 01227 455841

Mob: 07973 377817



Kingdom

I N T E R I O R S

- Carpets & Flooring
- Painting & Decorating
- Interior Inspiration

Your local, experienced, interior specialists,
covering Hythe, Folkestone, New Romney,
Lympne, Elham Valley and surrounding villages.

01303 901298

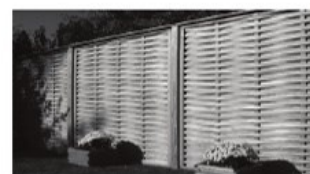
Email: shop@kingdom-interiors.co.uk
www.kingdom-interiors.co.uk

T. Metcalfe Fencing Contractors

Approved Expert Installer for Jacksons Fencing

Established over 30 years

Fully insured - Highly experienced teams



**Panel fencing, gates, decking, pergolas, post & rail,
stock fencing, security, landscaping & tree surgery.**

01303 840201

07790 290155

metcalfefencing@btinternet.com

**Proprietor - Derek Burr,
Ash Ridge House, Elham**



Jacksons

**Quality that lasts
Fine Fencing, Gates & More**

**EXPERT
INSTALLER**



Wraith's

Tree Services - Grounds Maintenance - Stump Removal



- * All Types of Tree Surgery
- * Hedge Cutting

- * Tree Stump Removal
- * Mowing, Strimming & Clearance

Full Public Liability Insurance

**Tel: 01303 840254
E-mail: ben@wraiths.co.uk**

**Mob: 07814 379639
Web: www.wraiths.com**

**City &
Guilds
NPTC
Qualified**

Bossingham Groundworks and Landscaping

**Excavation
Site Clearance
Demolition
Brickwork
Turving**



**Stables
Fencing
Drainage
Concreting
Driveways and
Patio's**

Mob 07894 007660



CEDAR TREE CARE

All types of tree work undertaken

**Crown lifting, crown reductions,
dismantling and removals, hedge maintenance,
pollarding, stump grinding and removal, mobile saw milling,
wood land maintenance, all year round seasoned logs available**

**Fully insured and NPTC qualified with over 15 years experience
Call Tom: 07769 908027 email: linchlogs@gmail.com**

**City &
Guilds
NPTC**

If you wish to
advertise here, the
cost is £55 per annum.

Please contact
elhamnewsletter@gmail.com

DILTON

MINI SKIP HIRE

2, 3 & 4yr SKIPS AVAILABLE

BALLAST, HARDCORE, SAND
TOPSOIL SUPPLIED

REGISTERED WASTE CARRIER

07799 433754

01303 812448

**HARMER and SON
LTD**

Ground Maintenance Ltd

Grounds maintenance,
turfing, fencing

FREE ESTIMATES

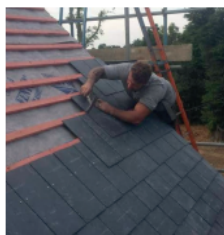
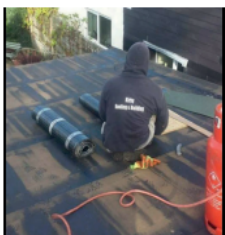
Tel: 01303 893414 or



07831394372

Daniel Kirby Roofing & Building

www.d-kirby-roofing-folkestone.co.uk



**30 Year's Experience
Reliable Local Roofer
Free Quotes**

**FIND A SAFE,
LOCAL TRADER**
The Only Traders Vetted By Kent
Trading Standards



**All Roofing Work • Fibreglass & Felt Flat Roofing
Chimney Building & Repairs • New Roofs • Alterations
Insulated Conservatory Conversions • General Building**

Tel: 01303 892705


Mob: 07916 273886

E: roofersfolkestone@gmail.com www.d-kirby-roofing-folkestone.co.uk



Explore, discover and grow at Elham Pre-School

- A large, spacious hall with modern and well-maintained facilities;
- Extensive outdoor space for children to explore and enjoy clean, fresh air and beautiful countryside;
- Excellent equipment, with a wide variety of toys and stimulating activities, all rotated daily;
- Caring, nurturing and highly qualified staff, all of whom are parents themselves;
- Consistently good OFSTED reports;
- Very competitive rates.



SPACES AVAILABLE NOW!

www.elhampreschool.co.uk

Email: elhampreschool@gmail.com Tel: 01303 840041
Elham Pre-School Elham Village Hall High Street Elham Kent CT4 6SX
Registered charity number 1125226 Registered company number 6630170





ROBERT KENT Cert.fp
FUNERAL DIRECTOR
RKFUNERALS.COM

Direct Cremation **£1195**


Fair Priced Cremation **£1950**

Traditional Funeral **£2595**

01303 684062 24hrs

The need for sincerity, compassion and care are not compromised by our value for money approach.

Based in Etchinghill, I provide a personalised service with a one-off flat fee of £180.00 to prepare and submit your Tax Return.



**No hidden costs. FMAAT Licensed Accountant,
fully insured and HMRC authorised.**

**Ring Anita on 07361 238744 or email
aabookkeepingservicesaadams@gmail.com**

Girlings

SOLICITORS

Employment Law

Dean is an Associate at Girlings Solicitors and his practice includes advising individuals and businesses across a wide range of employment and HR issues.

Contact Dean or another member of the employment team for advice on/assistance with:

- Employment Tribunal claims
- HR matters
- Staff handbooks and policies
- Corporate transactions and TUPE
- Business restructuring and redundancies
- Settlement agreements
- Contracts of employment and consultancy agreements

A black and white portrait of Dean Hawkins, a man with short dark hair, wearing a dark suit jacket over a light-colored shirt. He is looking directly at the camera with a slight smile.

Dean Hawkins

Associate (FCILEx)

deanhawkins@girlings.com

A badge for the Legal500 United Kingdom 2025 Leading Firm award. It features the text 'LEADING FIRM' at the top, 'Legal500' in a large font, 'UNITED KINGDOM' below it, and '2025' at the bottom.

girlings.com

Ashford
01233 664711

Canterbury
01227 768374

Herne Bay
01227 367355

East Kent Mole Catcher

No Mole – No Fee

**Your local mole catcher, based in Ash,
covering all local towns and villages.**

Offering mole control for your lawns, gardens and paddocks. Public liability insurance.

Call/Text – Keith, East Kent Mole
Catcher 07876 686543

Email – molecatcherkeith@hotmail.com
www.eastkentmolecatcher.co.uk

**If you wish to
advertise here, the
cost is £55 per annum.**

Please contact
elhamnewsletter@gmail.com

Your Local Pharmacy

- NHS & Private Prescriptions
- Travel and Speciality Vaccination Clinic
- Weight Loss Clinic
- FREE Delivery Available
- Private Prescriber Available
- Emergency Medication Supply
- NHS Flu & Covid Vaccinations
- Free Blood Pressure Checks
- Pharmacy First Service
- ONE YOU Stop Smoking Provider



*Lyminge
Pharmacy*

Delivering prescriptions to the local community of Lyminge, Elham, Etchinghill, Postling, Hythe, Rhodes Minnis, Stelling Minnis and the surrounding areas

Ask a member of staff to learn more

Contact us at

Tel: 01303 862425

Email: lymingeinfomed@gmail.com

Or come in to the store:
21 Station Rd, Lyminge, Folkestone
CT18 8HQ



**Laing
Bennett**
Independent estate & letting agents

With our excellent local knowledge & experienced staff we will get you moving

- ✓ **Free** professional photography, property floorplan, Rightmove premium listing & social media advertising

01303 863393

The Estate Office,
8 Station Road,
Lyminge,
Kent CT18 8HP

Follow us on
social media



www.laingbennett.co.uk

WILLS

TRUSTS

POWER OF
ATTORNEY

PROBATE

squiggle

Death isn't something most of us want to talk about or think about. And why would we? But what we DO want is for our loved ones to be looked after when we're gone.

And yet, nearly half of us don't have a will or even a plan for our estate when we die. It's something many just don't get round to - despite knowing that we should.

Book your free consultation with Squiggle today.

01233 659796

www.squiggleconsult.co.uk

Squiggle Consult Ltd | 11 Park Barn, Evegate Business Park, Mersham, TN25 6SX | Registered Company - 10816512



130 Club

You've got to be in it to win it!



12 monthly draws.
£12.00pa for each number.
Three prizes each month.
Contact Martin Turner for an application form.
840804/ jgt867@aol.com

The 130 Club is run by Elham Village Hall Association Ltd. Reg Charity No: 1024757

Elham Village Hall Association

Annual General Meeting

Thursday 22 January

7.30 for 8.00 at the Village Hall

Free drinks and nibbles
All welcome.
Put the date in your diary !
Come and find out what we do.



Join us in the
**Elham
Community
SHED**
to celebrate our

1st anniversary
on Saturday 10 January
7.00pm in the Peggy Pike Room at
Elham Village Hall

Social, Snacks and Cinema

Elham Village Hall 7.30pm on the first Wednesday of the month.



Entry on the door: £5.00 for EVHA friends.
Others £6.00
Pay Bar available from 7.00pm

The EVH logo is at the top right.

Total number of gifts received by the singer in 12 days is 364, the gifts are cumulative. Did you get it right?