



# ELHAM NEWSLETTER

**FREE** to you, paid for by  
Elham Village Hall

**JULY 2025**



Published by the Elham Village Hall Association, Charity No 1024757

Also available on the EVHA website, [www.elhamvillagehall.co.uk](http://www.elhamvillagehall.co.uk).

Events and News available to read on Facebook, Elham Village Hall, and on  
[www.visitelham.co.uk](http://www.visitelham.co.uk).



A Kent summer sunset for you to appreciate — sent by Julia Newman. The calm before the storm of Friday 13 June!

## ***What's On, In and Around ELHAM***

Date	Event	Time	Location	Contact	Page
Tuesday 1/8/15/22/29 July	Elham Community Shed	10.00 - 12.00	The Shed, Elham Village Hall	elhamshed@gmail.com	26
Wednesday 2 July	Age UK Singing for All	11.30-12.30	Tayne Centre CT18 8JN	See Poster	27
Wednesday 2 July	Social Snacks and Cinema	19.00 for 19.30	Elham Village Hall	Jan Stanyon 01303 840820	4
Thursday 3/10/17/24/31 July	Elham Community Shed	10.00 - 12.00	The Shed, Elham Village Hall	elhamshed@gmail.com	27
Monday 7/14/21/28 July	Elham Community Shed	10.00 -12.00	The Shed, EVH	elhamshed@gmail.co m	27



## WHO'S WHO and WHAT'S WHERE

### ELHAM VILLAGE HALL PERSONNEL (all are volunteers)

**President:** Jan Stanyon  
**Vice President:** Liz Cox  
**Treasurer:** Sue Weller  
**Secretary:** Miranda Weller

#### *Other Committee members:*

Maureen Alexander Trevor Bateman  
 Renee Bull Jim Clements  
 John Tebbs Jon Vince

Registered Office: Elham Village Hall, High Street, Elham, CT4 6SX

[www.elhamvillagehall.co.uk](http://www.elhamvillagehall.co.uk)

[elham.co.uk](http://elham.co.uk)

**Editor and advertising;**  
[elhamnewsletter@gmail.com](mailto:elhamnewsletter@gmail.com)

Renee Bull 01303 840295

**Distribution organiser:**

Janet Pain 07710595891

**Please email any newsletter copy to the editor by 9am on the 13<sup>th</sup> of the month prior to publishing or by hand into the Elham Village Hall bag at Elham Valley Stores.**

Whilst every care is taken in gathering and presenting the information by the volunteer who produces the Newsletter, errors can occur. No responsibility is accepted for any errors or omissions nor consequential loss or liability. Opinions expressed in this Newsletter are not necessarily those of the Elham Village Hall Association. We do our best to produce an interesting, accurate and informative read.

**ELHAM VILLAGE HALL** 01303 840128

**ELHAM SPORTS CLUB** 07714 415651

### DOCTORS

The Elham Surgery, Old Road 01303 840213  
 The Hawkinge Health Centre 01303 232300  
 74 Canterbury Road, Hawkinge

### HOSPITALS

William Harvey, Ashford 01233 633331  
 Kent and Canterbury, Canterbury 01227 766877  
 Royal Victoria Hospital (walk-in) 01303 850202

### PHARMACY

21 Station Road, Lyminge 01303 862425  
 Tesco Pharmacy (Junct 12 M20) 0345 6779273

### SCHOOL

Elham C of E Primary School 01303 840325

### MEMBER OF PARLIAMENT

Sojan Joseph (Lab)  
[sojan.joseph.mp@parliament.uk](mailto:sojan.joseph.mp@parliament.uk)

### KENT COUNTY COUNCILLOR

Christopher Hespe tba

### FOLKESTONE and HYTHE DISTRICT COUNCILLORS

James Butcher (Green)  
[james.butcher@folkestone-hythe.gov.uk](mailto:james.butcher@folkestone-hythe.gov.uk)  
 David Godfrey (Con) 07584 304301  
 Stephen Scoffham (Green)  
[stephen.scoffham@folkestone-hythe.gov.uk](mailto:stephen.scoffham@folkestone-hythe.gov.uk)

### ELHAM PARISH COUNCIL

Chair – Kevin Lamb	01303 840215
Vice Chair – Christeen Chapman	01303 840224
Brian Swan	01303 840006
Kevin Allen	01303 862087
Stuart Peall	07956110887
Geoff Clements	01303 840255
Chris Francis	01303 840502
Clerk - 07702268475 – <a href="mailto:cgreenwood@elhampc.co.uk">cgreenwood@elhampc.co.uk</a>	

### VETERINARY

Lord Whisky Low-Income  
 Veterinary Clinic 01303 862622  
 Bourne Vets, Bekesbourne 01227 832322  
 Manor Vets, Folkestone 01303 273203  
 Hawkinge Vets, Hawkinge 01303 764190

### ELHAM CHURCHES

[www.elhamvalleygroupofchurches.co.uk](http://www.elhamvalleygroupofchurches.co.uk)

#### **St Mary The Virgin, Church of England**

**Rector:** Rev. Carol Bates 0777 239 4855  
 Wardens tba

#### **Methodist Church, High Street**

Minister: Rev. Gill Songer 01303 240228

**SAMARITANS (freefone)** 116 123 or  
[email jo@samaritans.org](mailto:email jo@samaritans.org)

### LIBRARY

Mobile Library is fortnightly in Elham outside the Rose and Crown - Fridays at 12.35 -13.05.

### **HOW TO MAKE BACS PAYMENTS to ELHAM VILLAGE HALL?**

Elham Village Hall Association Ltd  
 Sort Code: 09- 01- 52  
 Account No. 13698706

**Elham Village Hall Association website:**  
[www.elhamvillagehall.co.uk](http://www.elhamvillagehall.co.uk)



# ***What's On, In and Around ELHAM***

Date	Event	Time	Location	Contact	Page
Tuesday 8 July	Elham Valley Walkers	10.00	Peene	Chris Jelly 07518 163183	30
Wednesday 9 July	Age UK Singing for All	11.30-12.30	Methodist Church Lyminge	See Poster	27
Tuesday 1/8/15/22/29 July	Elham Community Shed	10.00 - 12.00	The Shed, Elham Village Hall	elhamshed@gmail.co m	26
Saturday 12 July	Cantores Summer Prom	16.00	Lyminge Village Hall	See Poster	27
Saturday 12 July	Elham Cricket Club Quiz	19.00 for 19.30	Elham Cricket Pavilion	See Poster	29
Saturday 12 July	Sunflower memories Pilgrims Hospice	n/a	n/a	See Poster	17
Wednesday 16 July	Age UK Singing for All	11.30-12.30	Methodists Church Lyminge	See Poster	27
Thursday 17 July	Friendship Lunch	12.30	St Mary's Church Hall	See page 5	
Friday Saturday Sunday 18/19/20	Lyminge Parish on Parade	All day	Jubilee Field Lyminge	See Poster	16
Sunday 20 July	Rhodes Minnis Cat Sanctuary Open Day	11.00-16.00	CT4 6XU	01303 862243	16
Wednesday 23 July	EVHA Volunteers' Day	10.00-15.00	Elham Village Hall	See Poster	7
Saturday 26 July	Elham Gardening Society Summer Show	14.00	Elham Village Hall	See Website and poster	19/23
Sunday 27 July	Elham Valley Walkers	10.00	Smeeth TN256SB	Nikki Allen 07708 099149	30
Saturday 6 September	'Village Life' Film	17.30	Elham Village Hall	See Poster	4/48
Friday 24 October	EVHA Autumn Quiz	19.00	Elham Village Hall	n/a	
Friday 31 October	Halloween Disco and Parade	n/a	Elham Village Hall	n/a	

## ***Welcome to the Elham Newsletter - July 2025***

There certainly seemed to be a lot going on in Elham last month... take a look at the pictures in this edition! July brings yet more village activities— have a good look at 'What's On' and make a note in your calendar of anything that takes your fancy.

Next month, August, there is no Elham Newsletter - this is the month we collect payments from our advertisers that enable the Elham Newsletter to exist and we are extremely grateful for our advertisers' continuing support, as well as the monthly effort made by our team of volunteer distributors. If you have photographs that you would like to share, please do send them to [elhamnewsletter@gmail.com](mailto:elhamnewsletter@gmail.com), or indeed any item of interest or concern. This is your community's newsletter- it is only as good as YOU make it!

Renee Bull Editor

## ***Contents***

Pages 2 / 3	Who's who and what's where / EVHA BACS details / Editor's note / what's on in Elham / Contents
Pages 4 / 5 / 6 / 7	Elham Village Hall Association News / Social Snacks and Cinema / 130 club / Volunteers Day
Pages 8 / 9 / 10/11/ 44	Elham Parish Council
Page 12 / 13	Elham Primary School / Twinning / Village Forum
Page 14	District Council / Volunteer Award
Pages 15 /16	Kent County Council / Lyminge Parish on Parade / Rhodes Minnis BBQ
Page 17	Elham Historical Society / Age UK
Page 18	Know Your Neighbour
Pages 19 / 23	Elham Gardening Society
Pages 20 / 21 / 22	Church pages / Wordsearch
Page 24	Friends of St Mary's Jazz on the Lawn
Page 25	Elham Summer Food and Craft Festival
Page 26	Elham Community Shed
Pages 27 / 28	Cantores / AK Healthcare / Bee Wise
Pages 29 / 30	Elham Cricket / Elham Walkers / Table tennis / Elham Sports Club
Pages 31 - 47	Looking After You and Your Family's Wellbeing / Looking After Your Home and Your Garden / Elham Services
Page 48	Village Life



## Elham Village Hall Association News

**The perfect venue for every occasion**  
**ELHAM VILLAGE HALL**



*Situated in the beautiful Elham Valley, our modern village hall offers convenient and flexible facilities. Ideal for small or large occasions, happy or sad, from business meetings to christenings, wakes, birthday parties and weddings.*

**Approved by Kent County Council as a venue for the solemnisation of civil marriages and the formation of civil partnerships.**

Take a look at our website: [www.elhamvillagehall.co.uk](http://www.elhamvillagehall.co.uk)

Contact **Maggie Tappenden** telephone 01303 862467 mobile 0774 6790 618 for further information.

[bookingsecretary.evha@gmail.com](mailto:bookingsecretary.evha@gmail.com)

**Social, Snacks and Cinema**  
**Elham Village Hall 7.30pm on the first Wednesday of the month.**

Entry on the door. £5.00 for EVHA friends.

Pay Bar available from 7.00pm



### **Social Snacks and Cinema** **Wednesday 2<sup>nd</sup> July.**

Come along **T**o the Peggy Pike Room at El**H**am Village **E** Hall and see wha**T** it's all about! Come and meet some new people, socialise, **HavE** a drink and a natter. There will be refreshments available and a **I**Ovely film to see. Ent**RY**

is just £5.00 **O**n the door and everyone is welcome. Under the terms of our licence we are unable to publish the name of the **F**ilm; how**EV**er we hop**E** you can wo**R**k it out, it's quite eas**Y**! **T**here will be no **S**ocial Snacks and **Ci**Nema in August but we will resume a **G**ain on the first Wednesday in September.

### **VILLAGE LIFE**

**Saturday 6<sup>th</sup> September 7.30pm at Elham Village Hall**  
**BBQ and Bar open from 5.30pm**

Local resident Nigel Woodley's film 'Village Life' will be screened in the main hall on Saturday 6<sup>th</sup> September. It was filmed last summer in and around Elham and features one or two Elham people. This will be a free entry event but we will have a pay bar and BBQ from 5.30pm so you won't get thirsty or hungry!

The film is suitable for everyone and it is hoped that many of you will come along. See the poster on the back cover and please put a reminder in your diary as there is no August newsletter to prompt you!



### VE80 Spitfires

I'm sure everyone has seen the VE80 spitfires on the Elham sign- they created quite a stir and certainly helped promote our VE commemorations.

The question of what to do with them has been discussed and several people have enquired about taking ownership.

We have decided to auction them at the next Village Hall Autumn Quiz which will take place on Friday 24<sup>th</sup> October. However, if you would like to put in an early bid please email the newsletter editor

[elhamnewsletter@gmail.com](mailto:elhamnewsletter@gmail.com)

and we will ensure your bid is part of the auction even if you are not attending.

There are two spitfires, one facing left, the other right- see pics. All monies raised will go to the Royal British Legion.



### All things French at the Elham Friendship Lunch

The June meeting of Elham Friendship Lunch Club took on a French flavour when Anne Leva spoke of the new Elham Ambleteuse Twinning Association. She was joined by Church Walk resident Alex Siggers who reminisced about his 18 years living in France.



After the usual lunch of home-made soups, cheese and cake, members relaxed over tea and coffee while Anne spoke briefly of Elham's first twinning link with the Vallee de la Course in northern France which ended some 10 years ago; then explained how the new twinning link with Ambleteuse came about and how we all hope it will develop. (You can read further details in the Twinning Update on page 13)



Alex then spoke about his and his wife's years in France, renovating a dilapidated house, getting to know and making friends with their neighbours, (avoiding talking about politics!) and generally making the most of their expat lives.



Questions from members brought up additional topics and cleared up some misconceptions: French food may be delicious but not all French know how to cook well; the French can be more philosophical and the British more practical in their approach to problems.

The next Friendship Lunch will take place on Thursday 17 July, hopefully returning to the newly renovated St Mary's Hall.

*Anne Leva*



# Elham Village Hall Association News

**ELHAM VILLAGE HALL 130 CLUB**  
You've got to be in it to win it!



**EVH**

12 monthly draws.  
£12.00pa for each number.  
\*Three prizes each month\*.  
Contact Martin Turner for an application form.  
840804/ jgt867@aol.com

The 130 Club is run by Elham Village Hall Association Ltd. Reg Charity No: 1024757

## **130 CLUB Winners JUNE DRAW**

- 1<sup>st</sup> Prize (£32) Number 54 Paul Wilkin  
2<sup>nd</sup> Prize (£20) Number 69 Sam Martin  
3<sup>rd</sup> Prize (£13) Number 121 Michael Stanford-Tuck

please contact Martin Turner  
01303 840804 /jgt867@aol.com

## **Elham Village Hall 130 Club**

### **An invitation to join Elham Village Hall 130 Club**

The Elham Village Hall Association raises valuable funds every year for the running of Elham Village Hall. Money raised is used to maintain and improve the hall for the benefit of all users.

**During the past year we have distributed £780 in prizes and raised a similar amount for the hall.**

By joining the 130 Club you can help ensure Elham Village Hall remains open as a resource for all the residents in our community; as well as having a chance to win cash prizes every month!

The Elham Village Hall 130 Club is a private lottery and is open to all residents from Elham and the surrounding area, their family and friends. As a private lottery you have to be invited to join, you will be allocated a number and your numbers are not transferable. **You have to be 16 or over to join.** Each month there is a draw for 50% of the income. This amount is divided between 3 lucky winners on the following basis:

For example, if we have 130 numbers the income for that month will be £130.

50% will be used as the prize fund e.g., £65 split into three prizes assuming that there are 130 numbers.

- The 1st prize will be £32
- The 2nd prize will be £20
- The third prize will be £13

You may buy more than one number per month. If at any time there is less than 130 numbers sold then the prize fund will be proportionally reduced. If there are more than 130 numbers sold then the prize fund will be proportionally increased.

We would ask that you pay for 12 months in advance (£12 per number). The more people who buy a subscription – the higher the prize money!

Interested? If so, please read the attached rules and complete the form with your details. You will then be allocated a membership number for every £1 subscribed.

### **Elham Village Hall 130 Club Rules**

1. The object of the Club is to raise funds for Elham Village Hall.
2. The Club will commence on a date to be advised by the Elham Village Hall Association (once sufficient numbers have been issued)
3. The Club will be run by the Elham Village Hall Association. A member of the Management Committee will administer the Club and allocate numbers
4. The Club is open to all residents of Elham and the surrounding area, their family and friends.
5. Members must be 16 or over.
6. Members must fill in an application form (attached).
7. The entry fee is £1 per month per number. At least 12 months' entry fees are to be paid in advance. Payments should be paid by cheque made payable to **Elham Village Hall Association 100 Club**. You can also **transfer the money on-line** (account details on application form)
8. Members may have more than one number.
9. The draw will take place each month by the Chair of the Elham Village Management Committee.
10. Prize money will be sent to the winners and names will be posted in the Elham Newsletter. If the winnings are not claimed for 6 months, they will be placed into the Elham Village Hall Association funds.
11. The regular monthly prize fund will be 50% of the monthly Income.  
The first prize will always be equal to 25% of the total funds raised for that month; the second prize will be 15% and the third prize 10%.  
50% of all money raised, from the Elham Village Hall 130 Club, will go towards the running costs of Elham Village Hall.
12. A register will be kept recording the name and address of each member, the number(s) allocated to them and the subscriptions received.
13. Unless otherwise advised, a member will be deemed to have left the Club if his or her renewal of subscription remains unpaid for a period of one month



## ***ELHAM VILLAGE HALL NEWS***



### **Application Form**

**(Applicants must be over 16 years old)**

Name: \_\_\_\_\_

Address: \_\_\_\_\_

\_\_\_\_\_

\_\_\_\_\_

Post Code: \_\_\_\_\_

Telephone: \_\_\_\_\_

Email: \_\_\_\_\_

Quantity of numbers required \_\_\_\_\_ at £1 per month - minimum period of 12 months which equals £12 per number.

Total Payment enclosed: £ \_\_\_\_\_ I have made an online payment Yes/No

Signed: \_\_\_\_\_

**Please ensure you fill in all your details above or we cannot allocate you a number in the Elham Village Hall 130 Club.**

**By signing this form, you are declaring that you have received and accepted the rules of The Elham Village Hall 130 Club**

**Please make your cheque payable to: Elham Village Hall Association 100 CLUB**

**Please find below account details if you would prefer to make an online payment:**

**Account Name: Elham Village Hall Association 100 Club**

**Sort Code: 30-93-34**

**Account Number: 52257560**

**Please use your NAME as a reference**

**Please return this form, with your payment, to Martin Turner, Little Ginny, Exted Hill, Elham, Canterbury, Kent CT4 6UD. You can also leave the form at Elham Village Stores (there is a box at the front of the shop). Please inform us of any changes to your details.**



## LOCAL NEWS

Full minutes can be seen on the Parish Council website and on the notice board by the Rose and Crown bus stop. Editor



### ELHAM PARISH COUNCIL

***Your Parish Council and their areas of responsibility***



Kevin Lamb  
Chair of PC  
01303 840215



Christeen Chapman  
Deputy Chair of PC,  
Planning lead  
07973765056



Geoff Clements  
Tree warden  
01303 840255



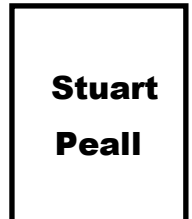
Brian Swan  
Member of PC  
01303 840006



Kevin Allen  
Member of PC  
Highways lead  
01303 862087



Chris Francis  
Member of PC  
01303 840502



**Stuart  
Peall**

Member of PC  
07956110887

### **Unratified Minutes of the Ordinary meeting of the Parish Council on 2<sup>nd</sup> June 2025**

**Those Present: Councillors: Cllr K Lamb (Chair) and C Chapman (Vice Chair) B Swan, G Clements, C Francis, the Clerk, County Councillor Hespe, District Councillor Godfrey and 1 member of the public. Apologies: K Allen and S Peall.**

**To declare any disclosable pecuniary interests (DPI), other significant Interests (SI's) or a voluntary interest (VI) relating to items on the agenda. No Interests were declared.**

**Declaration of the Vice Chair – following the election of Vice Chair, Minute 78.25, Cllr Chapman signed the Acceptance of Office form.**

**Public Contribution - No contributions.**

#### **Minutes of meeting.**

**The minutes of the Annual meeting of the Parish Council held on 12<sup>th</sup> May 2025 were approved with the exception of a spelling error in 78.25, the clerk will amend for the Chair of the Ordinary meeting in July to signed as a true record.**

**It was agreed to defer approval of minutes from the C&A Committee meeting until the next Ordinary meeting of the Parish Council due to the Clerk being on leave and only just receiving notes of meeting.**

**It was agreed to bring forward agenda item 117.25. District Councillor and County Councillors reports.**

#### **Chairmans Report**

**Following the recent use of the defibrillator, it was requested that an agenda item be included in a future meeting to discuss the potential installation of defibrillators in North Elham and Ottinge. Additionally, it was suggested that a map detailing defibrillator location be published in the newsletter and displayed on noticeboards for public awareness. The Clerk will action this accordingly.**

#### **Committees**

**The following Councillors were appointment to the below committees:**

**Staffing Committee - Cllr Lamb, Cllr Swan and Cllr Chapman**

**C&A Committee - Cllr Lamb, Cllr Chapman, Cllr Swan and Cllr Clements.**

**Wellbeing Advisory Committee - it was discussed and agreed that the wellbeing committee would become a working party. Cllr Chapman would be the Lead for the Working Group.**

**It was agreed that Cllr Allen would continue as the Highways representative.**

**It was agreed the Cllr Francis would be the representative for the Environmental Working Group.**



## LOCAL NEWS

### Locations of Defibrillators in Elham

In an emergency, **always call 999**

The operator will guide you to the nearest defibrillator and provide you with the code needed to access the defibrillator.



#### 1. Elham Village Hall, High Street, Elham CT4 6SX

located outside the main entrance to the Village Hall – available 24 hours / 7 days a week.  
what3words /// bookshop. justifies. Jaundice

#### 2. Elham Parish Council BT Box, High Street, Elham CT4 6TD

located in the red BT telephone box - available 24 hours / 7 days a week. what3words  
///commuting. tiptoes. lawn

#### 3. Elham Primary School, Vicarage Lane Elham CT4 6TT

located outside the main entrance to the Village Hall – available 24 hours / 7 days a week.  
what3words ///empty. drumbeat. stepping



## LOCAL NEWS



### Outside Bodies

The following Councillors were appointment as representative on outside bodies:

*KALC Shepway Area Committee* - Cllr Clements.

*Folkestone and Hythe District Council Planning User Group* - Cllr Chapman.

*Elham Community Trust* – Clerk to email E.C.T to ascertain when their Annual meeting is to be held.

*Elham and Acrise Samaritan Fund* – Cllr Clements.

*Elham Village Hall* – Cllr Francis.

*Play for Elham* – Cllr Swan.

*Assistant Flood Warden* – Cllr Francis.

*Little Stour and Nailbourne River Group* – Cllr Francis.

*Tree Warden* – Cllr Clements

### Finance

The Council reviewed the 2024-2025 Internal Auditor Report and agreed no actions.

The Council reviewed and approved the unaudited accounts for 2024-2025.

The Council reviewed and approved the effectiveness of the system of internal control, this was signed by the Chair and the Clerk at the time of the meeting and witnessed by all present.

The Council approved the Annual Governance Statement for 2024-2025, Section 1 of the AGAR for the year ending 31st March 2024, this was signed by the Chair and the Clerk at the time of the meeting and witnessed by all present.

The Council approved the Accounting Statements for 2024-2025, Section 2 of the Agar for year ending 31st March 2025. Signed prior to the meeting by the Clerk and signed by the Chair at the time of the meeting and witnessed by all those present.

The Council approved the supporting Bank Reconciliation as of 31st March 2025, this was signed by the Chair and the Clerk at the time of the meeting and witnessed by all present.

The Council approved the explanation of the significant variations from 2023-24 to this year 2024-25, this was signed by the Chair and the Clerk at the time of the meeting and witnessed by all present.

The dates set for the period for the exercise of public rights (4<sup>th</sup> June 2024 – 15th July 2025) were agreed.

The Accounts from May 2025 were a true record and were signed by the Chairman of the meeting.

The Bank Reconciliation from May 2025 was a true record and was signed by the Chairman of the meeting.

The virement of £654.44 from ringfenced VE Day to VE Day was agreed. This is to cover the expenditure for the VE Day 80 celebrations that took place within the Parish.

The May invoices were agreed, and payments were approved. *Please see appendix 2.*

### Financial Regulations

It was agreed that a working party would convene to review the 2025 model Financial Regulations. Any proposed amendments will be presented to the full council for consideration.

### Planning

Applications received were noted and comments agreed:

Planning Application	Address	Description	Comments / Views
25/0931/FH	Old Mount Farm, Mount Hill, Rhodes Minnis, Canterbury, Kent CT4 6YD	Detached dwelling house following demolition of redundant farm-house.	No Objection.
25/0913/FH	The Old barn, Grimsacre Farm, Canterbury Road, North Elham, Elham, Canterbury, Kent, CT4 6NG	Twin stable and tack room for the keeping of horses in association with the old barn.	No Objection.



## **LOCAL NEWS**

Applications were received since the agenda was issued and comments agreed.

Planning Application	Address	Description	Comments / Views
25/0924 /FH	Annexe, The Old Vicarage, Vicarage Lane, Elham, CT4 6TT.	Listed Building Consent for the insertion of 2no windows.	No Objection.
25/0921/ FH	Cockpit Cottage, Cock Lane, Elham, Canterbury, Kent CT4 6TL	Change of use from residential (class C3) to guest annex (class C1).	No Objection.

The following decisions were received from Folkestone and Hythe District Council:

Planning Application	Address	Description	Decision Received
25/0373/FH	Vale View, High Street, Elham, CT4 6SX	Construction of new single storey rear/side extension and two storey rear extension.	Approved with conditions.
25/0420/FH & 25/0444/FH	River Cottage, Wingmore, Elham, Canterbury, Kent CT4 6LT	Demolition of the porch and flue at the rear of the building. Proposed ground and first floor extension to the rear of the property with a hipped gable roof. Minor alterations to the existing landscaping	Approved with conditions.
25/0439/FH	Stoneacre, Park Gate Hill, Elham, CT4 6NF	Erection of replacement dwelling and detached garage with retaining wall and associated hardstanding	Refused.
25/0557/FH	Elham Manor, The Row, Elham CT4 6UL	Listed building consent for replacement of wooden sash frames with replica accoya hardwood which will be painted.	Approved with conditions.

### **Churchwall**

Given the time elapsed since receiving the quotation for the works on the section of the church wall, and with the specification now confirmed following site meetings, it was agreed to write to the contractor to obtain a fixed price. The Parish Council cannot accommodate cost variances once the works are completed.

Following the consideration recorded in Minute 90.25 (1), the draft response to a resident of one of the affected properties was approved and will be sent by the Clerk.

**Burial Ground** - The memorial application for RPG 359 was reviewed and agreed.

**The Gore** - The Clerk gave an update on the planning conditions application (24/0540/FH/CON), it was agreed to remove condition 6 (disposal of foul water) from the current application to allow a decision for conditions 5 (external lighting), 8 (biodiversity) & 10 (soft landscaping) of planning permission 23/0074/FH.



## **LOCAL NEWS**

### **Wellbeing**

**Place of Welcome** – This initiative has been temporarily paused until the autumn. The group will conduct further discussions regarding the location and how best to utilise volunteers before proceeding.



**Fundraising for MIND** – The Wellbeing Group is in the planning stages of organising a fundraising event in support of MIND. Further updates will be shared as arrangements progress.

**Environment Group** - Further to the request for signage indicating the herb garden's location, the Clerk will respond to the Environment Group with suggestions, including the potential relocation of the noticeboard in King George V Park, which could display a layout of the area.

**Twinning** - The agreement for retention of ringfenced funds for the twinning committee was signed by the Chair of the meeting and the Twinning Committee Chair, Anne Leva.

**Correspondence** - The full schedule of correspondence is available within the minutes of the Ordinary

### **Date of next meeting and Close**

The next meeting will be the Ordinary meeting of the Parish Council on Monday 7<sup>th</sup> July 2025 at 7.30pm.

There being no further business the meeting closed at 9.26pm.

## **ELHAM CHURCH OF ENGLAND PRIMARY SCHOOL**

### **A New Headteacher**

We are very pleased to be able to announce that the Governors have appointed Mr Joe Magliocco as the new Headteacher of Elham Primary School. Mr Magliocco is currently Assistant Head of Ellington Infants School in Ramsgate. He has experience across the full Primary School age range, is a Specialist in Early Years and has a particular interest in Maths. His strong Christian values are very evident, and he engaged and connected well with children, staff and governors alike during his visits to the school. We believe that he is the charismatic and visionary leader our school needs to take it into the coming years.



We look forward to welcoming Mr Magliocco for the start of the new academic year in September.

### **Staff Leaving**

At the end of this term, we will sadly be saying goodbye to Miss Waters and Miss Shepherd, who have been such valuable teachers in key stage 1 over many years, and to Mrs Short who has been at Elham for 25 years, for much of the time not only as the main teacher in year 6 but also as Assistant Head. Mrs Short has also been an exemplary Acting Headteacher over the last year. We will miss all three greatly. We thank them for all that they have contributed to our school and wish them well for the future.

### **Class Restructure**

The Governors have taken this opportunity to review the structure of the school in order to be sure that we can weather the inevitable financial pressures in years to come. Most primary schools have either done this in the past year or so or are planning to in the coming year.

As a result, from September we will have two classes in Key Stage 1 [Years R and 1, and Year 2] and two classes in Key Stage 2 [Years 3 and 4, and Years 5 and 6].

This new structure is one that we have seen before, and which has worked very well for the children on previous occasions. Critically the character and family atmosphere that makes Elham Primary School so unique has always continued, with the children receiving excellent teaching, and enjoying their learning and play as much as ever. We are therefore confident that with these class changes, and with the appointment of Mr Magliocco, the school that we all know, and love will continue to go from strength to strength.

Trevor Gasson



### SCHOOL IS FORGING TWINNING LINKS



Creating new links between Elham and Ambleteuse is progressing, slowly in some areas, but the schools in Elham and Ambleteuse have embraced the idea with enthusiasm, as described below by Trevor and Jenny Gasson, representing the school's group in our twinning association.

"Elham school is progressing with its links with the school in Ambleteuse. Following initial email contact between Trevor Gasson, Co-Chair of Governors at Elham, and Serge Legreoux, an ex-headteacher in France who is supporting the process, a video call was arranged to include the Headteacher at Ambleteuse and the Acting Head at Elham.

"The French contingent speak good English and the amicable meeting resulted in agreement to begin a letter exchange between the older pupils starting during the next academic year.

"Both schools feel there is no need to rush the process, but that it will be a great adventure. M. Legreoux hopes to visit Elham with M. Totain, the Ambleteuse Headteacher, in September."

Anne Leva, chair of the Elham Twinning Association, reported at the last committee meeting that we are waiting for the French to give us names and contact details of people in Ambleteuse willing to represent various interest groups, who could correspond with their counterpart in Elham. We have everything in place here. The groups so far are the school, the Gardening Society, the Historical Society, the Environment Group, the choir/music, the artists, the Petanque Club, and the Walking Group. Nothing much will happen in July and August, but we hope to bring progress news in September.

Advance warning: new regulations are coming in for crossing the Channel for all with a non EU passport. **ETIAS (European Travel Information and Authorisation System)** is a travel authorisation due to come in at the end of 2026. Your ETIAS will cost £7 and will be valid for three years. Application will be online. All information is available on various official websites such as ETIAS.com

AL

### Village Forum – a view expressed

You may recall that article I wrote about concerns of the whole village? You did 'spike' it as you were concerned that it might upset several people. Actually I do fully understand and agree

However it seems by now that in some ways I was correct

After all the Estates Office has gone and a Londis will replace

Abbots Fireside has shut and it appears that planning may be accepted to change (back) into cottages, thus damaging the insides and also outside towards our High Street. The only way that this restaurant & hotel would work and make profits must be to really upgrade with proper well-known chef.

As ever the cafe is not visible for visitors due to cars parked in front; residents there are permitted, but really?

..... And then it looks likely that the shop will shut. Frankly I'm not really surprised as too many of our residents prefer to drive to Barham.....

Further a real shame that the Residents Association was created - with a creation meeting attended by hundreds - but did later fall away.

Of course, there is quite a lot of focus around the hall, which is good, except it is not visible to village visitors who look for somewhere to eat and find just one place.

On Sunday I was told that the King's Arms dislikes the market as it blocks up *their* "car park" area.

I'll be forwarding this one to our village council. All best JOHN COPSEY

### **SURELY THE BEST WE CAN BE** - a song written at the songwriting course at Elham Village Hall.

When did our excitement for everything new fade to a wan world of woe?

It is too big to hold in our head or is it we are just getting slow?

We swim in a sea full of fury and fear with no where to turn to for aid

Then why not start small, see what strings we can pull, by taking a new look at life?

Chorus : Pri-or-i-ty...why can't we see?

Improving their life is improving our life

Creating community, living in unity

Sharing and giving not grabbing and holding

Surely the best we can be.



We cannot put right all that's wrong in the world, but what we can do should be done

If we just think it through there is masses to do, not take and to hoard just for us.

Some have talents and skill waiting to share, we can all at least lend an ear.

Don't fear getting involved, show that you care, while taking a fresh look at life.

Chorus: Pri-or-i-ty... why can't we see?

Living in unity, develop community

Daring to share, risking to care

Its better than taking, better than faking

Being the best we can be.

Pri-or-i-ty... why can't we see?

Get into our head before we are dead

Building society should be our priority

Why can't we see how things can be?

Getting involved can be fun... getting involved can be fun.



## ***District Councillor's News for July 2025***



### **Wood burners**

Wood burning stoves are an acknowledged source of particulate pollution. Research by University College London has compiled national data which shows that, within our district, Hythe has a particularly high concentration of wood burning stoves. This has disturbed some local residents. The council has now posted guidance on the Folkestone-Hythe website. If you are thinking of installing a wood burner, we hope you will find this useful.

### **Recycling**

The next phase of the 'raise the rate' campaign will be focusing on paper and card. Amongst other things, residents will be offered the opportunity to purchase a second box at a reduced rate. I was also pleased to be one of the judges for the Great British Spring Clean poster competition for young people. The winning entry will be displayed shortly on two local refuse collection vehicles.

### **Cliff Falls**

Work continues on repairing the cliff falls along Remembrance Road in Folkestone. Detailed plans are now being prepared following geological studies. Accessing the cliff face is not at all easy and some trees will have to be removed as they sway in high winds and their roots weaken the cliff face.

### **Love Your Beach**

The warmer summer weather attracts large numbers of visitors to the beaches across the district. Coping with sudden increases in the amount of litter is a considerable challenge. As part of the 'love your beach' campaign there will be additional bins in hot spots, more crews, enhanced equipment and additional signage. You may also see two e bike electric vehicles being deployed to help with the regular emptying of bins along the seaside promenade. As well as being environmentally friendly, the bikes can access places which can't be reached by other vehicles.

### **Lower Leas Park, Folkestone**

The play equipment in the award-winning Lower Leas Park is 24 years old and is now beyond repair. The park is hugely popular and much appreciated by residents from all over the district. Following a consultation which attracted over 1000 responses, it has been decided to refurbish the play area. This will cost an estimated £750,000, part of which will come from payments received from new housing developments.

### **Geopark**

Although it is not widely recognised, the chalk landscape of which we are part is internationally significant in terms of geology, ecology and cultural history. One way in which this is being celebrated is through display boards. The first two have just been erected – one at Farthing Corner and the other on the East Cliff in Folkestone. The East Cliff board focuses on the Mega Flood which separated Britain from mainland Europe some 450,000 years ago. This story has unfolded recently by analysing the strata beneath the Straits of Dover when the Channel Tunnel was constructed. This event which made Britain an island has been fundamental in shaping our history and deserves to be celebrated much more widely. We have a great story to tell!

**Cllr Stephen Scoffham**

### ***Volunteer Award***

In my capacity as Chair of Elham Village Hall Association, I nominated Renee Bull for an Excellence in Volunteering Award. The awards are sponsored by Folkestone and Hythe District Councils who aim to recognise voluntary contributions made by those who make a difference to their community through their effort and industry.

As editor of our newsletter Renee spends many hours each month producing the Elham Newsletter - it is a solitary task, requiring much patience, creativity and, it has to be said, a lot of fiddling about to fit in all contributions. I believe the result, month after month, is an excellent publication on which many in our community rely.

Renee has managed to grow the content of the newsletter over the last six years, securing advertisers, finding the most economical printers, and, by adding copy, appealing to different sections of our community. I think she was very worthy of this nomination and I was delighted when she was shortlisted in the 'Individual Achievement' category at a packed ceremony on 5<sup>th</sup> June.

Typical of Renee she was reluctant to publicise this achievement but I managed to take a picture of her with her certificate. Well done Renee!



**Jan Stanyon**



### **Kent County Councillor Update Report, 9 June 2025**

Following the County Council elections on 1 May 2025, I now have the great honour of representing the Elham Valley division on the County Council. It is a large area of some 20,000 people and 8,000 homes, with some of the loveliest countryside and villages in the South East. Firstly, may I offer my thanks to outgoing County Councillor Susan Carey, who many readers will recognise as a hard-working champion of our beautiful area.



Rest assured, I will endeavour at all times to preserve all that is best about the area, whilst seeking to ensure that any development is sensitive and fits with your neighbourhood plans. My priorities will always be Elham Valley, but I have also been given additional County-wide responsibilities, too. I am Deputy Cabinet Member for Finance and Cross-Cabinet Activity, and I will be Chairman of the Policy and Resources Committee.

The challenges for the new Reform UK administration in KCC are enormous. We have inherited a Council debt from the outgoing Conservative administration of more than £700 million, daily debt charges of £84,000 and there are significant 'in-year' savings to be made totalling tens of millions of pounds. But there is real determination to get the best for Kent's residents and businesses, achieve value for money, and 'do things differently' if it makes sense financially and in terms of service delivery. We have a number of proposals to make life a little better in Kent, and these will be announced over time, but we will of course prioritise the continued delivery of our statutory core services of Adult Social Care, Special Educational Needs, Highways and Education.

#### **Local Elections**

During the local elections in May 2025, which led to Reform UK taking control at County Hall, we pledged to address the **potholes**. I can say with confidence that we will be making a positive announcement shortly. We pledged to address **wasteful spending**, and to that effect we have established a team to ensure that taxpayer funding is spent wisely and to make savings wherever we can. We pledged to **help our communities** – our first action was to cut Councillor allowances and re-direct the money saved into the Community Grants programme for the voluntary sector. We pledged to **put Kent residents first** – we have scrapped driving lessons for asylum seekers and are working to stop funding 'English as a second language' classes.

Apart from inheriting a challenging budget, another 'big issue' on the horizon is **local government review**, with the prospect of the government potentially merging KCC and the district councils and dividing the County into three or four Unitary authorities. The new Leader of KCC, Linden Kemkaran, has stated that she is not convinced of the merits of splitting the County and has asked central government for more time for Kent to come up with its plans. She is determined that any new structures should have the backing of the public and not be simply 'done to Kent'.

In forthcoming months, Kent County Council will outline its position on a number of matters that will be of interest to residents of Elham Valley, including on the proliferation of proposals for excessively **large solar farms**; achieving good **community benefits** on the back of housing developments; the opportunities that should be presented through increasing **disposals of KCC owned properties**, and the opportunities for **procurement** to benefit local small businesses rather than the large, multi-nationals.

#### **Small Member Grants**

Let me know if you have a project, event or group activity which you would like to be considered for a small grant from KCC. This is for voluntary organisations with a bank account; usually constituted. Recipients could be clubs, societies, voluntary groups, church groups and not-for-profit organisations. Usual size of a grant is £250 to £500. It could even fund small highways projects, such as lowering kerbs for wheelchairs or installing a new road sign. Should take 12 weeks maximum from you contacting me to us getting the money out of the door.

#### **Highways Improvement Plans**

KCC is encouraging Parish and Town Councils to produce Highways Improvement Plans. These plans will prioritise capital works in those areas. Those areas with plans are more likely to receive funding.

#### **Adult Social Care Prevention Framework**

A consultation has commenced on a new Framework, which was produced with partner organisations. The aim is to ensure that older people can stay healthy and independent as long as possible. Comments are welcomed before 14 July 2025 on [kent.gov.uk/preventionframework](https://kent.gov.uk/preventionframework). ... /cont



## .../cont **Kent County Councillor Update Report, 9 June 2025**

### Potential Port Delays

The EU Entry/Exit System is likely to come in to force at the Port of Dover in October or November 2025. This new scheme will require travellers to have biometric data eg face scanning and fingerprints, taken at the Port of Dover before French customs officials will allow travellers to cross the Channel. Although much of the information that will be required will be able to be uploaded from home electronically prior to departure, the Kent and Medway Resilience Forum fears that there may be significant delays at Dover. This may therefore necessitate Operation Brock being put in place, possibly for a lengthy period, as the Roundhill Tunnels can not be allowed to hold stationary traffic. Some time in 2026, the EU will introduce a further requirement known as ETIAS, which is effectively a visa costing approx. £7, which will be required for each trip to the EU.



### Historic England Local Heritage Hub

Historic England has launched the 'Local Heritage Hub', which includes pages for every county, district, city, major town and national park in England. It allows users to explore aerial photos, listed buildings, archive material, videos, podcasts and local stories; all in one place. The pages can be accessed on [historicengland.org.uk/local](https://historicengland.org.uk/local)

### Carers

During Carers Week (9-15 June 2025), KCC is highlighting the vital role of carers in Kent and highlighting the support that is available to carers in East Kent. Visit 'Support for Carers – Kent County Council' online to find links to

Carers Support East Kent / 'Imago' for young carers / Short breaks provided by 'Crossroads'.

### Let's Talk Kent

KCC has a portal through which all major consultations will be posted to seek the public's views and comments. The public can sign up to be a consultee. Currently, 60,000 people have signed up to 'Let's Talk Kent', which now covers consultations on local schemes, county-wide budgetary proposals, priorities and savings proposals, public rights of way changes and highways matters.

Christopher Hespe Kent County Council Member for Elham Valley

**LYMINGE PARISH**

COME & JOIN US FOR OUR  
**SUMMER PARISH ON PARADE**

**FRIDAY 18 JULY,  
SATURDAY 19 JULY AND  
SUNDAY 20 JULY 2025**

Jubilee Field Fri/Sat and Tayne Field Sunday

**FREE ENTRY**

*Events*

Bouncy Castle, Silent Disco, Live Music, Local Bands, Stalls, Food Vans, Arts & Crafts, and much more. Additionally on Sunday 20 July there is a Boot Fair!

For more information email:  
[clerk@lymingeparishcouncil.org.uk](mailto:clerk@lymingeparishcouncil.org.uk)

**RHODES MINNIS CAT SANCTUARY**  
Registered Charity 262245  
01303 862243 [rminniscats@gmail.com](mailto:rminniscats@gmail.com)

**OPEN DAY**

**SUNDAY 20 JULY 11AM – 4PM**  
\*AT SEATHWAITE, GREEN LANE, RHODES  
MINNIS CT4 6XU\*

**THE GARDEN PARTY WITH ALL THE CATS**

- HOMEMADE CAKES AND SAVOURIES
- OUR FAMOUS STRAWBERRY MERINGUES
- TEAS, COFFEES AND REFRESHMENTS ALL DAY
- BARBEQUE – PLANTS – TOMBOLA
- HAMPER AND BARROW OF BOOZE RAFFLES – CRAFT STALLS
- COLLECTION OF TEDDY BEARS FOR SALE

ADMISSION BY DONATION, CASH OR CAT FOOD

PLEASE BRING SOME CASH  
NOT ALL STALLS CAN TAKE CARDS





**Pilgrims Hospices**

# Sunflower MEMORIES 2025

**Saturday 12 July**

*Who will you remember this summer?*

Dedicate a beautiful sunflower to someone you love, and join us to relive your memories with music and refreshments at the Sunflower Days.

 [www.pilgrimshospices.org/sunflowers](http://www.pilgrimshospices.org/sunflowers)  
[sunflowers@pilgrimshospices.org](mailto:sunflowers@pilgrimshospices.org) 01227 782 062

Registered charity no 293968 and as a company in England no 2000560

Names on sunflowers: Evelyn, Henry, James, Emma, Graham, Charles



### Interested in local Elham History?


Then come and join us at the

### Elham Historical Society for:

- Interesting local historical talks
- Trips & outings
- Social events

Contact us via email: [elhamhistorical@outlook.com](mailto:elhamhistorical@outlook.com)

Visit our website: <http://www.elhamhistorical.org>



**meals on wheels™**  
*more than just a meal*



Delicious Hot Meals delivered to your door


Serving Hythe, Lydinge, Ashford & surrounding areas.

A two-course meal using local ingredients – hot, nutritious, and ready to eat.

No prep needed – just enjoy!  
Only £9.00 per delivery

**For more details and a menu, contact us today!**

 [admin@ageukhla.org.uk](mailto:admin@ageukhla.org.uk)  01303 269602

 Hythe, Lydinge & Ashford  
**ageUK**

Registered charity number 1125274. Company number 6589817. © Age UK Hythe, Lydinge and Ashford 2025.



### ***Smile Please!***

I encountered this little fellow among the buttercups in our garden (in the middle of the afternoon) the other day.

Peter Morgan

### ***Looking for something to watch on TV?***

If you happen to have Netflix- check out a documentary called The Quilters. It is an award-winning short documentary (only 33mins). It is extremely powerful!

In fact, I would say it's the most memorable programme I have watched in a long time. Do you have a recommendation you would like to share? Let us know.

Jan Stanyon



## KNOW YOUR NEIGHBOUR

**Pippa Hope** is known for her creativity, demonstrated by the posters she designs for a variety of Elham Groups. She agreed to feature as the neighbour we can get to know this month.



1. How long have you been part of the Elham Community?	My grandparents lived in Boyke Lane and we visited them weekly, so that was my first link to Elham 60 years ago. My husband and I moved to Rhodes Minnis in Elham Parish in 1993. My children were born and they attended Elham Primary School. My home since 2014 has been in Park Lane, with Ed.
2. What do you consider your greatest achievement to date?	I have three. Surviving 60 years I consider a great achievement. Given my antics in my youth, a long life was not always a given, I have dodged a few bullets!  Raising two children (now wonderful young adults) is also one of my greatest achievements.  And finally (despite a sense of imposter syndrome) having a piece of my artwork in this year's Summer Exhibition at the Royal Academy of Art.
3. When were you happiest?	That has to be right now: living with Ed, my freedom to create art, the woodland, the beautiful natural environment and the supportive community in which I live. I feel blessed.
4. What did you want to be when you were growing up?	I wanted to be a time-traveller. I think TV programmes back in the day may have fuelled this wish.
5. What keeps you awake at night?	Not much. The darkest hour is just before dawn. That's when a few demons creep in.
6. What is the most important lesson life has taught you?	Play nicely, be kind, it pays off in the long-run.
7. Which village event do you most look forward to?	The Christmas Farmers' Market, which seems to be a popular response to this question. Ed and I love running the hot chestnut stall with Kev and Angie Scott. We have done this for a good number of years and we love the feedback we get from the people in the market.
8. Tell us three activities that keep you busy?	-our business selling wild flower seeds for bees and butterflies -seeing friends and family is really important -creating stuff
9. What one change in the village would improve your life?	Honestly? I would move the football pitch and put back the cricket pitch. The cricket team were villagers and the sound of leather on willow was infinitely preferable to the yelled obscenities that carry on throughout the football season now. It certainly ruins my Saturdays and is the only thing that makes me think of moving.
10. Cat, dog or goldfish?	Dog. I have had a dog since I was 4 and our Dilly dog is the most loyal and gorgeous companion you could wish for.
11. What is the worst job you have ever done?	My mum used to pay me to pick the gooseberries in the garden. It was very thorny. I did it because it paid better than picking her blackcurrants. I was 6 or 7 - maybe that was when I realised that money isn't everything.
12. Tell us a joke.	How do you tell the difference between a bugler and a burglar? One of them has a bugle. And the other one is really upset that his bugle has been stolen
13. What would the people of Elham not know about you?	In another life before children, I rode Italian motorbikes and have ridden round Brands Hatch, Snetterton and Cadwell Park race circuits. I'm not saying I won prizes, but I had all the gear!
14. Last thoughts, final word.	Do not worry about what other people think... they will think it anyway. 'There's only one way of life and that's your own'. - Levellers.





# **Summer Show**

**Saturday 26th July 2025**

**Starts at 2pm in Elham Village Hall  
Admission £3.00 (includes tea & coffee),  
children free**

**Enjoy wonderful displays of  
Floral Art, Fruit & Vegetables, Art & Handicraft,  
Photography and Children's classes**

**Refreshments available and a prize Raffle**

Entry forms are in our summer schedule  
available at Elham Village Store, or download from our website:

[www.elhamgardeningociety.org.uk](http://www.elhamgardeningociety.org.uk)

Follow us on: [facebook.com/people/Elham-Gardening-Society](https://facebook.com/people/Elham-Gardening-Society)



We wanted rain - and appreciated it - but we didn't want the really cold wind which plagued us for a number of days.

The speaker at the meeting on May 15 was CLIVE NUTTMAN who told us about the rescue of part of the bank bordering the old railway line between Elham and Lyminge. The weed tangled bank was cleared and allowed to re-seed naturally - just to see what turned up. After this it was managed so that the most suitable and attractive plants would flourish. Eventually it became part of an area of classes for hobbies and crafts. A very interesting and different talk.

The next big event, of course is the Summer Show to be held July 26. Do make sure you collect a schedule and enter something, there are so many classes that there has to be one of special interest to someone!

We have no regular meeting in July but there is a visit to Lou Dowle and Steve Edney's nursery.

Meetings are held in the Peggy Pike room of the village hall on the 3rd Thursday of each month at 7.30. All are welcome.  
Frances Horton - 840550



Dear Friends,,

### The 'Triple-A' Event of the Ascension



I write the day after Ascension Day, often the least-mentioned feast of the Christian church. The following thoughts, culled from an article by J. John, have concentrated my mind.

Many things, from credit standards and security ratings to consumer goods, get labelled 'Triple A' or 'AAA', thus claiming to be of exceptional importance and value. For the Christian, Jesus' ascension into heaven can be seen as an 'AAA event', something of the very highest worth.

The return of Jesus into heaven in the Ascension is anticipated in the Gospels (for example, John 3:13, 6:62 and 20:17), and recorded in Luke 24:50-53 and Acts 1:9-11. Luke says the event occurred forty days after Easter, so Ascension is celebrated on a Thursday – 29th May this year. The Ascension is an AAA belief, with three 'A' words.

First, a *confirmation of Christ's Achievement*, marking the completion of everything Jesus had to do in his earthly ministry. On the cross Jesus cried out, 'It is finished!' but as he ascended into heaven, he could have repeated the words. The church began a week later, with the coming of the Holy Spirit at Pentecost – but Christ's earthly work of saving us was complete. It was indeed 'Mission accomplished!' The Ascension confirms that the price has been paid and there are now no 'outstanding debts'; it remains a 'visual aid' for Christians, past and present, that he has done his work.

Second, the Ascension is important because it proclaims *Christ's Authority*. It isn't Jesus leaving, it's Jesus leading. He's not gone; he's on the throne. Jesus always was King of the universe but now, in heaven and seated at the right hand of God the Father, he reigns as King. That's a powerful antidote to much that can trouble us. Many of us are wounded; in our lives we can struggle with such things as illness, depression or weariness. Mentally, we can be troubled with difficulties or easily be overwhelmed by news that sees everything in terms of political, economic or military might. Yet the Ascension reminds us of the comforting truth that the ascended Jesus has a power above all earthly powers. He's not out of sight, he's overseeing.

Finally, the Ascension is important because it is a *celebration of our own Access to heaven through Christ*. Many times in the New Testament, Christians are described as being 'in Christ'. To put our faith in Christ is, in some extraordinary way, to be bonded with him. In heaven we have 'a priceless inheritance – an inheritance that is kept in heaven for us, ..... beyond the reach of change and decay' (1 Peter 1:4). That we have this **access** to heaven is the truth that changes all that we are.

Jesus went up with scars, but reigns with majesty – our wounded healer is our reigning King. The Ascension comforts us that the ascended Jesus has a power above all earthly powers. One of my favourite songs says "the only scars in heaven are on the hands that hold you now"; trust Him to hold you now.

Christ's Achievement, Christ's Authority, our Access to heaven – a great TripleA event to hold onto!

Mike Chinneck

**Coming Soon from September:**

**The Rector's Wonderings.....**

**Please visit our website for information about our churches, services & events [www.elhamvalleygroupofchurches.co.uk](http://www.elhamvalleygroupofchurches.co.uk)**

### Parochial Church Council (PCC)

Newly elected PCC meets on July 3<sup>rd</sup> at 7pm in St Mary's.

**NB/. Items for A.O.B must be sent to the Secretary at least 48hrs before the meeting.**

3<sup>rd</sup> July **Prayer meeting @7.30pm** Methodist church

5<sup>th</sup> July **Prayer Breakfast @8am**

Churches Together in Elham meet on first Saturday in the month at the Methodist church for prayer and short reflection, followed by breakfast at 8.30am. Contact : David Whitethread (07961 053335) /

6<sup>th</sup> July 3<sup>rd</sup> Sunday after Trinity

**08:00Said Eucharist - 09.30Sung Eucharist with Baptism**

**Lectionary readings:**

Isaiah 66: 10-14, Psalm 66:1-8, Galatians 6.[1-6]7-16, Luke 10.1-11,16-20

cont...



## CHURCH PAGES

,,,cont/ 13<sup>th</sup> July 4<sup>th</sup> **Sunday** after Trinity

### 09:30 Sung Eucharist

#### Lectionary readings:

*Deut 30:9-14, Psalm 25:1-10, Colossians 1.1-14, Luke 10.25-37*

20<sup>th</sup> July 5<sup>th</sup> Sunday after Trinity

### 09:30 Sung Eucharist

#### Lectionary readings:

*Gen 18:1-10a, Psalm 15, Colossians 1.15-28, Luke 10.38-42*

27<sup>th</sup> July 6<sup>th</sup> Sunday after Trinity

### 09:30 Sung Eucharist

#### Lectionary readings:

*Gen 18:20-32, Psalm 138, Colossians 2.6-15[16-19], Luke 11.1-13*

### **Every Tuesday at St. Mary's...**

Traditional Morning Prayer at 8.30am in the Jesus Chapel. Download the free Church of England app or use the red book. A good way to begin the day. <https://play.google.com/store/apps/details?id=com.aimermedia.dailyprayer&pli=1>



### **Every Monday at the Methodist Hall ...**

Coffee and cake, a warm welcome and friendship, 10.30am – 12pm



## EXPLORERS

Fun church for children aged 7-11yrs, with games, snacks and activities meets at St Mary's on **Tuesday 15<sup>th</sup> July 3.30-4.30pm**

### **Churches Together in Elham Valley August**

1<sup>st</sup> August **Prayer meeting @7.30pm** Methodist church

2<sup>nd</sup> August Prayer Breakfast at 8am, Methodist Church.

Contact : David Whitethread (07961 053335)

3<sup>rd</sup> August 7<sup>th</sup> Sunday after Trinity

### **08:00 Said Eucharist 09:30 Sung Eucharist**

#### Lectionary readings:

*Eccles. 1:2, 12-14, 2:18-23, Psalm 49:1-12, Col 3:1-11, Luke 12:13-21*

10<sup>th</sup> August 8<sup>th</sup> Sunday after Trinity

### **09:30. Sung Eucharist**

#### Lectionary readings :

*Gen 15:1-6, Psalm 33:12-end, Heb 11:1-3, 8-16, Luke 12:32-40*

17<sup>th</sup> August 9<sup>th</sup> Sunday after Trinity

### **09:30. Sung Eucharist**

#### Lectionary readings:

*Jer 23:23-29, Psalm 82, Heb 11:29-12:2, Luke 12:49-56*

24<sup>th</sup> August 10<sup>th</sup> Sunday after Trinity

### **09:30. Sung Eucharist**

#### Lectionary readings:

*Isaiah 58:9b -end, Psalm 103:1-8, Heb 12:18-end, Luke 13:10-17*

31<sup>st</sup> August 11<sup>th</sup> Sunday after Trinity

### **10:00 BENEFICE EUCHARIST @ St Peter's Swingfield**

#### Lectionary readings:

*Sirach 10:12-18, Psalm 112, Heb 13:1-8, 15-16, Luke 14:1, 7-14*

**Events for the September Notice sheet** Please send to Margaret Keeble by 5th of each preceding month. [m.keeble@outlook.com](mailto:m.keeble@outlook.com)

## EXPLORERS

Games  
Snacks  
Crafts  
Activities  
Music

A fun way for children aged 7-11 to explore the Bible, prayer and the Christian faith in church.

**Where:** St Mary the Virgin

**When:** Every 3rd Tuesday in the month

**Time:** 3:30–4:30pm.

Please register with  
[secretary@elham.kent.sch.uk](mailto:secretary@elham.kent.sch.uk)



# CHURCH PAGES



## Donations

We would greatly appreciate your help to continue our work for God in the village of Elham and surrounding areas. If you can, please consider making a donation. This is our QR code for St Mary's Elham. To donate using this code, open up the camera on a mobile phone - point the camera at the QR code - follow the instructions.

The offertory plate will go round in the service, during one of the hymns. There is also the opportunity to donate by card using the PAYAZ machine by the North door.

## Safeguarding / 'A Safe Church':

If you ever have any concerns, contact our Parish Safeguarding Officer:  
Susannah Pallot : [susannahpallot@gmail.com](mailto:susannahpallot@gmail.com)

## Paper Copies of Notices

Some copies are available on back table in church. Please take a copy to give to those unable to access the internet.

## Elham Methodist Church

(all at 9.30am unless otherwise stated)

Services for **JULY**

6th Local arrangement

13<sup>th</sup> 10.15am Valley United Service at Lyminge

20<sup>th</sup> Tom Lewis

27<sup>th</sup> United Service at Rhodes Minnis

Services for **AUGUST**

3<sup>rd</sup> Rev Gill Songer (video)

10<sup>th</sup> Valley United Service (HC) Rev Gill Songer

17<sup>th</sup> Tim James

24<sup>th</sup> Valley United Service at Rhodes Minnis

31<sup>st</sup> Circuit Service at St Andrew's (10.30am)



*Sophia (Seffy) Lamyman was baptised at St Mary's on 1st June where her sister CJ welcomed her with a beautiful prayer of thanksgiving.'*

ST MARY THE VIRGIN ELHAM

**URGENTLY NEEDED!**

**TOWER CAPTAIN**

ESSENTIAL

- Must be competent and experienced Bell Ringer, confident in teaching others to ring church bells.

contact:  
[iandodd8888@outlook.com](mailto:iandodd8888@outlook.com)

T E C I N E V F O T N A H C R E M E H T  
 B I Q K X N M R S R P U Y O A I C I X G  
 B D T W K A J E Y Z F H C A E Y A A J W  
 D E U U C X P L R N F N T S K C S Q G Y  
 S C R B S M W Y L N F T P Y G I X L B M  
 C W E U E A Y S J R W Y U O N M A T G T  
 V T C T S K N E T E A K R U I O C D W E  
 H V E R Q A E D L W L N G L K E N M S I  
 T H Z R A U E F A N P W U I D R Q C V L  
 T J P F A S T M H N R G O K I E R A V U  
 M A D Y I H E O R G D G P E B Q G S H J  
 D S N H N Z J A V O Q R X I Y O X Q L D  
 R N Z I P G B O C H F S O T U X V W C N  
 M O G A N E L A T S R E T N I W E H T A  
 U H L I S O I Z D Q U Q R A I P X P O O  
 T Z K L B U B D I I E I I U S C Z Z T E  
 O A C P E A S F L W S B L V S Y U D G M  
 R Z Z G W H Z J U U K I A U Y A F S S O  
 I H N S M A T K F J I H F V J T E G Y R  
 A R Y B U C C O R I O L A N U S A M Q A

## July Wordsearch

The month of July was originally called Quintillis. The Roman Senate renamed it in honour of Julius Caesar. Can you find this and other Shakespearean plays in this wordsearch?

As You Like It

Julius Caesar

The Merchant of Venice

King John Titus and Andronicus

Measure for Measure

Twelfth Night

The Winter's Tale

The Tempest

Romeo and Juliet

Macbeth

King Lear

Coriolanus





**Saturday 26th July**

# SUMMER SHOW

**2pm in Elham Village Hall,  
admission £3.00, children free**

**Have you seen the Children's and family classes?**

**Make biscuits, make a collage, make a picture of a flower,  
why not give it a try - children's classes  
are free to enter**

Entry forms are in our summer schedule  
available at Elham Village Store, or download from our website:

**[www.elhamgardeningociety.org.uk](http://www.elhamgardeningociety.org.uk)**

Follow us on: [facebook.com/people/Elham-Gardening-Society](https://facebook.com/people/Elham-Gardening-Society)





## LOCAL NEWS



### **Jazz and Strawberries on the Lawn**

Idyllic surroundings, glorious summer weather, superb music, strawberries and cream,

a well-stocked bar and a capacity audience!

Thank you so much to everybody who supported our main 2025 fundraiser, "Jazz and Strawberries on the Lawn" on Saturday 14 June.



We are most grateful to Jean-Louis and Virginie Barrois for allowing us to use their lovely garden and to the Kings Arms who very generously supported the event and ran the bar. Thank you, too, to the wonderful Anything Goes Jazz Band and the Elham Bellringers who added to the occasion.



The event will have contributed substantially to the Friends of St Mary's Funds and will enable us to continue helping to maintain and enhance our historic Parish Church. TG



### **The Rector's Message**

July is the time our teachers and school staff - look forward to a well-earned rest – *schools out for summer!*

We all need rest and God gave us the gift of Sabbath rest: regular time to stop, to pause, to have a break from the busyness, stress and grind of work. To enjoy and take satisfaction from the goodness and beauty around us, to be refreshed, to reflect and take care of ourselves, spending time with those who care for us.

It is in our best interests to accept this God-given gift and not make ourselves too busy to receive it.

Jesus said, "Come to me. Come away with me and you'll recover your life. Walk with me...watch how I do it. Learn from the unforced rhythms of grace...Keep company with me and you'll learn to live freely and lightly."

**Matthew 11: 28-30 (The Message Bible)**





## LOCAL NEWS

### ELHAM SUMMER FOOD and CRAFT FESTIVAL

Thank you to everyone who supported the Summer Food and Craft Festival on Sunday 8<sup>th</sup> June.

We started with the beautiful church bells at 10.30am followed by a fantastic “witty ditty” from Pam Ferris who officially opened the event for us at 11 .00 am.

We had over 40 vendors spread between the church and The Square and we would like to express our thanks to Rev Carole Bates for enabling us to utilise the church for all our craft stalls.

The Chancel Café were offering refreshments in the church and The Kings Arms were in The Square with a BBQ and bar

The Village Hub stall was busy highlighting what Elham has to offer with regard to various groups within our thriving community.

The committee would like to thank all the volunteers, the bell ringers, car parking team, the raffle team and special thanks to Sally Greenwood and Pam Ferris for their continued support.

We would also like to thank Roger for the use of his field for traders parking and Elham School for the use of their playing field. Thank you to The Square residents for their patience and to Colebrook Sturrock for printing all the posters.



Our chosen charity for the raffle was the local Motor Neurone Disease Association and it was lovely that they came along on the day to support us as well. With a donation from EFM committee we have been able to give them £755.00. Thank you to everyone who donated to our raffle – The Sometimes Gallery, The Dog at Wingham, Big Jigs Toys, Essential Beauty and Holistic Mind Body and Soul (Hythe). Thank you also to some of the traders who donated items for our wonderful hampers.

As a committee we are delighted to be part of this fantastic village event and whilst exhausting, we all agreed it was worth it.

Debbie Francis





## SHED UPDATE AND OPENING TIMES



After a busy spring and early summer, our Elham Community Shed session leaders are taking a well-earned rest and the Shed will be closed in August. However, if you just can't stay away or have an urge to create or mend something, the Shed will be open on request – just email us on [elhamshed@gmail.com](mailto:elhamshed@gmail.com) or message us on Facebook.



Saturday July 26<sup>th</sup> is Elham Gardening Society's Annual Summer Show so **no sessions will be run in the Shed** but it will be open for anyone wanting to take a look around. Look out for Shed Team members in their bright pink polo shirts who can take you round and answer all your questions.

The latest creation, thanks to Chris Burrows and members of the Elham Environment Group, and Shed members, was a collection of bat boxes to be fixed around the village to ensure safe spaces for our bat population.

Sessions were also run by Pip Hope to make looms. The pictures show her preparation and participants. This is an on-going project and will be followed by lessons on how to use them. Watch this space.

We are also planning a Power Tool Saturday, your chance to learn how to use certain tools. The date will be announced later.

We are always looking for ideas of things to make (that is, you, and us!) to enhance Elham Village. It could be planters, or anything else that could be made in the Shed. Do please share your ideas with us. We also welcome the opportunity to show you how to mend things, a garden table, a suitcase, a bench... just contact us.

Enjoy the summer, and we look forward to seeing you again in September.  
ECS Team



### ***Timetable for July:***

Mondays, Tuesdays and Saturdays, 10am to 12 noon but not Saturday 26<sup>th</sup> July as it is Elham Gardening Society Show..

Thursdays, 2pm to 4pm.

The Shed will be closed for the month of August. Opening details in September's Newsletter





## Singing FOR ALL

Funded by the National Lottery, everyone is welcome – no matter your experience!

**FREE** and booking is not required.

For further information call us on 01303 269602

**DATES FOR YOUR DIARY**

Wednesday 2<sup>nd</sup> July  
11:30AM – 12:30PM  
at The Tayne Centre.  
Church Road, Lyminge, CT18 8JN

Wednesday 9<sup>th</sup> and 16<sup>th</sup> July  
11:30AM – 12:30PM  
at the Methodist Church.  
Church Rd, Lyminge, CT18 8JA

We will break for the summer holidays returning  
Wednesday 17<sup>th</sup> September.

 Hythe, Lyminge & Ashford  
Registered charity number 1125274.  
Company number 6589817.  
\* Age UK Hythe, Lyminge and Ashford 2025.



## CANTORES Summer Prom Concert

Lyminge Village Hall  
Saturday 12<sup>th</sup> July 4:00 pm

Sing along with the traditional prom numbers

Refreshments and Raffle

Tickets on the door: £10:00  
Children free

  
Registered Charity No 1087408



**Adam and Katie, the osteopaths from AK Healthcare in Lyminge, are thrilled to welcome Foot Health Practitioner Jayne Garvey to the clinic.**



## AK Healthcare



**Jayne qualified as a foot health practitioner from the SMAE Institute. She is dedicated in providing personalised care for a range of foot problems, ensuring your feet are healthy, comfortable, and well-supported through every step of life.**

**On Tuesday mornings Jayne will be offering nail cutting, management of cracked heels, fungal nails & infections, painful nails, and concerns related to diabetic foot health, verruca, corns and medical pedicures.**

**To ask Jayne how she can help you and to make a booking with her, please contact her directly on 07832 797341 or email her at [jayne@solelyfootcare.co.uk](mailto:jayne@solelyfootcare.co.uk)**



### BEE AWARE

Roger Newman was called away from his weekend relaxation time at the Farmers' Market because a swarm of bees had landed in a villager's garden. He was quick to respond and relocated the swarm safely.

Thank you Roger... we look forward to the availability of Valley Honey!

Editor

### BEE WISE - Valley Bees News

Up until the beginning of May things were very quiet in the apiary – then suddenly with the improving weather and air temperatures we suddenly got very busy. The Queen bees started laying eggs, the worker bees started foraging and the scout bees started looking for new places to which to swarm.

In total we have collected three swarms – two of which were in the village and a really massive swarm that has recently been collected from a local garden centre. These have now been relocated into National Beehives around Elham. Hopefully when they have all settled down and got themselves organised, we will be able to harvest some honey – as long as the bees will allow us to!



Yellow Legged Hornets (Asian Hornets) are still causing problems in South East Kent and there have been sightings in Barham, Deal and Seabrook.

Where possible the hornets have been located and destroyed.

Monthly meetings organised by the Dover & District Beekeepers' Association continue to be held monthly at the outdoor apiary in Eythorne. Anyone interested in taking up beekeeping is welcome. Please contact me, Roger Newman, or Maggi Harrowell the Hon. Secretary on 01304 821208. A system is in place where, as a beginner, you can loan a National Beehive for a

year to start your beekeeping life, no cost involved, and it can give you a proper taste of bee management on the site of your choice.

Roger Newman Valley Bees – based in Elham  
<http://www.valleybees.co.uk>

(At time of writing we have limited amounts of Elham Valley Honey available. Please email via the website.)

The picture above is of a swarm of bees of which we were notified that had landed on a tree stump. A hive was placed next to them and after a little encouragement and time they all walked in!.



**News from Elham Valley Cricket Club**



## **Elham Valley Cricket Club Quiz**

on Saturday 12th July  
at the Cricket Pavilion,  
Holloway Field, Park Lane, Elham. CT4 6UU.

**7PM FOR 7.30PM**

There is a fully licensed Bar and there will be a B-B-Q  
We ask that you do not bring your own drinks, as we have a bar

£3-00 per head, teams of 6. All proceeds go directly to EVCC  
email [evccjuniors@gmail.com](mailto:evccjuniors@gmail.com) TO BOOK YOU TABLE

### **NEW PLAYERS ARE VERY WELCOME – ANY age or standard.**

Practice night is on Friday Evenings 6.00 – 8.00, using the nets at the ground.

We also welcome any spectators,  
there is ample parking available at the ground with tea and coffee available.

#### **Junior coaching and teams**

This season the club will again be running junior coaching sessions (ages 5 – 16) at the club on Friday evenings 5.30 – 7.30pm throughout the summer from end of April until August.

We are also planning to run various age group teams depending upon numbers.

### ***Any adults or youngsters for Table Tennis?***

The table tennis sessions on Monday evenings in the Anna Clayton room have been going well - long may they continue.

There is now a session from 6:15 to 7:15 for children, in school Year 5, 6, 7 or 8 ( adult accompanied ) in the Anna Clayton room. Please contact me if you intend to come at 6.15.

The adult session continues on Monday nights at 7.15 Elham Village Hall, upstairs as usual.

Equipment provided; we just need your enthusiasm.

If you would like further details please contact Jim Clements 01303 840295 or [ajcjim1904@gmail.com](mailto:ajcjim1904@gmail.com).





## LOCAL SPORT and ACTIVITIES

### ELHAM SPORTS CLUB

ESC offers Tennis, Pickleball and Badminton - new members always welcome – tennis and pickleball members can either book and play or join the friendly club sessions



#### **Tennis -**

***Mondays - 7 pm***

Contact: Clive Stanyon - 01303 840820 or stanyonc@aol.com

***Tuesdays and Thursdays - 10 am***

***Fridays - 6 pm***

Contact: Maureen Alexander - 07714 415651 or

maurentalexander@gmail.com



**Pickleball - Indoor (spaces limited) and Outdoor Sessions –**

***Mondays - 3.30 pm and 6 pm (Indoor/Outdoor if weather allows)***

***Wednesdays - 3.30 pm (Indoor/Outdoor if weather allows)***

***Fridays - 9.30 am - Open Club Session (Outdoor if weather allows)***

Contact: Abby Bourn - 07754 085866 or abby.bourn@hotmail.co.uk



**Badminton - Indoor**

***Wednesdays - 6.30 pm***

Contact: Clive Stanyon - 01303 840820 or stanyonc@aol.com

For more information visit our website: <https://clubspark.lta.org.uk/ElhamSportsClub>

## Elham Valley Walkers Summer Programme

Please check <https://elhamvalleywalkers.co.uk/our-next-walk/> prior to joining a walk, for any last minute changes, or phone the walk leader if you are unable to access the internet.



### **Tuesday 8 July**

Meet 10am from Peene. To reach start point and car park, from A20, turn left immediately after the old railway bridge, up a short concrete track to parking at the top, (nearest postcode CT18 8AZ Elham Valley Line Trust Museum). The walk follows the Elham Valley Way north, departing to climb steeply uphill, then circling towards Folkestone and reaching a viewpoint above the White Horse of Kent. Returning via a steep grass descent we rejoin the Elham Valley Way at the foot of the downs. About 5 miles, challenging, walking poles and boots a must. Chris Jelly leads 07518163183

### **Sunday 27 July**

Meet at 10am Church road playing fields, Smeeth TN 25 6SB. A route of just over 5 miles from Smeeth, walking through a mix of country roads and woods to the Hatch deer park (no dogs allowed) at Mersham Le Hatch, then across fields to Brabourne Lees to return along back lanes and fields to Smeeth. Some challenging stiles. Leader is Nikki Allen, Tel 07708 099149





**COPPERS**  
Masters of Indian Cuisine

**NOW WE DELIVER TO  
ELHAM & LYMINGE**

**Monday to Sunday 17:30 to 21:30**  
**Closed on Tuesdays**

**Get in touch and let's us deliver an  
authentic curry right to your doorstep**

MINIMUM ORDER & DELIVERY CHARGES MAY APPLY

📍 26 Prospect Road, Hythe, CT21 5JW ☎️ 01303 267707

Visit [coppersinhythe.co.uk](http://coppersinhythe.co.uk) for more details



**Monday to Saturday – A La Carte & Bar Menu**  
Lunch 12.00-15.00  
Dinner 17.30-20.30  
(Bar Menu - 12.00-17.00)

**Sunday Lunch**  
12.00-18.00


**Join in the fun with our Quiz Nights, every 2nd Monday of the month!**  
Call to book.

**Music Saturdays** – From 4-6PM, come and have a listen!

**Join us for our 'GREEK NIGHT' here at The Kings Arms on the 3<sup>rd</sup> July!**

**Contact Us**  
01303 840 242  
[info@thekingsarmselham.com](mailto:info@thekingsarmselham.com)  
[www.thekingsarmselham.com](http://www.thekingsarmselham.com)

**Colebrook Sturrock**



**Thinking of  
moving home?**

**SELL OR RENT your home  
this Summer! Contact your  
local, experienced village  
agent for a FREE  
Valuation!**

**01303 892000**

Elham 01303 840422	Hawkinge 01303 892000	Saltwood 01303 260666	Sandwich 01304 612197	Walmer 01304 381155
-----------------------	--------------------------	--------------------------	--------------------------	------------------------



**The Abbot's Fireside is  
now closed.**

**Freehold property for sale.**

**All enquiries please email**

[info@theabbotsfireside.com](mailto:info@theabbotsfireside.com)

**ST MARY'S CHURCH HALL**

**For parties, for the smaller function and for Meetings**

**£12.00 for Mornings and Afternoons**  
**£15.00 for Evenings and Saturdays**  
**Use of Kitchen included**

**Bookings: Mrs Pat Holmes**  
**01303 840647**



**EXPLORER  
TRAVEL  
HOLIDAYS**  
together with HAYS TRAVEL

**ABTA**  
ABTA No.L3832



## YOUR LOCAL INDEPENDENT TRAVEL AGENT

02033 724 486 | Elham Kent  
just4u@explorertravelholidays.co.uk  
www.just4u-explorertravelholidays.co.uk

AS A FRANCHISE OF THE LARGEST  
INDEPENDENT TRAVEL AGENTS

I CAN BOOK MANY SUPPLIERS  
FOR YOUR NEXT CRUISE HOLIDAY



PLUS MANY MORE...

AS A FRANCHISE OF THE LARGEST  
INDEPENDENT TRAVEL AGENTS

I CAN BOOK MANY SUPPLIERS  
FOR YOUR NEXT FAR AND AWAY HOLIDAY



PLUS MANY MORE...

AS A FRANCHISE OF THE LARGEST  
INDEPENDENT TRAVEL AGENTS

I CAN BOOK MANY SUPPLIERS  
FOR YOUR NEXT SHORT HOLIDAY



PLUS MANY MORE...

# YOUR SAFARI

  
*Namibia and beyond*

**Guided Safaris  
Self-Drive Adventures  
Tailor Made Holidays**



*Contact Your Elham Safari Specialist*

[www.yoursafari.co.uk](http://www.yoursafari.co.uk)

[kathryn@yoursafari.co.uk](mailto:kathryn@yoursafari.co.uk)

01233 510269

# The Sometimes Gallery

**A Pop-up Art Gallery**  
**Every Saturday and Sunday**  
**12pm - 5pm**  
**St Mary's Hall, Elham**

Showcasing local artists, creatives and makers  
Original artwork, limited edition prints & cards

[info@thesometimesgallery.com](mailto:info@thesometimesgallery.com)  
[www.thesometimesgallery.com](http://www.thesometimesgallery.com)



# E.F.LETTINGS

Residential & Student



## YOUR LOCAL LETTING AGENT

At EFLettings we believe in a personalised service  
We are here for you every step of the way

[www.eflettings.co.uk](http://www.eflettings.co.uk)  
Tel: 01227 533550



## WELCOME TO COCKPIT COTTAGE

Cockpit Cottage is a 5 bedroom cottage set just off the village square of Elham. The whole cottage has been styled and furnished using Neptune, Canterbury and the bathrooms have been finished in both Burlington & Booth & Co.

Ideal for...

Family Getaways | Staycations | Visiting Guests  
Bridal Parties | Date Nights

T: 01303 316600 | E: [info@cockpitcottageelham.com](mailto:info@cockpitcottageelham.com)  
W: [cockpitcottageelham.com](http://cockpitcottageelham.com) | Insta: [@cockpitcottageelham](https://www.instagram.com/cockpitcottageelham)



Scan me!



Valley View  
Shepherds Hut Stays

07740 351095

Mount Lodge Smallholding, Cullens Hill, Elham, CT4 6UJ





## Martin N. Southon and Associates

B.D.S. L.D.S. R.C.S. (Eng)

### Dental Surgeon

*Giving you the confidence to smile!*

**ST STEPHENS  
DENTAL  
PRACTICE**

4 Hales Drive, St Stephens  
Canterbury CT2 7AB  
Tel: 01227 452668

[www.martinsouthondentist.co.uk](http://www.martinsouthondentist.co.uk)

- New Patients Welcome
- Affordable Dentistry
- Cosmetic Dentistry
- Tooth Whitening
- White Fillings
- Implants and Laser Dentistry
- Same Day Emergency Treatment
- Free On-Street Parking
- Friendly Welcoming Atmosphere



**foot fine care**

### Setting your feet free

We provide care and treatment for foot and nail conditions, as well as micro-suction ear wax removal, in the comfort and privacy of your own home. Based in Canterbury, serving South East Kent.

- EAR WAX REMOVAL • NAIL CLIP AND FILE
- CORN + CALLUS REMOVAL • CRACKED HEELS
- INGROWN NAIL • FUNGAL NAIL INFECTION
- THICK NAIL REDUCTION • DIABETIC FOOT CARE • VERRUCA



**WWW.FOOTFINECARE.COM MON-FRI 9AM-5PM**

**07526 355488 - [footfinecare@gmail.com](mailto:footfinecare@gmail.com)**



**East Kent  
Foot Care**

Clinics in Ashford, Dover, New Romney Home visits on request

**07745 532075**

**Podiatry, Chiropody, Foot Health.**

Treating and managing foot and nail conditions, corns, callus, insoles, ingrown nails, diabetic foot care

**[www.eastkentfootcare.co.uk](http://www.eastkentfootcare.co.uk)**



## Glass Flamingo Art

### Individual, handmade and unique Fused Glass Art

Fused Glass workshops in Barham

Get creative and have fun, designing and making your own fused glass pieces.

You will be able to make a piece of your own design or choose from standard templates that are available.

2.5-3-hour workshops, which can be morning or afternoons with all materials provided.

Tuition can be provided on an individual or small group basis.

**Please contact Nicki for more information**

**Phone: 07748 628993 or**

**Email: [glassflamingoart@gmail.com](mailto:glassflamingoart@gmail.com)**



Art commissions undertaken  
in all media

Pip Hope - artist

enquiries

**[hairyfairyland@gmail.com](mailto:hairyfairyland@gmail.com)**



## Sara's Fruits

Apple and Pear Juice - 1 Litre Bottles  
Frozen Fruits 500g Freezer Bags

FRESH BERRIES NOW ALSO FOR SALE

### Raspberries Blueberries

Littlegate House, Park Gate, Elham CT4 6NE  
Email [sara@littlegatehouse.com](mailto:sara@littlegatehouse.com)  
07980911589

## Do you need a helping hand?

Garden and Domestic Work  
House and Pet Sitting  
Small Animal Care



Then please 'phone

**Fiona Johnson**

**01303 840507**

(working locally for 30 years)

## HOME VISITING OPTOMETRIST



If you are over 60 years of age and no longer able to get out on your own, then you are eligible for a NHS sight test in your own home.

Please call

**Elaine Edwards BSc (Hons) MCOptom**  
**01303 840541**



### Sports Massage

Manual manipulation of soft tissues of the body with the aim of alleviating sore muscles and tension. Not just applicable to athletes but to anybody wishing to recover from injury or dysfunction.

### Kinesiology Taping

Short to mid term versatile and comfortable treatment intervention that aims to reduce pain and increase range of movement.

☎ 07808228770

📍 Ohana Salon, 2 Culling's Hill, Elham, CT4 6TE (mobile services also available)

✉ [ellieminter.message@gmail.com](mailto:ellieminter.message@gmail.com)

📱 @Ellie Minter Sports Massage

## SNIPPERS & CLIPPERS

UNISEX HAIR SALON

✂ APPOINTMENT NOT ALWAYS NEEDED

✂ WEDDING & SPECIAL OCCASION

✂ GENTS WELCOME

✂ FREE WIFI

✂ SHELLAC NAILS

🏠 4 Station Rd, Lyminge, Folkestone, Kent, CT18 8HP

☎ 01303 647 222

✉ [info@snippersandclippers.co.uk](mailto:info@snippersandclippers.co.uk)



## PENNYPOT DENTAL

CREATING CONFIDENT SMILES

### New Patients Welcome

General and Cosmetic Dentists

- Tooth Whitening
- Hygienist Services
- Adult Brace Systems
- Convenient Opening Hours (early mornings, late evening & Saturdays)

and much more...



90 Canterbury Road, Hawkinge, CT18 7BN  
[hawkinge@pennypotdental.co.uk](mailto:hawkinge@pennypotdental.co.uk)

01303 760149  
[www.pennypotdental.co.uk](http://www.pennypotdental.co.uk)

# JP'S BARBER BUS

A UNIQUE BARBER & HAIRDRESSING EXPERIENCE

EST. 2020



VILLAGE HALL CAR PARK

EVERY THURSDAY AND SATURDAY

8:00 am - 1:00 pm

CASH OR CARD ACCEPTED

BOOK FOR THE FUTURE



Scan me!

☎ 07500 504788

📱 Jp's Barber Bus

📱 [jpsbarberbus](https://www.instagram.com/jpsbarberbus)





www.iane Brennanfitness.co.uk / ianeBrennanfitness@gmail.com

Pilates, Skeletal alignment exercises and Stretch  
Tuesday Morning 08.30-09.25 and 9.30-10.25  
Elham Village Hall CT4 6SX

Thursday morning  
Pilates, Mobility exercises and Stretch  
08.30- 09.25 and 09.30- 10.25  
St Mary's Hall CT4 6TQ

**Bring your own mat, towel and water.**

**PAYMENTS MONTHLY IN ADVANCE:**

**£30.00 = 1 CLASS A WEEK. £60.00 = 2 CLASSES A WEEK.**

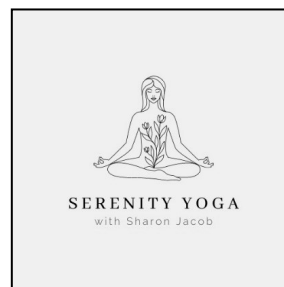
### Rehabilitation

Do you need help with?

- Stroke Recovery
- Post Operative
- Balance
- Posture and skeletal movements
- Motor Skills
- General Rehabilitation
- Joint Replacement Rehabilitation
- Cardio rehabilitation

In the comfort of your own home.

**Please call 07710747499 Jane To Pre Book or more Information**



**Hatha, Zen and Yin Yoga  
Mindfulness Meditation  
Trauma Informed Yoga  
Pre and Post Natal Yoga  
1:1 and group classes**

Gentle Evening Yoga, Wednesdays 7-8 PM

Morning Yoga, Fridays 10-11 AM

Currently at St Mary's Church Hall, Elham

[serenityyoga20@gmail.com](mailto:serenityyoga20@gmail.com)

[www.serenityyoga20.com](http://www.serenityyoga20.com)

@serenityyoga



**AK Healthcare**



Osteopaths Adam and Katie are here to help you minimise your pain, optimise your mobility, and enhance your health and wellbeing.

We believe that everyone deserves to live a life free from the limitations of pain, and we're here to support you on your journey to a healthier, more active lifestyle.

Whether you are searching for help managing a chronic condition such as arthritis or circulatory problems, or you have a painful frozen shoulder, back pain, sciatica or recent injury.....we are here to support you.

**Book online via our website or give us a call for more information.**

**AK Healthcare  
Garden Suite  
4 Station Road, Lyminge**

Tel; 07904311554 / 07980897382  
[www.akhealthcare.org.uk](http://www.akhealthcare.org.uk)

## Essential Beauty

[janenemoat@gmail.com](mailto:janenemoat@gmail.com)



Essential beauty-Beauty therapy - aromatherapy -  
reflexology - reiki

Non surgical lift facial, collagen facial, manicures,  
pedicures, eyelash lift and tinting, eyebrow  
tinting and waxing.

Experienced therapist Janene Moat  
Call Janene 01303 840052

Find essential beauty on   
Gift vouchers available





**Hawkinge**  
Veterinary Surgery

An independently owned veterinary surgery for all types of small animals.

Separate waiting, consultation and recovery rooms for cats, small pets and dogs.

Opening hours:

Monday to Friday 08:00-19:00

Saturday 08:30-13:00

24hour emergency service

Hawkinge Veterinary Surgery 9b Defiant

Close Hawkinge CT18 7SU

**TEL: 01303 764190**

[www.hawkingevetsurgery.co.uk](http://www.hawkingevetsurgery.co.uk)

**email** [hawkingevetsurgery@gmail.com](mailto:hawkingevetsurgery@gmail.com)

## Mutts Appreciated

Professional  
Dog Grooming Services



Based in Newingreen  
Fully qualified and insured  
All breeds welcome  
Tel: 07927335947  
Instagram: @muttsappreciated

## BARKING BEAUTIES

01303 840456 / 07866 463660

Unit 11, Barham Business Park

Valley Road, Barham CT4 6DQ

Fully qualified City and Guilds grooming:

Bathing, drying, nail clipping. De-matting. Hand stripping and de-shedding.

Fully qualified City and Guilds Master Diploma and K9 First Aid qualified.

£16 for simple wash and blow dry.

**[www.affinityandbarkingbeauties.co.uk](http://www.affinityandbarkingbeauties.co.uk)**



**Elham**

**Dog Training Club**

Elham Village Hall

**Kennel Club Accredited Instructor**

**Kennel Club Good Citizen Dog Scheme**

**Puppy Classes**

**Talking Dog's Rally**

For further information please call

Sue Coulstock 07542727326

**email:** [elhamdtc@gmail.com](mailto:elhamdtc@gmail.com)

**Anna Lindley**  
(RVN, Dip.A.Physio)



- Offering physiotherapy assessment and treatment of dogs, cats and small animals.
- Physiotherapy can help with osteoarthritis and the ageing pet, post operative orthopaedic surgery, neurological, spinal conditions, unexplained lameness and many more conditions.
- I use a combination of manual therapy, laser, ultrasound therapy, TENS, kinesiology tape and exercises to rehabilitate your pet depending on your their needs. I also address environmental and exercise factors that can help your pet with their condition.
- I am fully insured with over 16 years experience working with animals. I am a member of the International Association of Animal Therapists (IAAT).
- For more information please visit my website: [annasanimalphysio.co.uk](http://annasanimalphysio.co.uk) or feel free to contact me on 07944 606453 or [anna@annasanimalphysio.co.uk](mailto:anna@annasanimalphysio.co.uk)
- Why not follow me on social media:  
Instagram: [@annas\\_animal\\_physiotherapy](https://www.instagram.com/annas_animal_physiotherapy)  
Facebook: [@annasanimalphysiotherapy](https://www.facebook.com/annasanimalphysiotherapy)





### **Nicki's Garden Design and Maintenance**

Hadlow College Trained and Qualified  
Bespoke planting designs from whole garden projects to re-designing old tired borders. Plants can be supplied.

#### **General Maintenance**

Weeding, pruning, lawn mowing, hedge cutting, planting.  
Gardening can be provided on a weekly, fortnightly or seasonal basis.  
Nicki 07748 628993 Email: [nickisgardendesign@gmail.com](mailto:nickisgardendesign@gmail.com)




## **Pratt & Co.**

Home & Garden  
Makeovers to Maintenance

07711 756187

[lancepratt@hotmail.co.uk](mailto:lancepratt@hotmail.co.uk)

### **R.B.W.**

#### **KENT'S WATER FEATURE SPECIALISTS AND POND BUILDING EXPERTS**

- Garden/Pond Design, Building and Refurbishments
- Pond Cleaning/Maintenance/Maintenance Contracts
- Child Safe Pond Covers
- Filtration Specialists
- Patios-Decking-Fencing-Brickwork-Arbours



Tel. 07563 212858  
**FREE ESTIMATES and CONSULTATIONS**

[www.reflectionbywater.com](http://www.reflectionbywater.com)  
Email: [andrewlongrbw@hotmail.com](mailto:andrewlongrbw@hotmail.com)



### **HARRIS GARDENING**

Local Gardener  
covering Dover, Deal,  
Canterbury,  
Sandwich and all  
surrounding areas.

With 15 years' experience, fully insured, professional,  
reliable, friendly service with competitive rates.

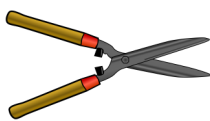
**Call Sean on 07403464105**

for all your gardening needs

**Website:** [harrisgardeningandmaintenance.com](http://harrisgardeningandmaintenance.com)  
**Email:** [harrisgardeningmaintenance@gmail.com](mailto:harrisgardeningmaintenance@gmail.com)

## **KJB**

### **Garden Services**



**Mowing Pruning  
Weeding  
Hedge cutting  
General garden  
maintenance**

**Over 35 years  
experience**

Contact Kevin  
01303 862181  
Mobile 07704989402  
Email [kaldock06@gmail.com](mailto:kaldock06@gmail.com)



### **Hythe Garden Landscapes**

Established in 2001, award winning Hythe Garden Landscapes have been delivering the highest level of service to both domestic and commercial clients for a number of years.

We are fully insured members of the Association for Professional Landscapers (APL) and encompass every aspect of gardening including:

- One-off garden jobs
- Garden maintenance packages
- Patios and driveways
- Composite decking
- Fencing
- Planting
- Tree surgery
- Turfing

Please take a look at our website  
[www.hythegardenlandscapes.co.uk](http://www.hythegardenlandscapes.co.uk)  
to see some of the projects that our professional, reliable team have completed, or call us on  
**01303 770610**



**R.J.Mills & Son  
BUILDING CONTRACTORS**

New builds, extensions and restoration  
Loft conversions and renovations  
Groundwork, drainage and patios

35+ years experience  
Free estimates and advice



**Mobile: 07899 883925 Email: [rj.mills@btinternet.com](mailto:rj.mills@btinternet.com)**

**SID MOFFATT**

Carpenter Builder  
Painter and  
Decorator  
Tel 01303 840630  
07812 638693



**Carpentry, Joinery & Handyman services including:**  
Shelving - Cupboards - Wooden Floors - Door Hanging  
Door Furniture - Bespoke Woodwork - Shed Repairs  
Garden Maintenance - Concrete Bases

**RELIABLE - LOCAL - FULLY INSURED**

**01303 844 409 / 07808 731 118**  
**[www.julesharrison.co](http://www.julesharrison.co)**

**D.M.B. Plastering**

**All aspects undertaken**  
*Interior, Exterior, Plastering, Rendering,  
Coving, Ceilings, Walls, Floors*

**Finest quality assured, CSCS Certified**  
**28 years experience**

**Free estimates - Reliable service - Fully insured**

**Call David on 07818 607209**



**Lou Lloyd  
CARPENTER**

**Lou Lloyd  
CARPENTER**

[loulloyd@rocketmail.com](mailto:loulloyd@rocketmail.com)

**07984 426214**

Kitchens, Flooring, Wardrobes,  
Doors, Decking and more!



**C M Carpentry & Building Services**

Work undertaken -

- : Carpentry work
- : Extensions
- : Refurbishments
- : Garage Conversions
- : Patios
- : Fully Qualified installers of Resin paths & drives
- : Fully Qualified "Tuffstuff" fibreglass roof installers with a 25 year product guarantee.
- : General building maintenance
- : Fully insured, friendly and local professionals carry out all works.
- : Free Quotations.
- : References available.

Contact Charlie Mills on -

**M: 0789 003 8645**

**E: [cmcarpentry@hotmail.com](mailto:cmcarpentry@hotmail.com)**



## **JACKSON PLUMBING**

**Domestic plumbing and property maintenance**

No job too small

Special Rates for O.A.P.s

Free estimates

Home/evening: 01303 270691

or daytime direct line to the proprietor

07773 089398 or 07864 929826

Email: jackson.mark20@gmail.com



## **OIL BOILER SERVICE**

- \* Established 1987
- \* Friendly family business
- \* Prompt professional service
- \* Sensible prices
- \* Fully qualified and insured



For routine service or emergency breakdowns

**Call 01227 760428 or 07768 594147**

[www.oilboilerskent.co.uk](http://www.oilboilerskent.co.uk)



## **Swanson Plumbing and Heating**

Local Elham Valley

experienced plumber

**Reliable and on time**

From taps to bathrooms  
to complete heating systems

**24hr emergency service**

Call 07971090018 / 01303 840177

Email [FBS\\_LTD@Yahoo.co.uk](mailto:FBS_LTD@Yahoo.co.uk)



Here to make a difference

## **FINCHAM**

## **PLUMBING and HEATING**

We specialise in  
bathroom remodelling,  
including all tiling and pipework.  
Natural gas boiler servicing.  
Installation, Maintenance, Repairs  
and Replacement.

All your plumbing requirements.  
Martin is a qualified Plumber  
Gas Engineer

**Gas Safe, CIPHE, WIAPS registered.**

Rosemary and Martin Fincham

**07835 851 706**

[martinfincham@sky.com](mailto:martinfincham@sky.com)

## **Luxury German Kitchens at Internet Prices**



Contemporary and traditional styles  
Family run local business with the most  
experienced design team in the area

Built-in appliances from Neff, Bosch, Siemens and Mele

Visit our showroom at: Units 8-10 Kingsmead, Park Farm Ind. Est.

Folkestone CT19 5EU

01303 223322

[info@tradexltd.co.uk](mailto:info@tradexltd.co.uk)

[www.tradexltd.co.uk](http://www.tradexltd.co.uk)

## **CAROL CREES CLEARANCES**

**HOUSE CLEARANCE IN SOUTH EAST  
KENT**

Based in Folkestone

Full/Part House Clearance

Est. over 30 years –Fair Prices Paid

Antique/Vintage/Retro/Modern

Registered Rubbish Carrier

Contact SIMON CULLEN 07745 421680

[sijnzo@aol.com](mailto:sijnzo@aol.com)





**CEDAR HOME MAINTENANCE**  
General Builders and Roofing Specialist

Roofing.-PVC.-.windows/doors.-.Kitchens/  
Bathrooms.-.Plastering.-.Electrical-  
Installations - Plumbing

CALL NOW FOR A FREE  
NO OBLIGATION QUOTATION  
**All Work carried out by Qualified Tradesmen**  
(Fully insured – all areas of Kent covered)  
Mobile: 07968197613 Office: 01303 230787  
Email: [cedarhm@hotmail.co.uk](mailto:cedarhm@hotmail.co.uk)  
[www.cedarhomemaintenance.co.uk](http://www.cedarhomemaintenance.co.uk)

## Air Link Cars

(You pack up, We pick up)



**Airport, Seaport and Long Distance  
Travel Specialist**

The family run business  
where service really counts.  
Estate cars and people carriers.  
Fixed price 24 hrs a day. No extras.  
Written confirmation of booking.

**Established 10 years.**

**For the Easy Airport Link, Think Air Link!**  
**01303 670370 / 07766824474**  
**[airlinkcars@yahoo.com](mailto:airlinkcars@yahoo.com)**



CARPET CO.

- + Carpets Supplied and Fitted
- + Carpets Professionally Cleaned
- + Carpets Whip Edged and Cotton Bound

Domestic and commercial carpet specialists

**If it's to do with carpets ... get in touch**

07943 764442  
Email: [kingdom.carpet.co@gmail.com](mailto:kingdom.carpet.co@gmail.com)  
[www.kingdomcarpetco.co.uk](http://www.kingdomcarpetco.co.uk)

## Need a Van? Then I'm your Man!

**For all light removals, furniture, domestic  
items including house clearances**

- Avoid expensive deposits, pick-ups and drop-offs
- Remove, dispose of or recycle all household items, including electrical appliances
- Based in Barham
- Reasonable and fair rates
- Free estimates and quotations



**Call Christian on 07771 728080**  
**Email [christianmanandvan@gmail.com](mailto:christianmanandvan@gmail.com)**

## ANDY MANNERING FLOORING

SPECIALISING IN AMTICO AND KARNDUAN  
LUXURY VINYL TILES

Also Safety Flooring, Rubber Flooring etc  
Commercial and Domestic Work Undertaken  
No Job Too Small

Free Estimates and Advice Given  
Over 35 years experience  
Fully Insured

Telephone: 0797 434 7248 or 01303 863095  
[info@andymanneringflooring.com](mailto:info@andymanneringflooring.com)

Please visit my website for further information and to view  
my Feedback  
[www.andymanneringflooring.com](http://www.andymanneringflooring.com)

## SARAH de ROUGEMONT

### UPHOLSTERY

*Established 1990*

Loose Covers - Fabrics -

Roman Blinds

*All commissions considered*

**Tel: 01227 455841**

**Mob: 07973 377817**



*Established 1988*

## DOMESTIC CLEANING SERVICES LTD

Regular or One-off Cleaning

Homes and Holiday Lets

End of Tenancy

Moving Cleans

Spring Cleans

**Professional, Friendly, Reliable Service**

**CALL US NOW FOR A FREE QUOTATION**

**Tel: 01227 277033 | [www.supermaids.co.uk](http://www.supermaids.co.uk)**  
**[info@supermaids.co.uk](mailto:info@supermaids.co.uk)**



**City&Guilds**  
Qualified

**PART P**  
Electrical Safety

**[www.sunhouse-electrical.com](http://www.sunhouse-electrical.com)**



*Ewins Electrical*

M- 07891103065 E- [info@ewinselectrical.co.uk](mailto:info@ewinselectrical.co.uk)  
W- [www.ewinselectrical.co.uk](http://www.ewinselectrical.co.uk)

Call Simon for any electrical maintenance,  
refurbishments or upgrades.



**If you wish to  
advertise here, the  
cost is £53 per annum.**

**Please contact  
[elhamnewsletter@gmail.com](mailto:elhamnewsletter@gmail.com)**



## Design – Install – Maintain

Website: [acrise-electrical.co.uk](http://acrise-electrical.co.uk)

Domestic, commercial, industrial & agricultural electricians  
serving the Elham Valley and surrounding areas.

**Acrise Electrical Services undertake every type of electrical work to a very high standard, drawing on many years in the industry. We are very professional and highly qualified.**

Periodic Testing – New Installations – Additional  
Circuits, Sockets, Lights Etc – Intruder Alarms - Rewires  
Fuse Board/Consumer Unit Replacements  
Fire Alarms, Smoke Detectors & Carbon Monoxide  
Detectors – Fault Finding

**We are fully insured, certificates and warranty are issued for all our work**



# Helping people live safer, more enjoyable lives

## Your local electrical and smart home contractor



## Electrician



## Smart Home & WIFI



## Security Systems



## EV Charging

**Looking for a local electrical and smart home contractor you can trust?**

**“Nathan has been super helpful in troubleshooting a couple of problems in our home. If you're looking for an electrician whose professionalism matches the quality of his work don't hesitate to give him a call!**

- Five star service and reviews. NICEIC domestic installer with full insurance.
- Family owned & operated, local company, no call out fee.
- Contact us today for a free electrical safety inspection.

**Mob: 07971 857475**

help@inspiredsmartliving.com  
www.inspiredsmartliving.com





NACS Registered **P J Sweeps**  
 HETAS Qualified Phillip Joiner  
 Fully Insured Chimney Engineer  
 Chimney Lining Over 10 Years' Experience  
 Pots & Cows  
 Fireplaces Fitted  
 Stoves Installed & Serviced





01227 700 909 pjsweeps@hotmail.co.uk

**DILTON**  
**MINI SKIP HIRE**  
 2, 3 & 4yr SKIPS AVAILABLE  
 BALLAST, hardcore, SAND  
 TOPSOIL SUPPLIED  
 REGISTERED WASTE CARRIER  
**07799 433754**  
**01303 812448**

**RALPH ALLARD**  
**CHIMNEY SWEEP**

Brush and Vacuum  
 All Chimneys, Boilers and Stoves Swept  
 Woodburning Stoves and Fireplaces Fitted,  
 Chimneys Lined  
 Certificates Issued  
 HETAS and NACS Registered, Fully Insured  
 Member of the  
 National Association of Chimney Sweeps  
 Tel: 01303 844465 - Mob: 07813 716654

**CEDAR TREE CARE** City & Guilds NPTC  
 All types of tree work undertaken  
 Crown lifting, crown reductions,  
 dismantling and removals, hedge maintenance,  
 pollarding, stump grinding and removal, mobile saw milling,  
 wood land maintenance, all year round seasoned logs available  
 Fully insured and NPTC qualified with over 15 years experience  
 Call Tom: 07769 908027 email: linchlogs@gmail.com



**Wraight's**

**Tree Services - Grounds Maintenance - Stump Removal**



- \* All Types of Tree Surgery
- \* Hedge Cutting
- \* Tree Stump Removal
- \* Mowing, Strimming & Clearance

Full Public Liability Insurance

Tel: 01303 840254  
 E-mail: ben@wraights.co.uk

Mob: 07814 379639  
 Web: www.wraights.com

City & Guilds  
 NPTC  
 Qualified

**Bossingham Groundworks  
 and Landscaping**

Excavation  
 Site Clearance  
 Demolition  
 Brickwork  
 Turfing



Stables  
 Fencing  
 Drainage  
 Concreting  
 Driveways and  
 Patios

**Mob 07894 007660**

**T. Metcalfe Fencing Contractors**

Approved Expert Installer for Jacksons Fencing  
 Established over 30 years  
 Fully insured - Highly experienced teams



Panel fencing, gates, decking, pergolas, post & rail,  
 stock fencing, security, landscaping & tree surgery.

**07790 290155**

metcalfefencing@btinternet.com  
 Proprietor - Derek Burr,  
 Ash Ridge House, Elham



**Jacksons**  
 Quality that lasts  
 Fine fencing, Gates & More  
 EXPERT  
 INSTALLER



# East Kent Works

Traditional And Modern Building Maintenance / Repair / Restoration

Sash Windows    Brickwork    Steelwork

Etc, Etc, Etc

Sensible rates and attention to detail assured.

Call Rob on 07525 330877 or email: [eastkentworks@yahoo.com](mailto:eastkentworks@yahoo.com)

## **ELHAM VALLEY STORES**

We are looking for more  
volunteers to work, on an  
occasional basis,  
in the Village Store.

Full training will be given.

Please contact Martin Turner (01303 840804

or [jgt867@aol.com](mailto:jgt867@aol.com))

if you would be interested  
have any questions.

## **HARMER and SON LTD**

**Ground Maintenance Ltd**

Grounds maintenance,  
turfing, fencing

**FREE ESTIMATES**

Tel: 01303 893414 or



**07831394372**



# D. KIRBY ROOFING & BUILDING



**FIND A SAFE,  
LOCAL TRADER**

The Only Traders Vetted By Kent  
Trading Standards



**TRADING  
STANDARDS  
CHECKED**

Trader IDK0935

**All Roofing Work - Fibreglass & Felt Flat Roofing • Chimney Building & Repairs**

**New Roofs • Alterations • Insulated Conservatory Conversions**

**General Building • 30 Years Experience Reliable Local Roofer**



See our Google Reviews



Find us on Yell.com

**Tel: 01303 892705    Mob: 07916 273886**

**E: [roofersfolkestone@gmail.com](mailto:roofersfolkestone@gmail.com)    [www.roofers-folkestone.co.uk](http://www.roofers-folkestone.co.uk)**



# Explore, discover and grow at Elham Pre-School

Proud to be the most spacious pre-school in the surrounding area, we provide a safe, fun and stimulating environment in which children have the freedom to play, learn and socialise. Our 2015 Ofsted report referred to Elham Pre-School's "good quality care" and stated that "parents are extremely happy with the service provided".

- A large, spacious hall with modern and well-maintained facilities;
- Extensive outdoor space for children to explore and enjoy clean, fresh air and beautiful countryside;
- Excellent equipment, with a wide variety of toys and stimulating activities, all rotated daily;
- Caring, nurturing and highly qualified staff, all of whom are parents themselves;
- Consistently good OFSTED reports;
- Very competitive rates.

**SPACES AVAILABLE NOW!**

**www.elhampreschool.co.uk**

Email: [elhampreschool@gmail.com](mailto:elhampreschool@gmail.com) Tel: 01303 840041  
Elham Pre-School Elham Village Hall High Street Elham Kent CT4 6SX  
Registered charity number 1125226 Registered company number 6630170



**ROBERT KENT** Cert.f.p  
**FUNERAL DIRECTOR**

**In such difficult times, when you need support.  
We offer a simple solution.**

We are offering a different type of funeral service. Unlike other funeral directors and comparison websites we include all the fees. The Price stated is the amount you will pay to cover the cost of the entire funeral.

**Direct  
Cremation  
£999**

**Fair Priced  
Cremation  
£1950**

**Traditional  
Funeral  
£2595**

**Hythe 01303 684062**

**ALL AREAS COVERED**

**RKFUNERALS.COM**

Based in Etchinghill, I provide a personalised service with a one-off flat fee of £180.00 to prepare and submit your Tax Return.



**No hidden costs. FMAAT Licensed Accountant,**

**fully insured and HMRC authorised.**

**Ring Anita on 07361 238744 or email  
[aabookkeepingservicesaadams@gmail.com](mailto:aabookkeepingservicesaadams@gmail.com)**

## Jeff's Computer Services for all your computer needs

**£25 per hour**

**Fifteen years experience**

**Based in Elham**

Services include:

Phones, TVs, Tablets, Laptops and PC set up. Data & Virus services. Hardware & Software upgrades. PC and Laptop repair. Cyber security. General and technical advice. Small group and individual tuition.

**Friendly & local service  
Contact Jeff Martin BSc (Hons) MBSC  
on:**

**01303 840838/07761 299895 or  
[jeff@jeffmartin.co.uk](mailto:jeff@jeffmartin.co.uk)**

**For website building and hosting visit  
[www.jeffmartin.co.uk](http://www.jeffmartin.co.uk)**

## East Kent Mole Catcher No Mole – No Fee



**Your local mole catcher, based in Ash,  
covering all local towns and villages.**

**Offering mole control for your lawns,  
gardens and paddocks. Public liability  
insurance.**

**Call/Text – Keith, East Kent Mole  
Catcher 07876 686543**

**Email – [molecatcherkeith@hotmail.com](mailto:molecatcherkeith@hotmail.com)  
[www.eastkentmolecatcher.co.uk](http://www.eastkentmolecatcher.co.uk)**

## Young's Accountancy Services

**Accountancy, Audit, Book-keeping, Payroll and VAT  
Services.**

**For all businesses, partnerships and sole traders.  
Free initial consultation, flexible hours.**

**Contact details:**

**Mob: 07704 518251**

**Tel: 01303 259734**

**[contactyoungstoday@gmail.com](mailto:contactyoungstoday@gmail.com)**



**The  
Canterbury  
Auction  
Galleries**

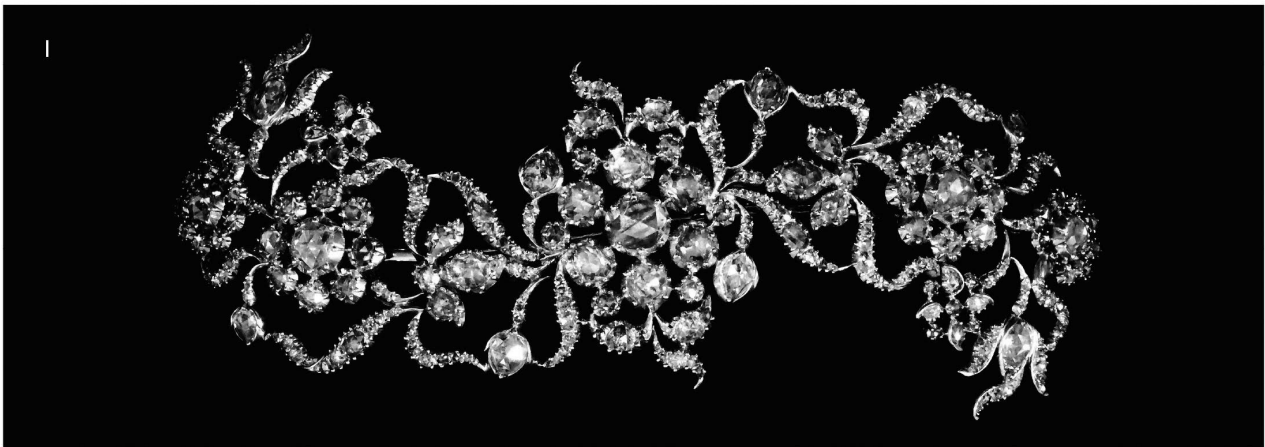
FINE ART  
AUCTIONEERS  
SINCE 1911

40 Station Road West  
Canterbury  
Kent CT2 8AN

t 01227 763337  
e [general@tcag.co.uk](mailto:general@tcag.co.uk)

## We Are Actively Seeking Consignments

of Fine Art & Antiques, Silver & Jewellery, Objet d'Art, Coins & Medals  
Clocks, Antique Furniture and Toys.



**Call Us** to Book a Valuation Appointment at Home or at Our Saleroom in Canterbury. All Appointments are subject to current social distancing guidelines.

Insurance and Probate Valuation Services Available on Request.

### **Weekend Online Auction Dates 2022**

9th & 10th April, 11th & 12th June, 6th & 7th August

1st & 2nd October, 3rd & 4th December

1. Late Victorian all diamond set hairpiece (approximate diamond weight 20ct)  
Sold for **£17,400**
2. Solitaire diamond ring (4.91 ct)  
Sold for **£24,000**
3. 1970's Rolex "Submariner" Chronometer (Model No. 1680/0)  
Sold for **£14,000**

**[thecanterburyauctiongalleries.com](http://thecanterburyauctiongalleries.com)**



# Your Local Pharmacy

- NHS & Private Prescriptions
- Travel and Speciality Vaccination Clinic
- Weight Loss Clinic
- FREE Delivery Available
- Private Prescriber Available
- Emergency Medication Supply
- NHS Flu & Covid Vaccinations
- Free Blood Pressure Checks
- Pharmacy First Service
- ONE YOU Stop Smoking Provider



*Lyminge  
Pharmacy*

Delivering prescriptions to the local community of Lyminge, Elham, Etchinghill, Postling, Hythe, Rhodes Minnis, Stelling Minnis and the surrounding areas

Ask a member of staff to learn more

Contact us at

Tel: 01303 862425

Email: [lymingeinfomed@gmail.com](mailto:lymingeinfomed@gmail.com)

Or come in to the store:  
21 Station Rd, Lyminge, Folkestone  
CT18 8HQ



**Laing  
Bennett**  
Independent estate & letting agents

**With our excellent local knowledge & experienced staff we will get you moving**

- ✓ **Free** professional photography, property floorplan, Rightmove premium listing & social media advertising

**01303 863393**

The Estate Office,  
8 Station Road,  
Lyminge,  
Kent CT18 8HP

Follow us on  
social media



[www.laingbennett.co.uk](http://www.laingbennett.co.uk)

WILLS

TRUSTS

POWER OF  
ATTORNEY

PROBATE

*squiggle*

Death isn't something most of us want to talk about or think about. And why would we? But what we DO want is for our loved ones to be looked after when we're gone.

And yet, nearly half of us don't have a will or even a plan for our estate when we die. It's something many just don't get round to - despite knowing that we should.

Book your free consultation with Squiggle today.

01233 659796

[www.squiggleconsult.co.uk](http://www.squiggleconsult.co.uk)

Squiggle Consult Ltd | 11 Park Barn, Evegate Business Park, Mersham, TN25 6SX | Registered Company - 10816512



UAFA PRESENTS

# Village Life

It's Judgement Day



A UAFA PRODUCTION  
STARRING MARY DE SAUSMAREZ, SARA STRAIN, TREVOR GASSON, NATALIE HUBBARD  
WITH CONNOR HAYWOOD, DAVID HUGHES, CHRIS BIDDLE, NATALIE CORNISH  
& TARA WOODLEY, JENNY GASSON, THOMAS ARNOLD  
SCRIPT BY JAN WEBLEY & LIZZIE WESTRAY MUSIC BY PAUL WELLER ASSISTANT DIRECTOR CONNOR PICKETT  
DIRECTOR OF PHOTOGRAPHY STEPHEN SOUTHOUSE DIRECTOR & PRODUCER NIGEL WOODLEY



BLOCK 3: RUNNER UP



**This award-winning film is to be shown in September.**

**It is a**

**FREE EVENT**

**at Elham Village Hall,**

**Saturday 6 September.**

**BBQ available and Pay Bar  
from 17.30**